

# EARTHWORLD



# MANIFESTO

In pursuit of beauty ... a single brush stroke should suffice.  
a building should be simple; yet provocative and dynamic.

...a building should be an emotional experience  
...move you  
...technology and program guide the process  
...a building defines the inhabitant's relationship to the world itself...  
the way it's entered...  
an existential reference...

space should embrace technology, culture, style,  
nature and context

space should...  
...pay homage to the site,  
...have respect for function,  
...embrace the natural and humanmade order,  
...be harmonious with nature and climate  
...pay service to aesthetic values...

Proportion, Light, Shade, Mood, Texture, Atmosphere



# SOPHIA GRAY MEMORIAL LECTURE & EXHIBITION

In the Making of Meaningful Things  
André Eksteen & Braam de Villiers  
earthworld architects



fourth revolution

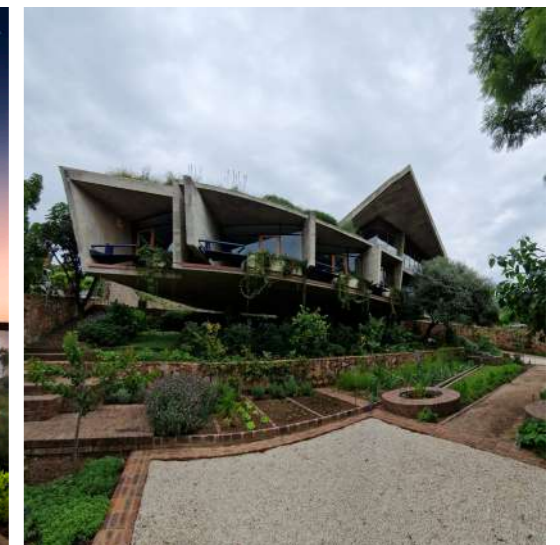
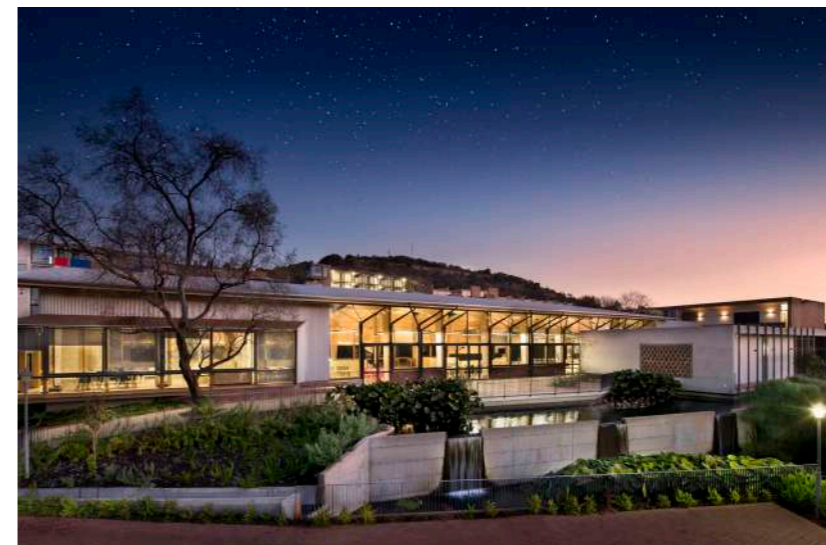
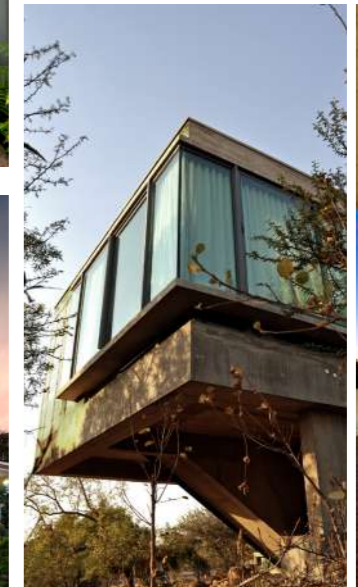


# SOPHIA GRAY MEMORIAL LECTURE & EXHIBITION

35th Recipient  
22 August 2024



Inspiring excellence, transforming lives  
through quality, impact, and care.



## **PUBLIC**

FUTURE AFRICA HUB  
FUTURE AFRICA CONFERENCE CENTER  
FUTURE AFRICA HOUSING UNITS  
FUTURE AFRICA RESEARCH COMMONS  
BELGIUM EMBASSY  
ROYAL THAI EMBASSY

**06**

## **COMMERCIAL**

I-CAT OFFICES  
TRIBECA ORIGINAL  
TRIBECA STANDARD  
TRIBECA MALL OF AFRICA  
TRIBECA FACTORY TRADE MODEL 12  
NANDO'S CASTLE GATE  
NANDO'S SAVANNAH MALL  
NANDO'S QUEENSTOWN  
NANDO'S TUBATSE CROSSING  
NANDO'S HILLCREST  
NANDO'S COMARO CROSSING  
LUCKY BREAD MALL OF AFRICA  
LUCKY BREAD BROOKLYN  
LUCKY BREAD MIDSTREAM  
LUCKY BREAD MENLYN MAINE  
LUCKY BREAD CASTLE GATE  
LUCKY BREAD VILLAGE  
TRAILWOLF  
SKUKUZA SAFARI LODGE  
PLYWOOD OFFICE  
INOAR  
CAPITAL RADIOLOGY LIFE GROENKLOOF

**28**

## **RESIDENTIAL**

WATERFALL HOUSE 1  
HIGHVELD HOUSE  
20TH CENTURY MODERNIST PRESERVATION  
FLOATING CONCRETE ROOF  
THAI RESIDENCE

**72**

## **PUBLICATIONS**

MAGAZINES, NEWSPAPERS, ARTICLES AND BOOKS

**88**

## **RECOGNITION**

AWARDS  
THE TEAM

**92**

The brief called for the design of an environment that would facilitate and enhance transdisciplinary research within the African context. The facility should be a place where collective research is done with a strong focus on science leadership development. The Hub is a space where the whole campus can congregate, eat, and share ideas.

A complete plywood structural portal system - designed in detail and modeled three-dimensionally in the architect's offices, and then sent to CNC (Computer Numerical Control) Machines for cutting and manufacturing of site components, and then rapidly assembled on-site.

Future Africa is to provide an integrated live-work environment for postdoctoral students from all cultures and backgrounds, fostering fellowship, understanding, and collaboration among the vast diversity of cultures and disciplines on our continent.

The facility consists of 280 one, two, and three-bedroom living units with four communal living and cooking areas and a creche. Additionally, it includes a Central Hall (Future Africa Hub), a Research Commons, and a Conference Facility (250-seater auditorium with two 50-seater multi-purpose rooms and six break-away rooms, all linked to the auditorium and doubling up as translation booths).

The environment resulting from the development must foster community, ownership, participation, and thought integration through spatial transparency, democracy, and choice. The conventional approach at universities calls for clusters of buildings with some shared facilities central to the residential units, which still creates islands and isolation. The reimagining of this typology called for centralized spaces for interaction, which would facilitate collaboration, cultural interaction, and friendship. Central to the collaboration/communal facilities are food and its preparation. With the vast cultural diversity on our continent, the idea of sharing thoughts around "dinner tables" was at the core of the organization. The landscape design also formed part of the system by reintroducing 56 orphan crops and allowing foraging to explore alternative cuisines and creative interaction around new tastes, textures, and colours.

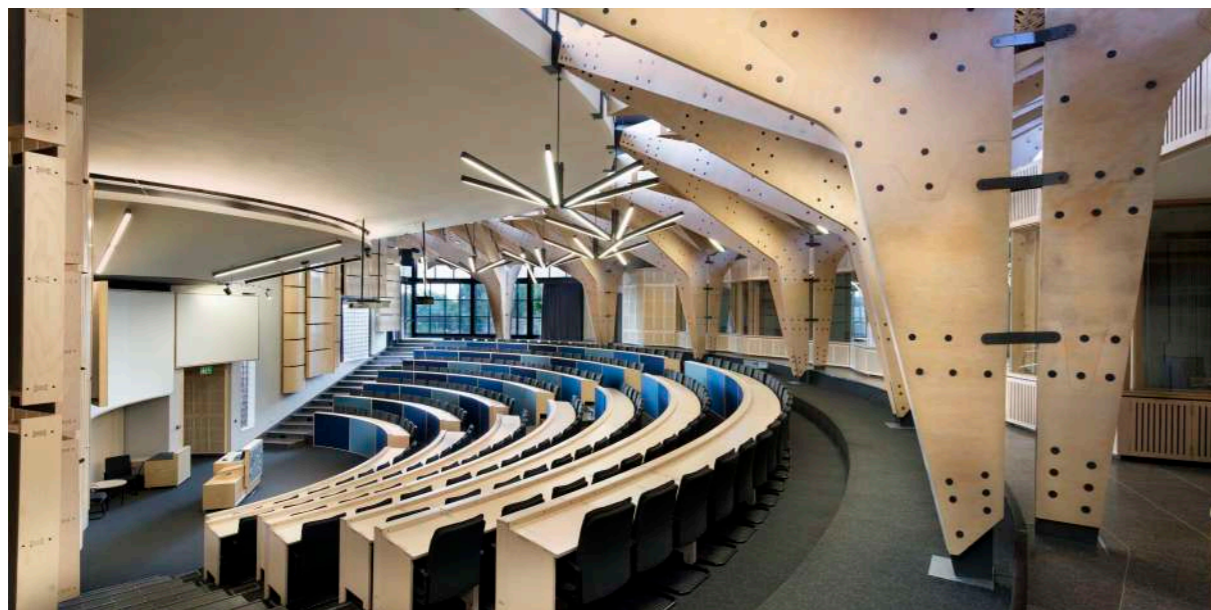
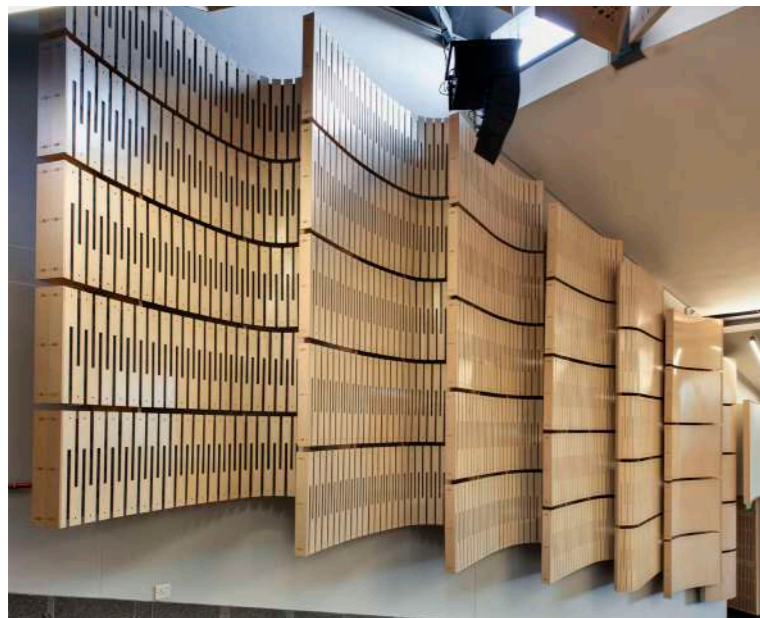
---

# FUTURE AFRICA HUB

PRETORIA







The Future Africa Conference Facility consists of a 250-seater auditorium, two 50-seater multi-purpose rooms, and six break-away rooms linked to the auditorium, also doubling up as translation booths. A complete plywood portal structural system was designed in detail and modeled three-dimensionally in the architect's offices. It was then sent to CNC (computer numerical control) machines for cutting and manufacturing on-site components, which were rapidly assembled on site. The extensive use of timber in the entire building was an imperative sustainable strategy.



# FUTURE AFRICA CONFERENCE CENTER

PRETORIA  
Earthworld



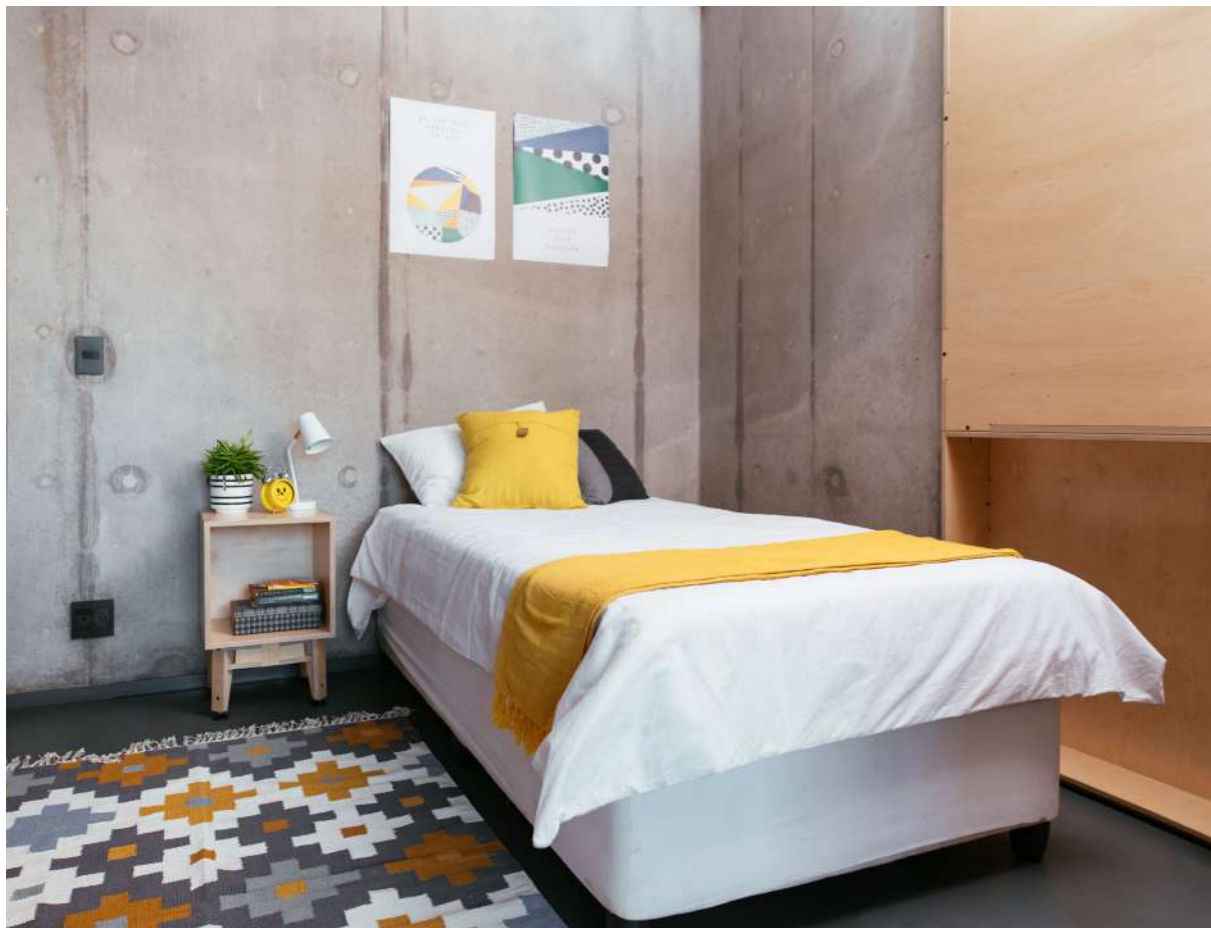
# FUTURE AFRICA HOUSING UNITS

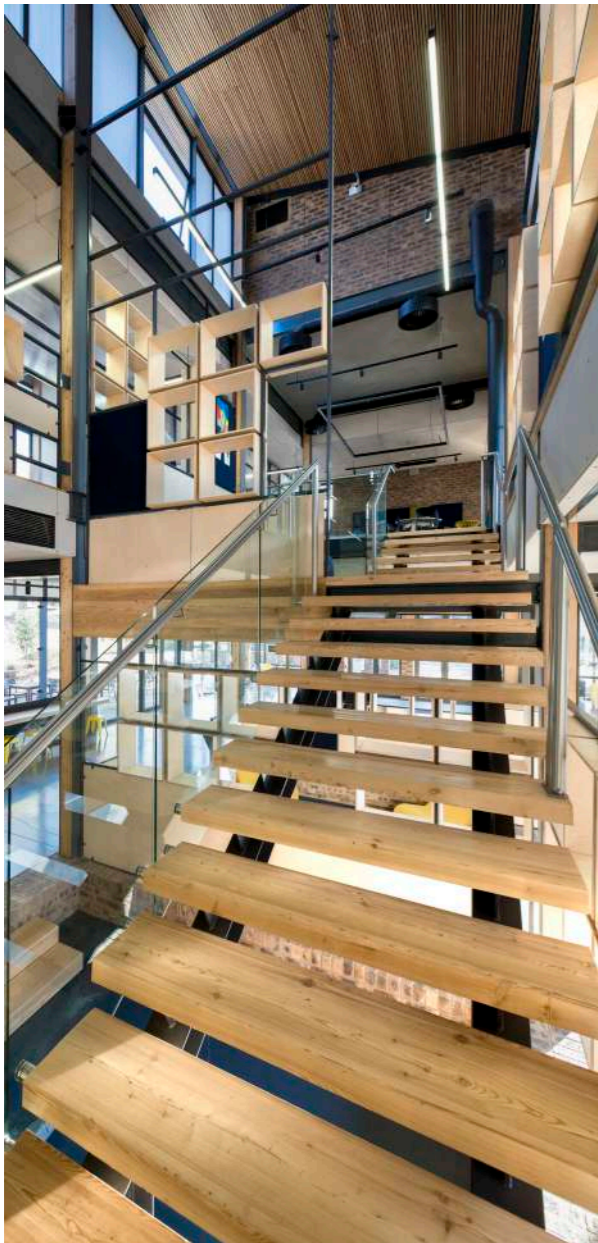
PRETORIA

Spatial organization went against the norm for hostel/communal living environments, where isolated blocks with either 8 or 16 rooms are organized alongside small kitchen and living areas. Although the living units are comfortable and allow for private contemplative activity, the circulation is through the communal living areas, which also house communal kitchens.

The housing complex consists of 280 one, two, and three-bedroom living units. The electronic models were shared with the precast manufacturer. Precast concrete elements were manufactured 11 km off-site and then brought to the site for on-site assembly with cranes.

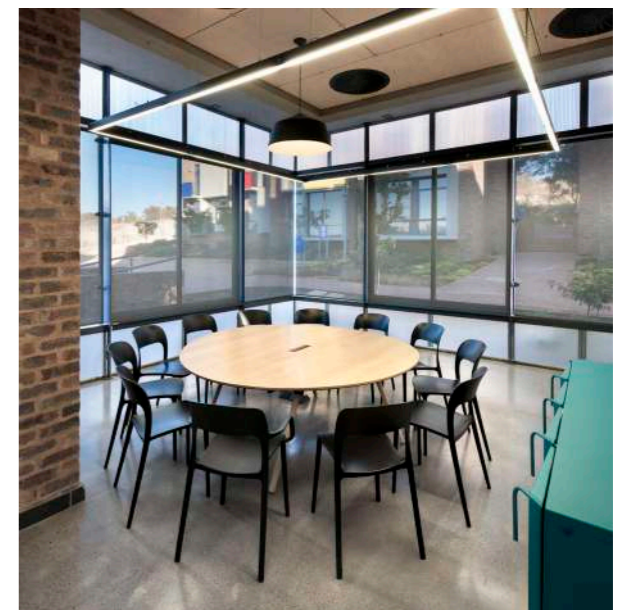
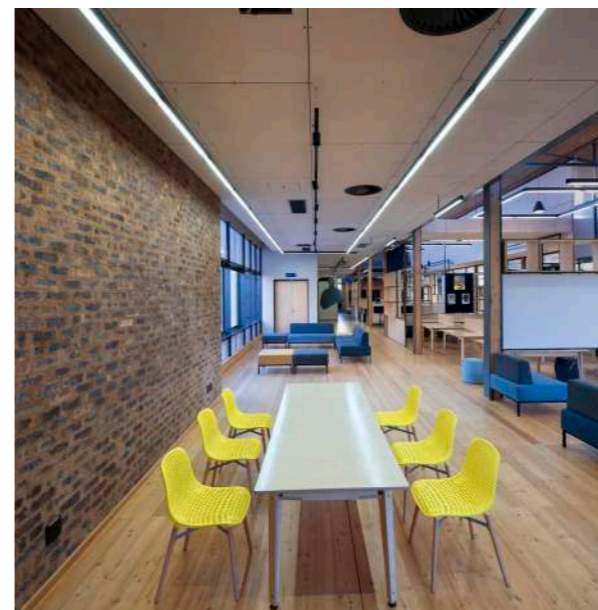






FUTURE AFRICA  
RESEARCH  
COMMONS

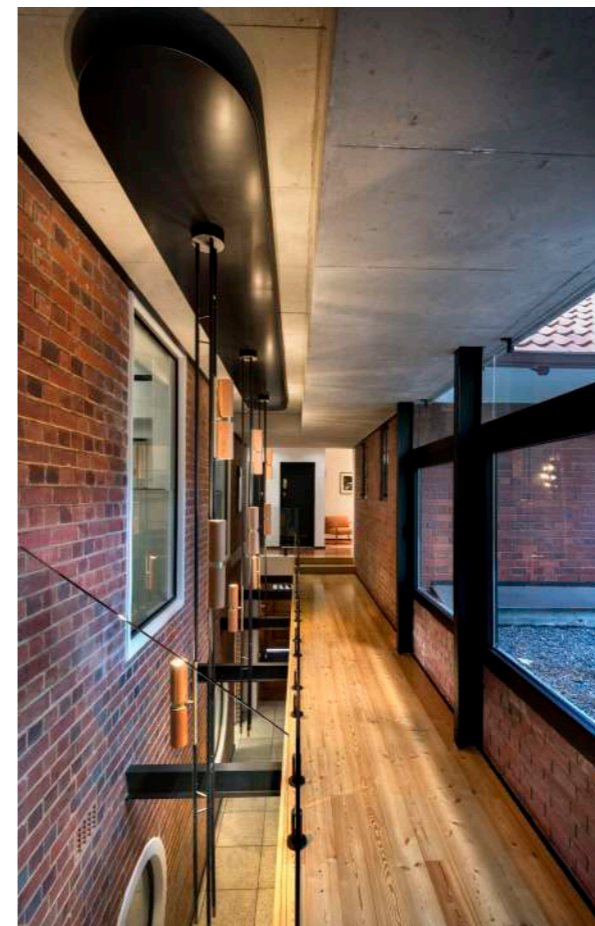
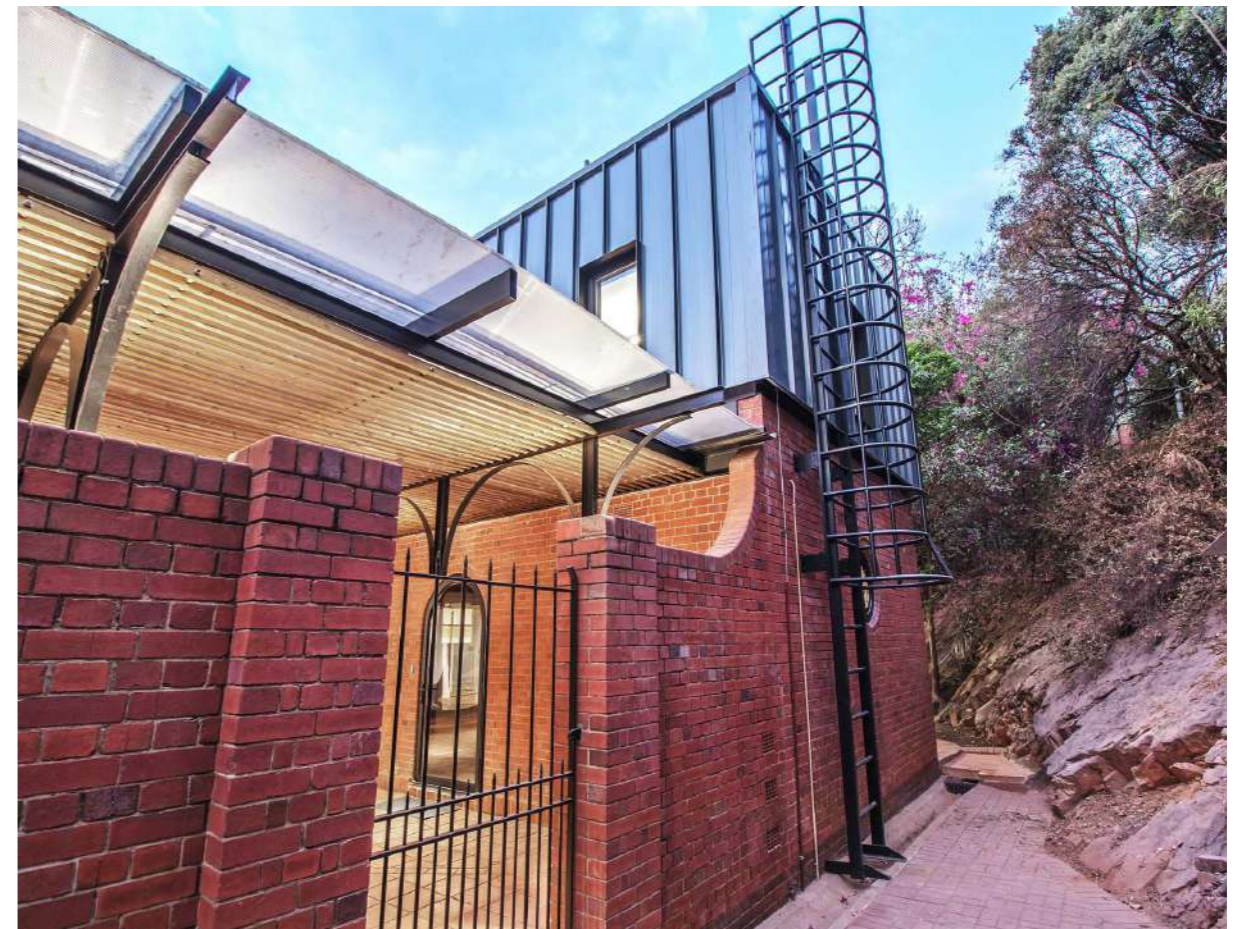
PRETORIA

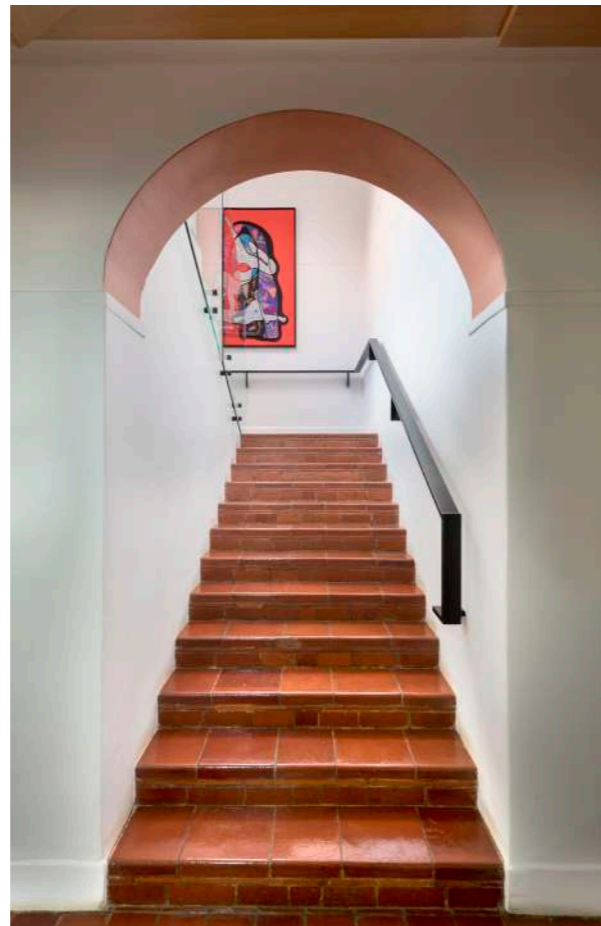


MUCKLENEUK

# BELGIUM EMBASSY

This restoration of the historical, John Kirkness – old mayor of Pretoria’s, house called for specific and careful intervention. Requiring heavy security, new IT infrastructure, efficient climate control and contemporary working spaces – all while remaining sensitive to the historical house. The ornamental ironmongery was kept in fact and restored. Significantly, the Kirkness bricks had careful consideration preserve the beauty of the brickwork. Where existing walls were removed a clear indication on the floor was made with hand-made tiles to indicate their original position.



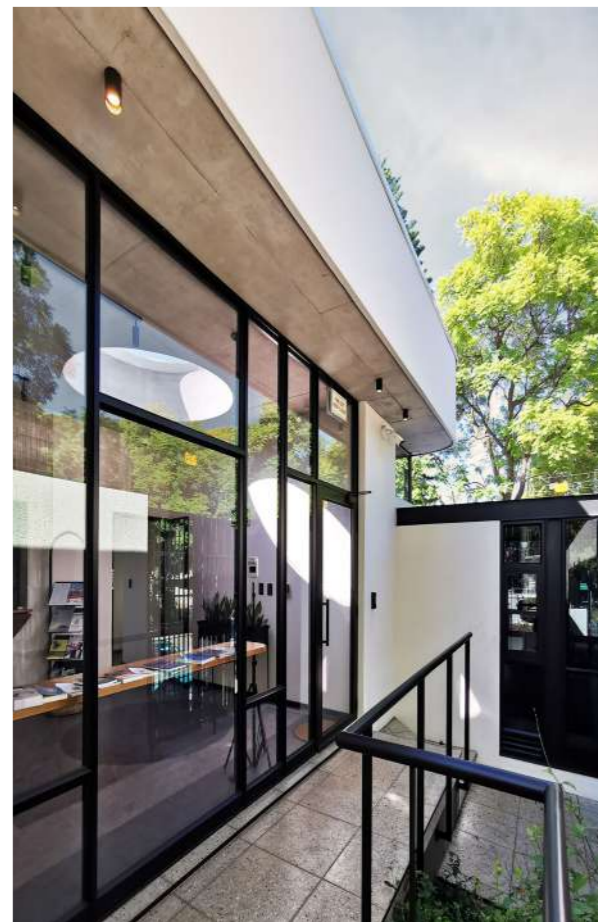


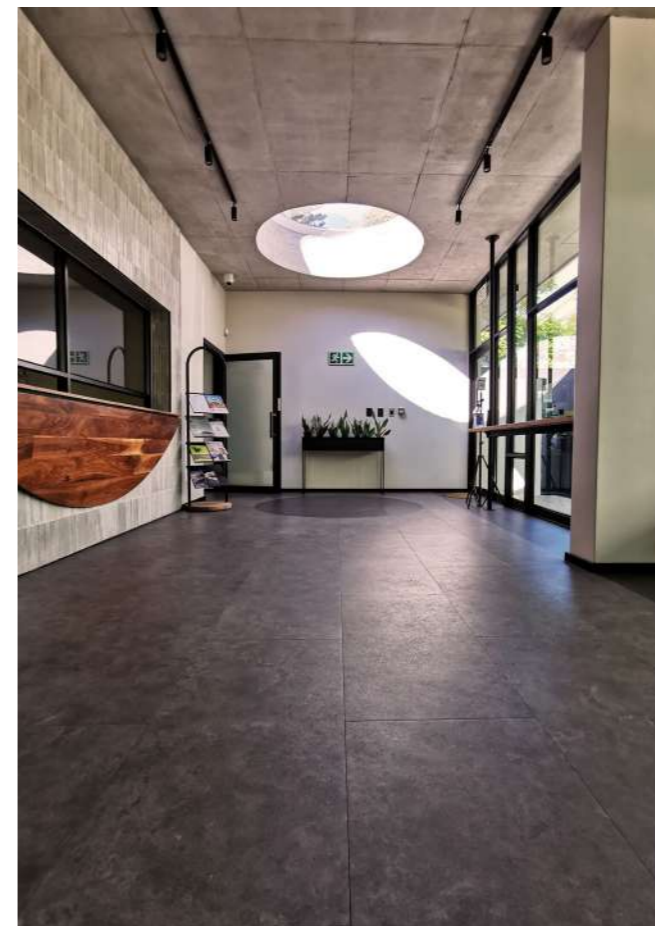
PRETORIA

## ROYAL THAI EMBASSY

The aristocratic dwelling was built at the beginning of the 20th century. The original features include a grand timber staircase, numerous ornate fireplaces, built-in classical joinery, and a grand room with exposed detailed trusses. The design approach was to peel back the layers of add-ons and identify, preserve, and restore precious heritage fabric, such as fireplaces, brass ironmongery, picture rails, doors, louvers, joinery, and timber floors. The new addition's aesthetic is distinctively modern, showcasing the juxtaposition between the new and the old.

The main objective was to modernize the entire building from an energy-efficiency and building-services perspective, introducing and upgrading artificial lighting, mechanical ventilation, and IT infrastructure. A custom timber tree pergola was added to the existing main courtyard, allowing for additional public space that can be used year-round. We closely collaborated with the clients, incorporating symbolic Thai patterns onto the hanging panels to create a sense of ownership for the building's current inhabitants. The project's end result is a sensitive fusion of opposites: a marriage between old and new, between an old home and a contemporary office, becoming a flagship representation of what a 21st-century embassy in South Africa should embody.







PRETORIA EAST

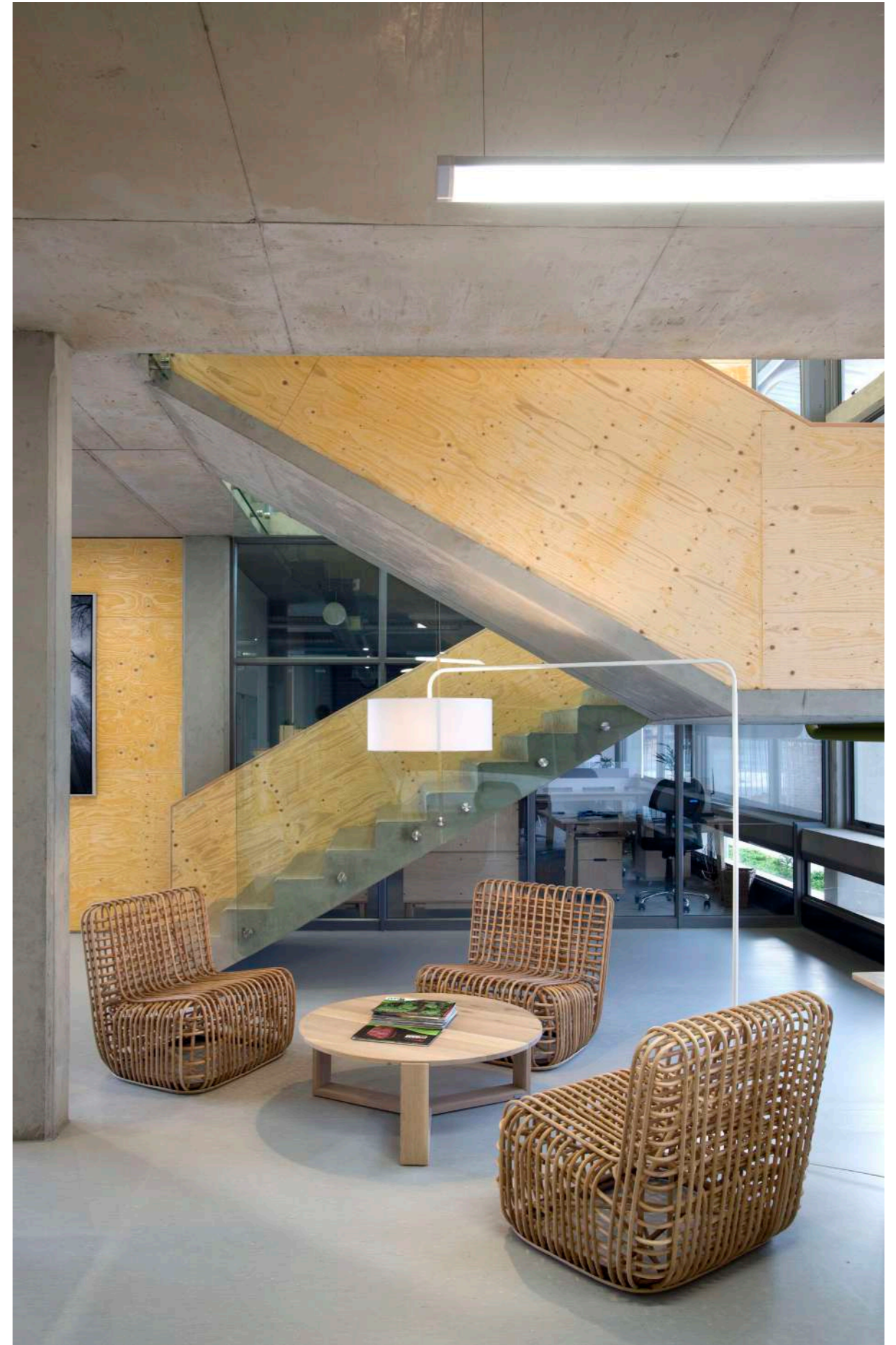
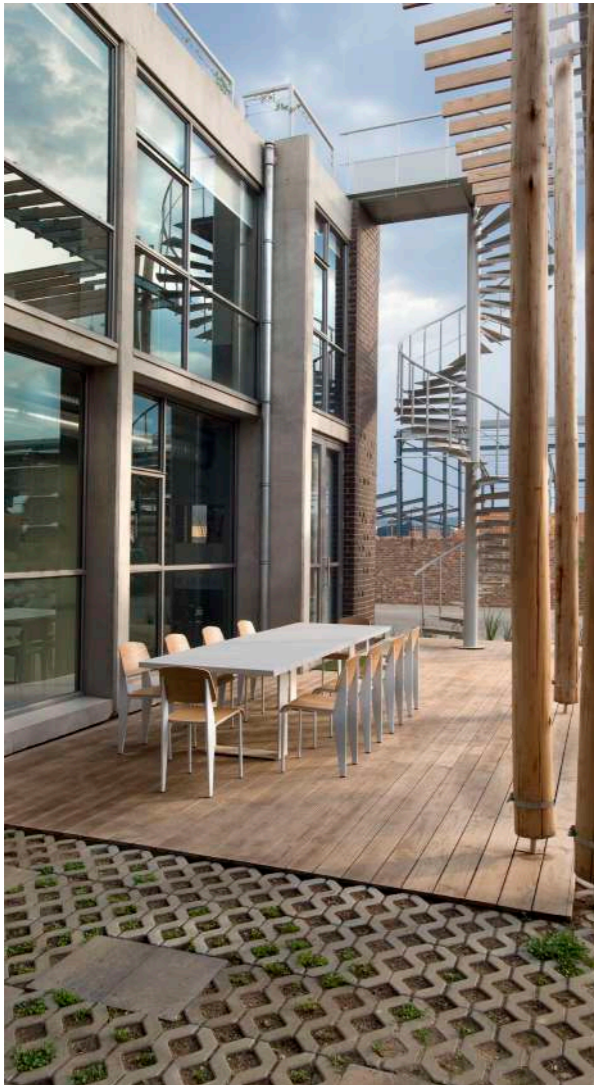
## I-CAT OFFICES

---

In essence, a building should be sustainable on all three levels: ecological, social, and economic. The brief from the client required a building that could showcase sustainability concepts - the values that I-Cat embraces. The design of I-CAT's new offices and warehouse aims to perform on all these levels of sustainability. Passive design systems such as orientation, shading, natural ventilation, and lighting were carefully considered to create a strong foundation for the building's sustainability. These systems ensure a broader comfort zone for users. The building's envelope is oriented directly to the north, and a courtyard was created on the southern side to further moderate the climate during summer. The northern overhang allows for winter heat gain and summer shading, while the southern facade permits ample natural light.

A grid-tied photovoltaic system was designed to meet the day-to-day energy demands of the building. Rainwater from the roofs is collected and stored in a large underground water tank buried in the courtyard. All water is pumped from the tanks to a water filtration plant located in the warehouse. The design attempts to minimize building maintenance, and natural materials were prioritized. A monolithic face brick wall creates a bold street facade that is broken up with a punched steel window frame, further enhanced by special bricks that form an integrated pattern in the brick facade.

A horizontal concrete box frames the glazing on the northern facade, serving as a light shelf, and also protrudes inward to act as desk shelving. A timber pole and thermo-treated pine pergola structure float above the southern courtyard, which is planted with grass blocks and low water-usage plants, and further enriched with timber decks and a linear koi pond. The fever trees planted in the courtyard will eventually grow through the pergola structure. A spiral staircase extends from here to the roof garden, providing an aerial overview of the pergola and courtyard.

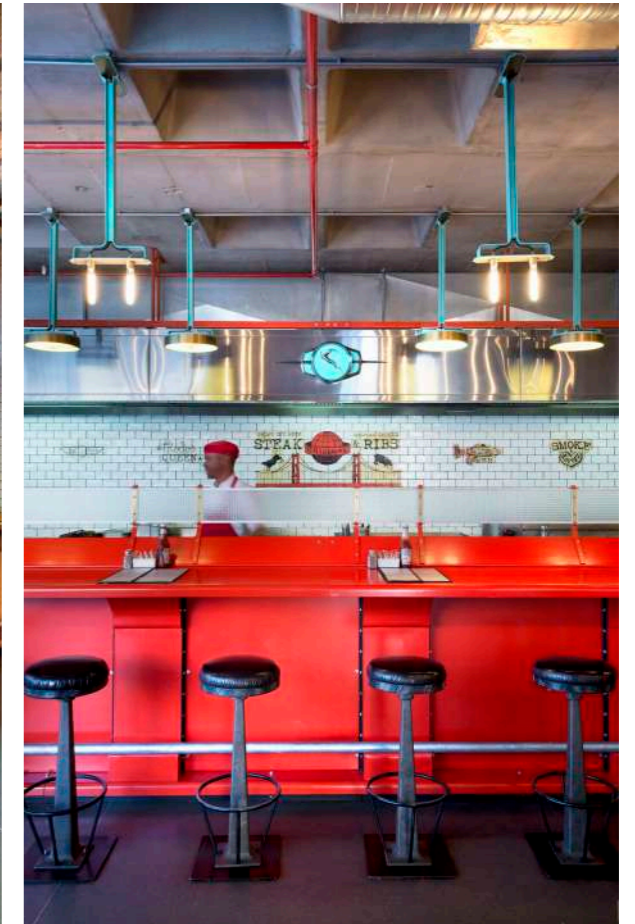




# TRIBECA ORIGINAL

BROOKLYN

In an increasingly digital world, authenticity holds great significance. The desire for handmade, personalized artisan products over mass-produced goods is growing, reflecting a preference for simplicity and genuine experiences. TriBeCa Restaurant's design philosophy embraces this trend. The restaurant's layout, reminiscent of classic American diners, fosters a close connection between chefs and diners, emphasizing the passion and care behind each dish and drink. A welcoming threshold leads patrons from an outdoor area to the inviting, warm core of the restaurant, characterized by wood and steel elements.





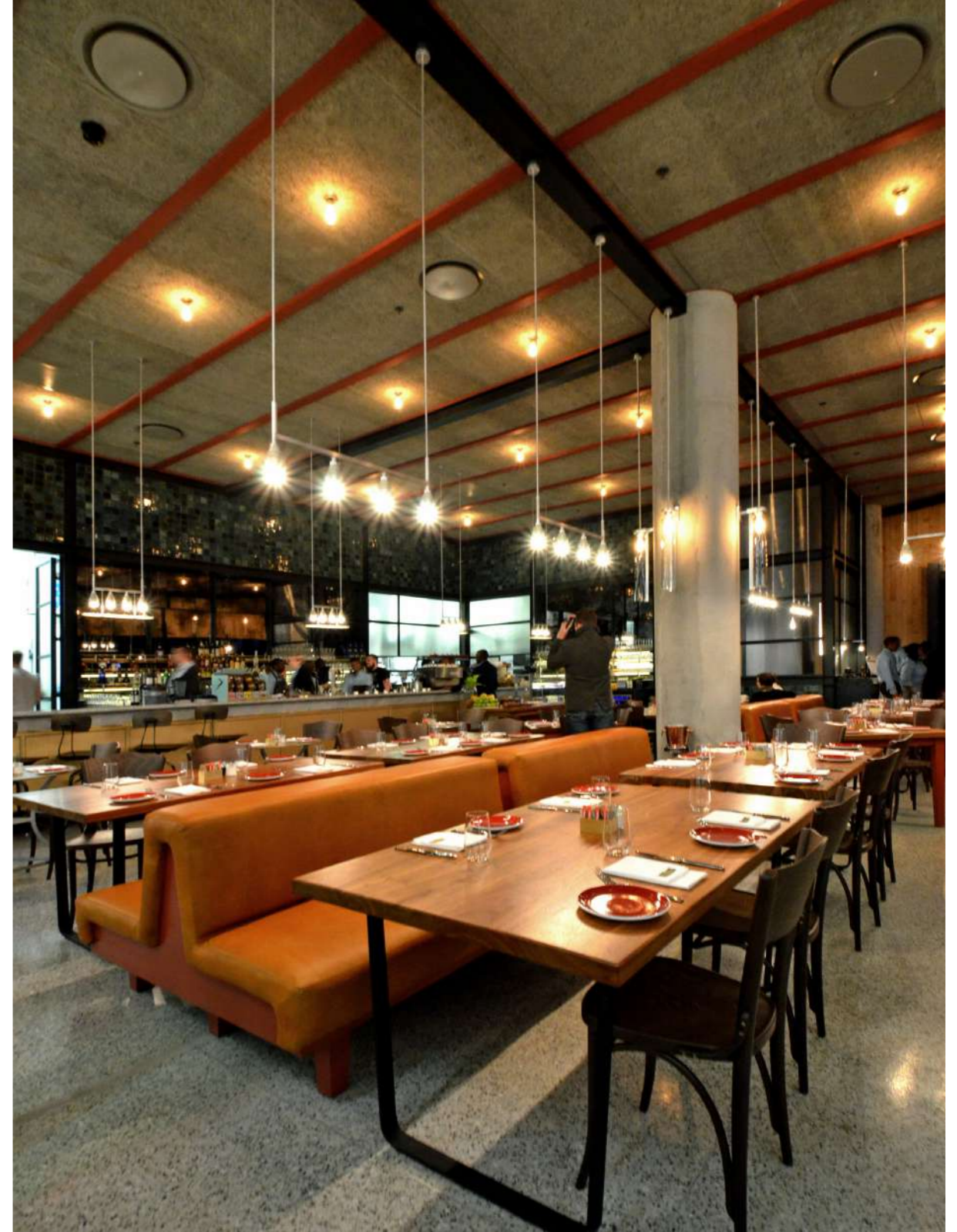
## TRIBECA STANDARD

LYNNWOOD BRIDGE

34

Design inspiration has been drawn from the experience of walking down the streets of New York. Upon entering the space, one finds a steel structure adorned with an amalgamation of materials and furniture pieces that convey both comfort and charm simultaneously. The selection of interesting and tactile materials mirrors Tribeca's menu, which presents an array of flavors, tastes, and textures. The notion of authenticity and quality is not only prevalent in the food and drink but also in the custom, handmade interior elements, such as the tiles and lights that were sourced from old telephone poles, and the glass tubes used in laboratories.

Commercial Interiors



## TRIBECA MALL OF AFRICA

MIDRAND

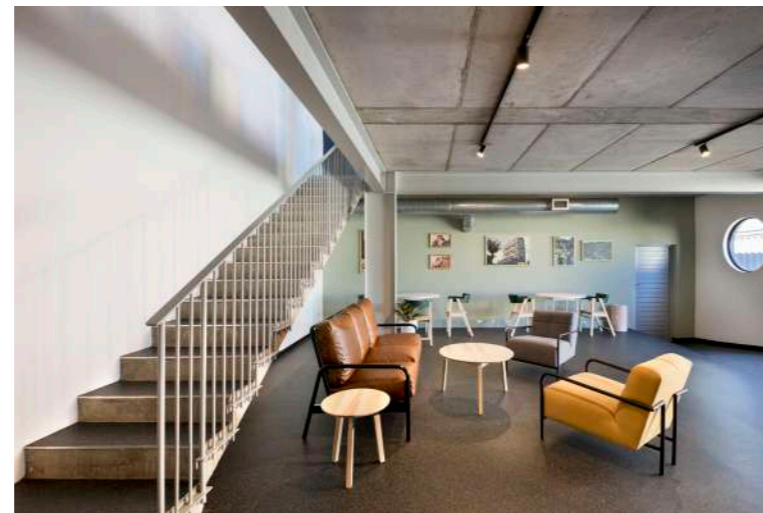
Earthworld

TriBeCa's design is reminiscent of the food and drink it offers, resonating with the clientele's longing for quality and authenticity. The tactility of the space, coupled with meticulous attention to detail, offers an escape from the rather bland mall environment. It is the perfect setting to enjoy the best that life has to offer. The owners demonstrated a particularly keen eye for materials, texture, and proportion, and the use of found objects played an important role in the creation of these 'meaningful things'. All branded objects, including crockery, furniture, and lighting, were lovingly handmade by skilled artists and artisans.

35

CENTURION

# TRIBECA FACTORY TRADE MODEL 12



A box within a box – stacking volumetric space using new and existing fabric.

The existing building: The original building was designed by Philip Kleijnhans in the late 80s. A somewhat post-modern rendition, it was decided to retain parts of the mass brick structure of the old offices and modify it to a later modernist aesthetic. Minor details, such as steel balustrades, were kept to save costs.

Essentially, the new warehouse space had to be increased to more than four times the original size. The old steel structure was removed, and two main structures were added. Aesthetically, we aimed to create the illusion that the boxes were stacked onto one another by keeping the parapets horizontal and concealing the roof at the back. The steel boxes were then stacked on the mass brickwork below.

From a sustainability perspective, all water is harvested from the roofs and stored in above-ground tanks. This water is filtered and used for various processes on-site. Evaporative coolers use the harvested water to cool the space.

The building has been well-crafted by skilled artisans and contractors, resulting in a robust product for a deserving client, hopefully lasting another 50 years. The client takes pride in constructing buildings designed to last beyond the average lifespan of industrial factories, which is typically 20 years.

The concept for the new Nando's drive-through at the Castle Gate Shopping Centre was rooted in the intention to increase brand visibility while simultaneously setting it apart from other generic drive-through offerings. The slanted shape of the roof tower inspired the use of triangles as a design feature, directing elements in both the exterior finishes and interior design. Timber slats were used to vertically clad the pedestrian entrance of the building, creating a recognizable entrance for visitors, while its sloped shape creates a sense of balance against the building core. In the interior, the triangular shape inspired the structure of the daring red room-dividing screen and suspended bulkhead. This oxblood red structure is used to draw patrons into the space and encourages them to spend more time indoors.

# PRETORIA NANDO'S CASTLE GATE



Nando's Savannah Mall, located in Polokwane, has a rich cultural backdrop from which to draw design inspiration. The concept for the interior was derived from extensive research into the crafts, clothing, and traditions of the Northern Sotho and Tswana ethnicities. This research culminated in the choice to combine strong geometric shapes with a palette of red, yellow, and green for the refurbishment of the space. The design is intricate, showcasing a rope screen, flared timber bulkhead, and a contemporary interpretation of a checkerboard tile floor. The end result is an interior space that exudes a sense of warmth and hygge.

## POLOKWANE NANDO'S SAVANNAH MALL





## NANDO'S QUEENSTOWN

EASTERN CAPE

42

This small but spicy casa revamp was completed in early 2020. An unexpected warm color palette of muted terracotta and hues of emerald green is combined effortlessly with hints of vibrant color in pendants, upholstery, signage, and door hardware. Handmade coloured concrete tiles are featured on the order counter and accent walls to add layers of warmth and texture.

Angular patterns are introduced in subtle elements, such as backrest strap details and diagonally cut floor tiles. The bold artwork selection is complemented by monochromatic pendants, wall lights, and wall finish patterns. By including a large natural timber slatted wall and light timber furniture accents, the hints of vibrant color are balanced. The aim to achieve a fun yet contemporary space with a good sense of flow.

Commercial Interiors



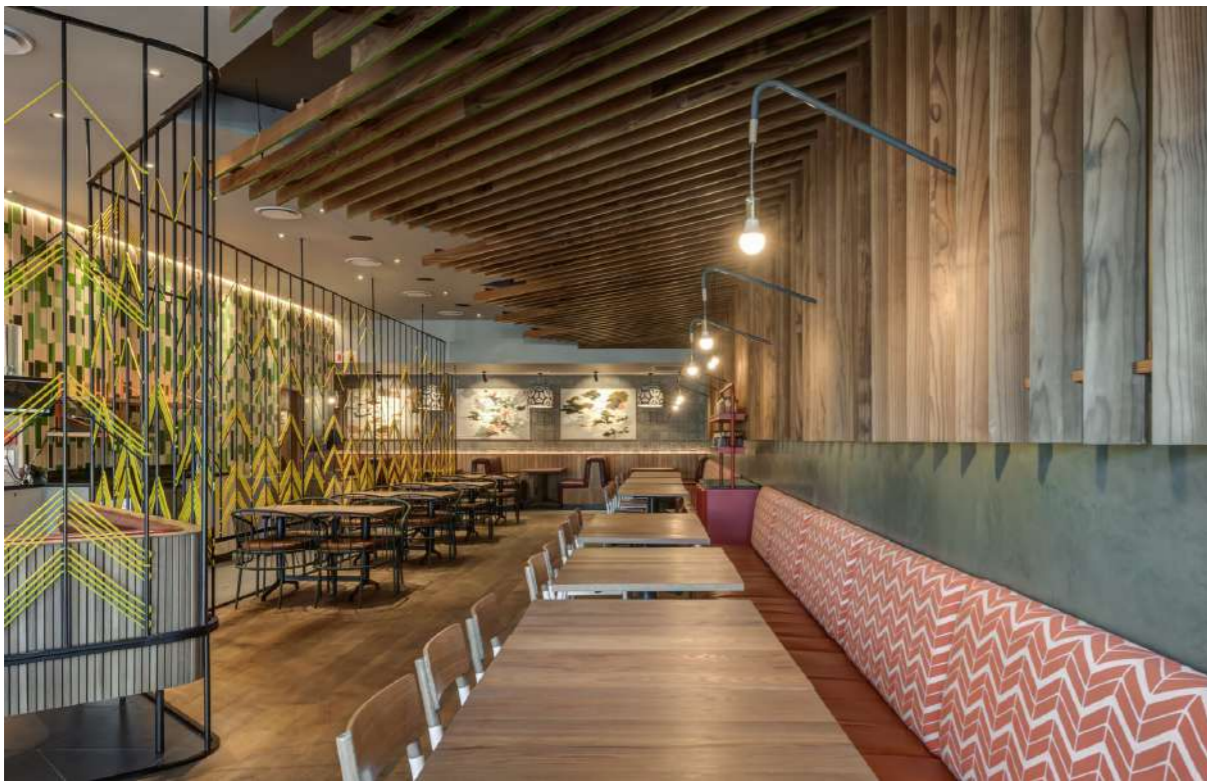
## NANDO'S TUBATSE CROSSING

BURGERSFORT

Earthworld

The concept for the refurbishment of Nando's Tubatse Crossing in Burgersfort, located in the former Lebowa territory, drew inspiration from the pattern, color, and flair of the local community's vibrantly decorated housing. Angular patterns were introduced by means of handmade tiles to the order counter and steel privacy screens, all in lively shades of green, yellow, and orange. The green and white handmade tiles dispersing against a green painted wall are a strong feature upon entering the restaurant, and a beaded mirror from Sithabe African Craft becomes a focal point in the restrooms. Terrazzo tiles, terracotta pendants, and kiaat timber provide natural texture and movement, complementing the art and furniture selection from South African craftsmen. All these design features contribute to a unique dining experience.

43



## NANDO'S HILLCREST

HILLCREST

44

The eclectic and creative energy of Nando's design approach is infectious, generating great excitement at the beginning of each new project. Nando's Hillcrest, located in KwaZulu-Natal, was no exception. The concept's inspiration draws from the province's lush botanical landscape and the authentic African flair of the Zulu community.

Seated beneath a timber canopy, patrons are immersed in a space adorned with printed timber wall panels, rope weaving, and vibrant handmade tiles. Additionally, the interior boasts a striking monochromatic pattern, a design contribution from one of Nando's young designers, Primrose Charmz

Commercial Interiors

## NANDO'S COMARO CROSSING

JOHANNESBURG

Earthworld

Nando's strong commitment to advancing South African design leads to exciting collaborations between designers. True to Nando's distinctive flavor, this Southern Jozi casa boasts a rich creative synergy and an inviting interior. The building's rounded façade is accentuated by a circular bench with a rope backrest beneath a timber spoke bulkhead, set on a reclaimed timber parquet floor.

Existing chairs were upcycled with vibrant paint and woven rope to seamlessly integrate as dynamic elements within the new interior. The African aesthetic fosters an authentic experience for its diverse clientele.

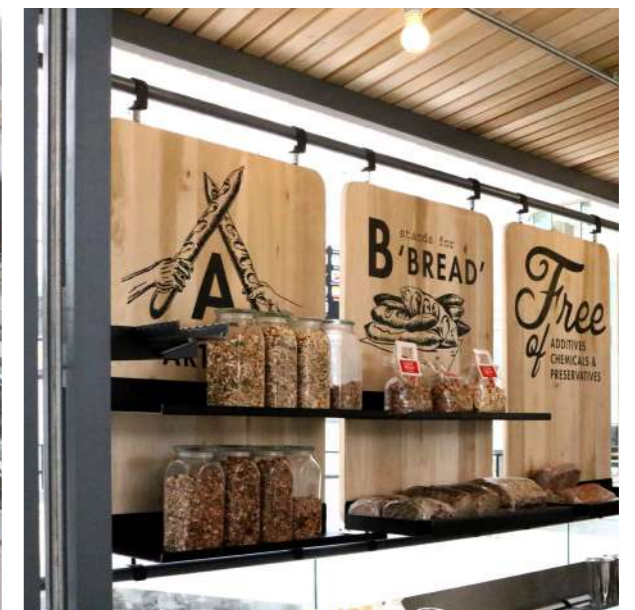
45



# LUCKY BREAD MALL OF AFRICA

MIDRAND

As designers, we were taken through a process of making something meaningful. We gave careful consideration to locally made, handcrafted products and the process of creating objects that could potentially last a century. Our value system, post-2008, is slowly shifting to accepting the qualities of slowly created objects over mass-produced, fast-made products." - "Time is no more money than artichokes are angels.





## LUCKY BREAD BROOKLYN

BROOKLYN MALL

48

The conceptual narrative took its cues from the 1938 Richard Dreyfuss-designed NYC Hudson streamlined steam-powered modern train. These new machines were faster, slicker, and more streamlined, illustrating the dawn of a new modern age. The food and coffee stall under the escalator is an object crafted out of mild steel, brass, timber, and leather. The steel machine is the hero, and pages of carefully considered details brought the steel together.

Commercial Interiors



## LUCKY BREAD MIDSTREAM

MIDSTREAM ESTATE

Earthworld

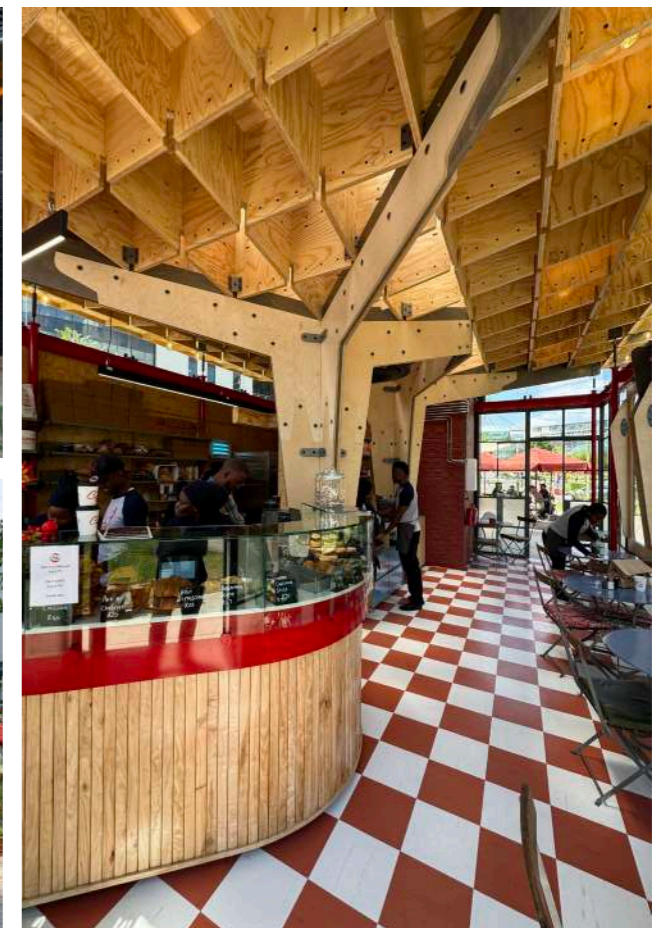
Each new Lucky Bread has a unique conceptual approach and design, reminiscent of those before. It is a small intervention in a larger bicycle shop, seemingly insignificant. Essentially, it comprises merely a counter, introduced to the space as part of the Lucky Bread offering, accompanied by a few tables and chairs. Functionally, the counter serves as both a kitchen and a space to display Lucky Bread's unique fresh products. The materials used are simple: painted mild steel and raw Jacaranda timber. Despite the small scale of the intervention, we endeavored to do justice to this minor project through careful detailing and excellent craftsmanship.

49



# LUCKY BREAD MENLYN MAINE PRETORIA

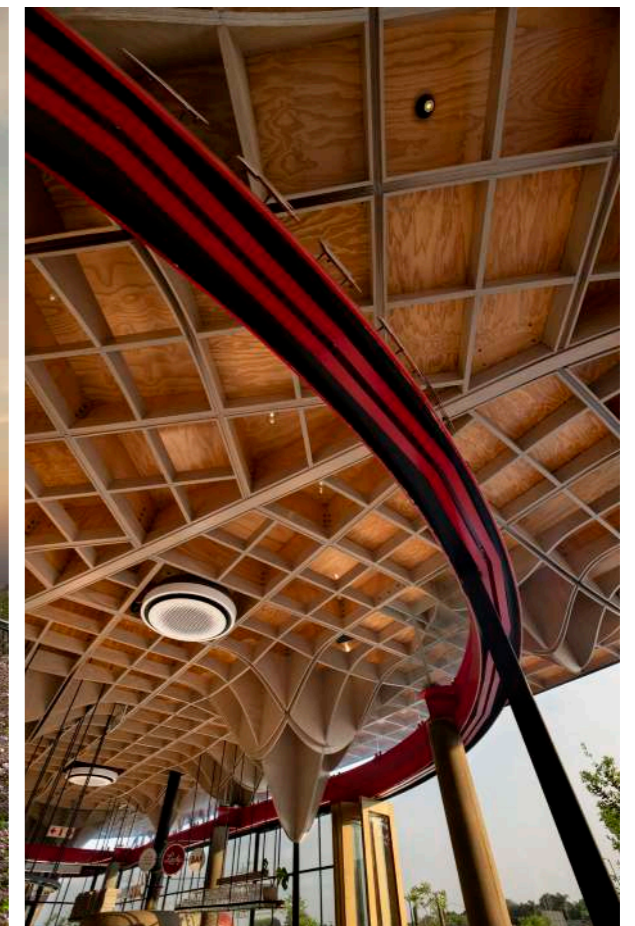
Menlyn Maine Developers required a small coffee shop and shaded outdoor seating. The structure needed to be semi-permanent for potential removal. Earthworld aimed to create a simpler and more efficient building system for small-scale construction. Our goal was to develop a system that anyone could use to build homes, shops, or other structures with basic tools and minimal labour. A complete plywood and steel structural system was designed in detail, modelled in 3D, and sent to CNC machines for cutting and manufacturing off-site into components, which were then rapidly assembled on-site.

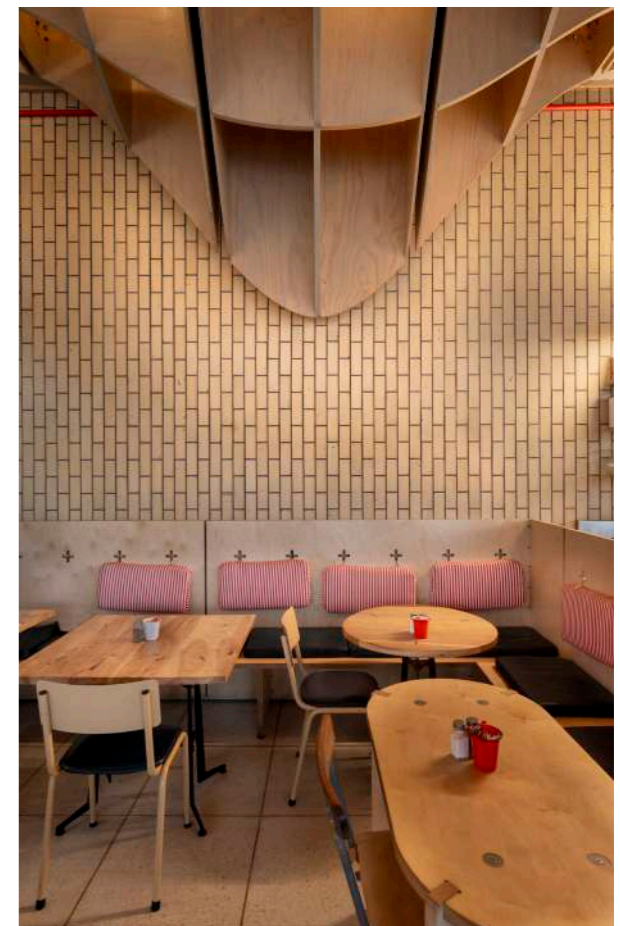


PRETORIA

# LUCKY BREAD CASTLE GATE

Developer Atterbury Property reached out to Earthworld to activate this smaller space in a larger shopping mall development. The small pavilion is nestled between larger commercial boxes and houses a coffee shop / bakery and an interior design shop. A complete plywood and steel structural system – designed in detail and modelled 3-dimensionally in the architect's office – then sent to CNC (computer numerical control) Machines for cutting and manufacturing of site in components and then rapidly assembled on site.





# LUCKY BREAD VILLAGE

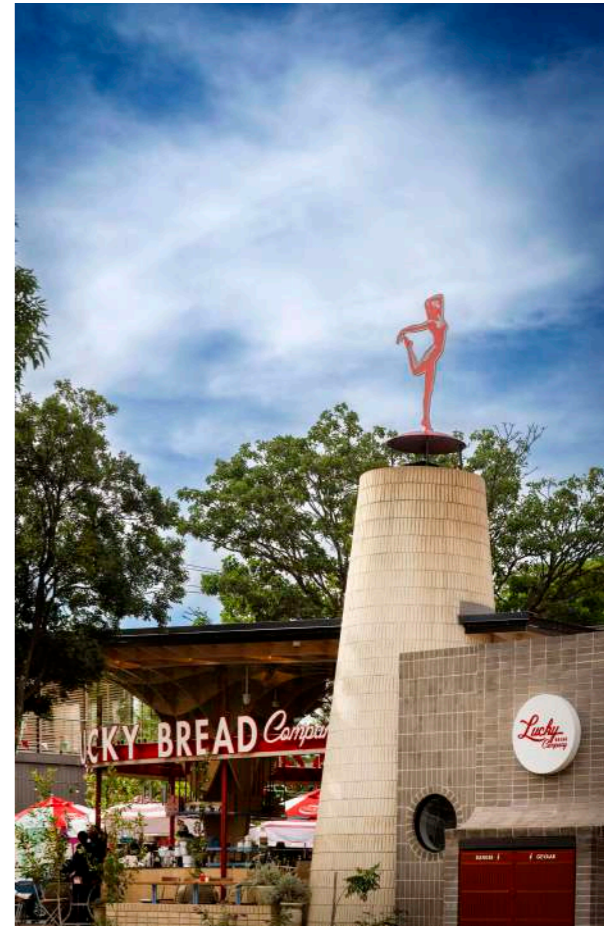
HAZELWOOD

Lucky Bread Village offered a rare opportunity to design a corner pavilion within a vibrant suburban streetscape. Over the past decade, this area in Pretoria has evolved organically, with former residential houses transformed into businesses and restaurants. The result is a collection of intimate one- and two-storey buildings forming what is now known as the Pretoria East Village—simply, the Village. In response, Atterbury Properties embraced diversity by commissioning different architects and styles for each stand, creating a rich, eclectic urban environment.

Positioned on a prominent corner, Lucky Bread emerges as an urban pavilion. The design prioritises openness along both street edges, with a floating roof providing shade and comfort. Generous portions of the site are given back to the public realm, blurring the line between building and street. On fair-weather days, the fully operable shopfront dissolves the boundary between inside and out, allowing the space to extend into the street. The Lucky Bread brand is expressed through a sculptural plywood roof, creating a strong architectural identity. Its fully 3D-modelled plywood and steel structure was CNC-cut, prefabricated, and efficiently assembled on site. Custom steel elements further enhance the building's craft and detail.

A restrained palette of creams and blues complements Lucky Bread's bold red, reinforcing the brand while enriching the architecture. The result is a finely tuned design, shaped by its urban context and the customer experience.





# TRAILWOLF

## WOLWESPRUIT

Reduce, reuse, recycle - these are the sustainability buzzwords. However, when it comes to practically applying these principles, it is not always executed in exciting new ways. At Trailwolf Cycles, a retail outlet and bicycle workshop situated along the Wolwespruit Cycling Trail, using recycled materials in unconventional ways became a means to distinguish ourselves from the rest of the pack.

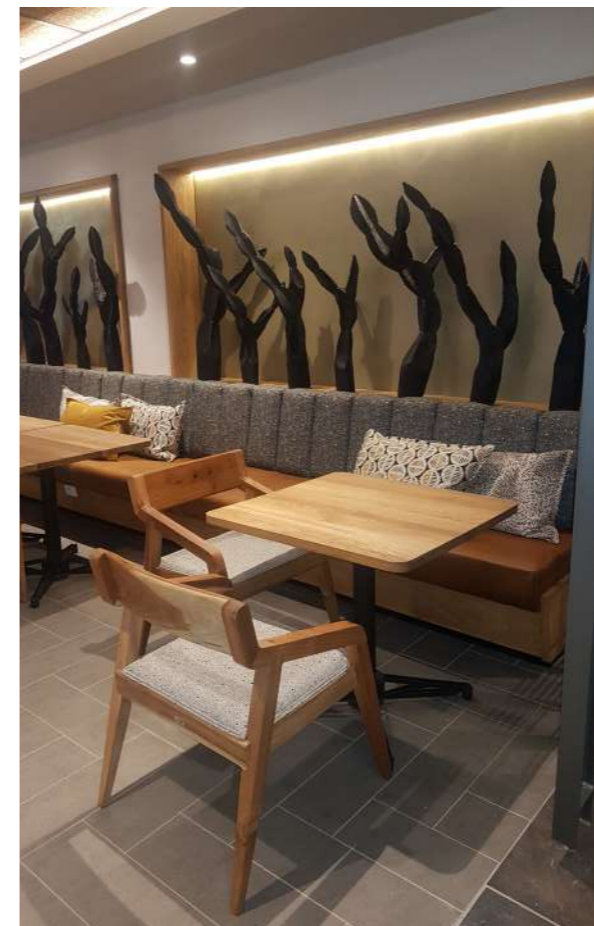




The Skukuza Rest Camp, located on the south-western edge of the Kruger National Park, is not only familiar and well-loved by many South Africans but also by numerous international visitors. The local Tsonga and Swazi communities' use of color and clothing was the major inspiration for the interior design. For example, pendant lights take their cue from the movement of the Tsonga's skirts during traditional dances. The interior becomes a surprising treasure in the middle of the bush and a welcome retreat after a day of exploring the beautiful surroundings.

# SKUKUZA SAFARI LODGE

KRUGER NATIONAL PARK

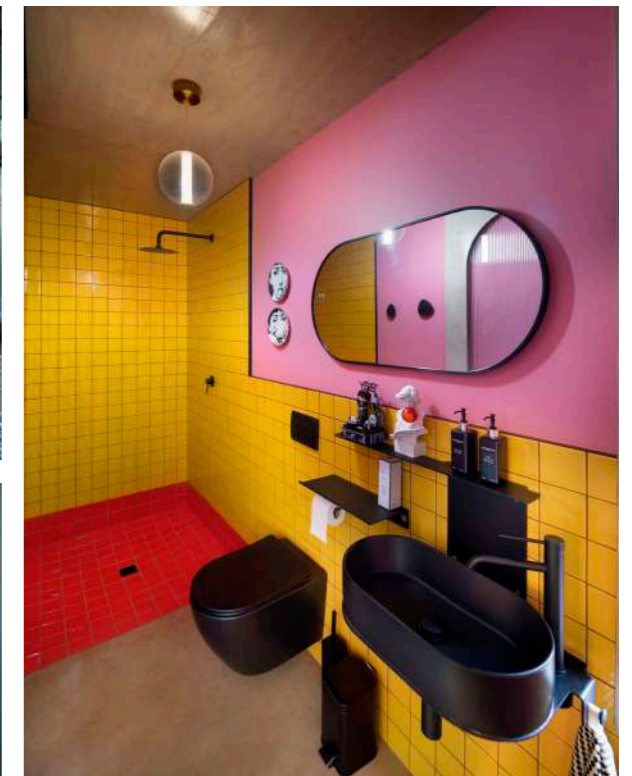




A young couple, both immersed in the creative industries—one an artist, the other a media and brand specialist—commissioned two distinct yet harmonious additions to their home: A compact, independent office to support their professional work, and a doll's house for their daughter, designed as a playful and imaginative space. The brief emphasized minimal disruption to domestic life and seamless integration into the existing home environment. The project was delivered in collaboration with our sister company, Four Revolution, using a rapid and highly digitized workflow: The design was developed in detail and modeled in 3D. The Components were manufactured using CNC (Computer Numerical Control) machines, enabling precision and speed. A complete plywood structural system was used, allowing for efficient prefabrication and clean assembly. 90% of the building was fabricated off-site in the factory. This allowed for a short on-site construction period, minimizing disruption to the clients' daily life. The entire project was completed within 8 weeks from the moment we went on site.

# PLYWOOD OFFICE

PRETORIA



PRETORIA

# INOAR

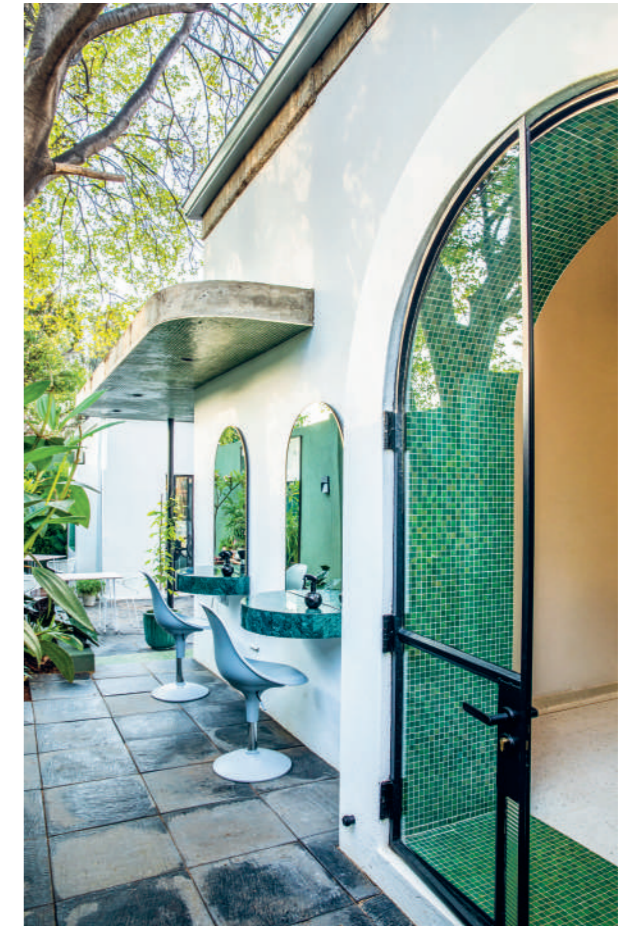


Inoar's new Nieuw Muckleneuk salon blends Brazilian heritage with a nature-inspired concept. Repurposing a former psychiatrist's office and garden flat, the renovated space now accommodates offices, a reception, retail area, café, and salon. The design emphasizes existing trees, integrating large windows to showcase them. Off-shutter concrete extends the garden flat, softening the building's edges, while a central courtyard serves as the heart of the space. A concrete roof with an opening for a Frangipani tree and a gently curving wall around it foster an intimate connection between nature and the architecture.

Commercial Architecture



Earthworld

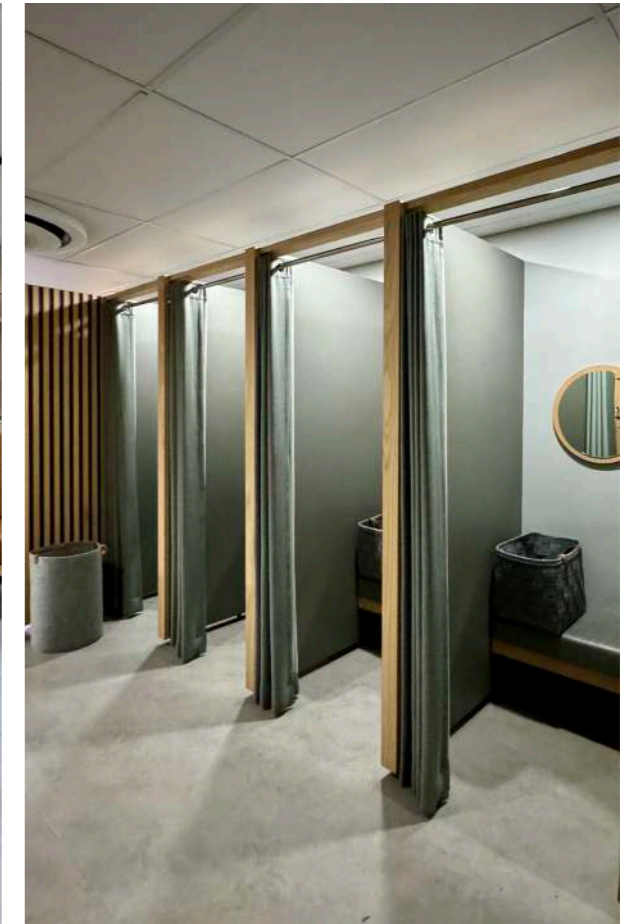


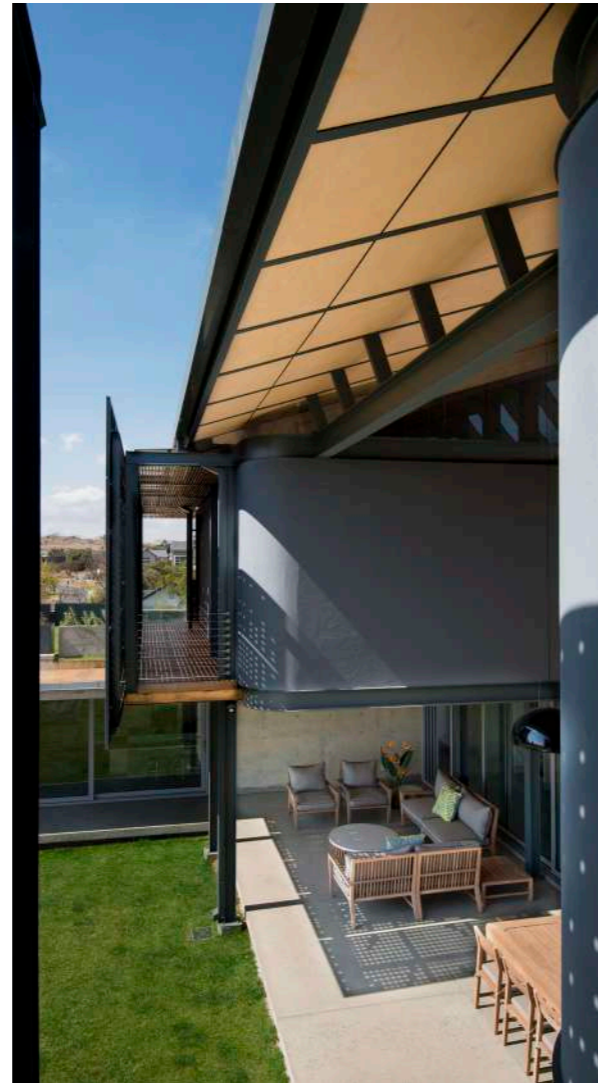


# CAPITAL RADIOLOGY LIFE GROENKLOOF

GROENKLOOF

The refurbishment of Capital Radiology's imaging department at Life Groenkloof Hospital required extensive planning and a deep understanding of patient experience. The client requested a timeless interior that would resonate with all patients and establish a cohesive aesthetic across all their practices. Recognizing that medical imaging can be a stressful experience, the design aimed to create a soothing and calming environment to support patient well-being. The interior was guided by a minimalist palette, where neutral tones of grey and brown were favored over bold colours to evoke calm and relaxation. The simplicity of the space was enriched through fine detailing, including, custom-cut patterns in timber panels, recessed lighting for soft, ambient illumination and leather and upholstered benches for comfort and warmth. The result is a refined, tranquil interior that transforms the clinical experience into a welcoming and dignified journey. The design not only enhances patient comfort but also establishes a visual identity that can be carried out through all Capital Radiology practices.

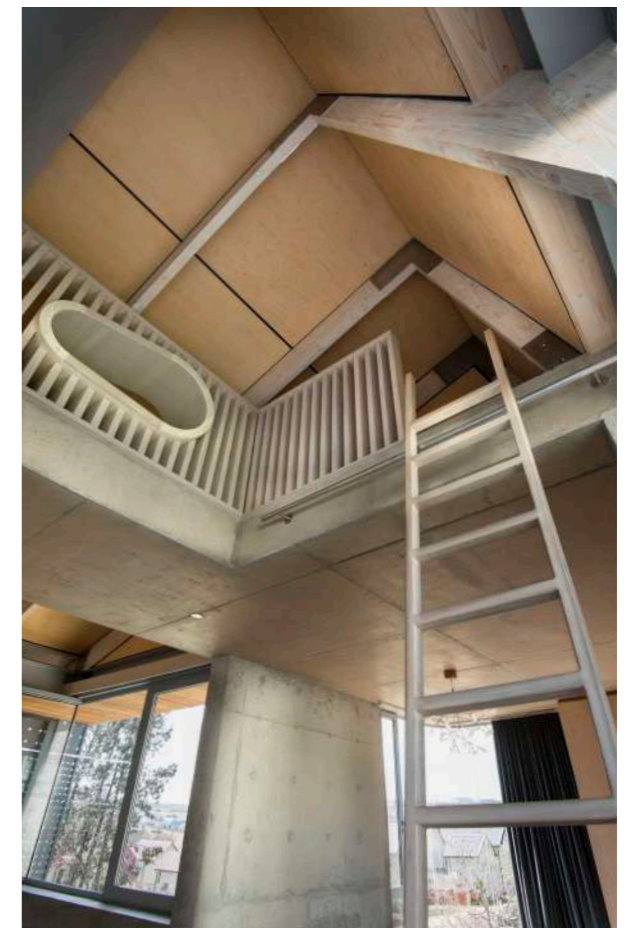
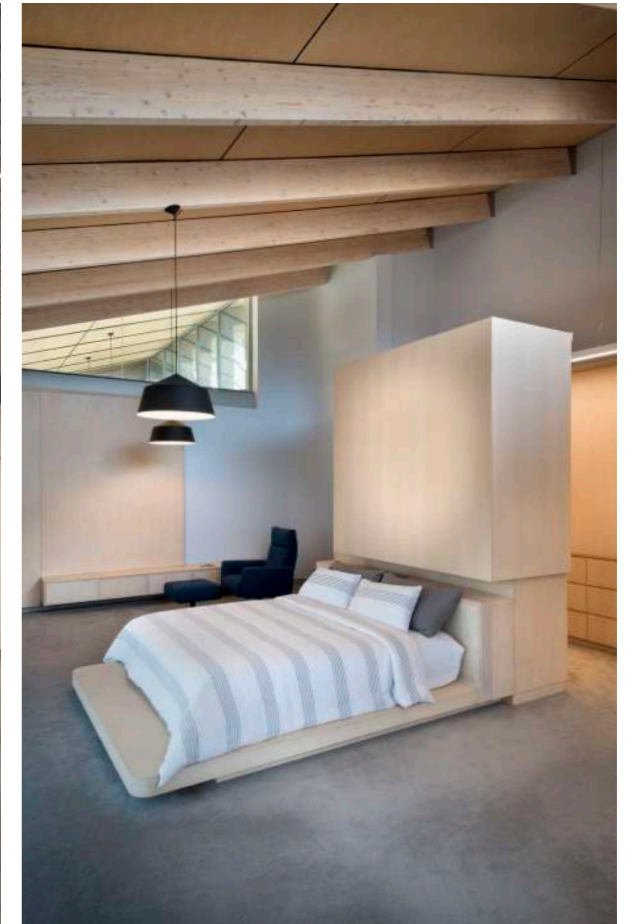




# WATERFALL HOUSE 1

MIDRAND

This technologically advanced home seamlessly blends indoor and outdoor spaces. Guests are encouraged to discover the lively social areas such as the expansive double volume patio, eco-pool that flows into a planted pond, framing the scenic communal lake view, a welcoming living area, and a bar that opens onto the pool and patio, all while ensuring the distinct privacy of the overhead space. The house features a rainwater collection system, borehole filtration station, and full automation for lighting, heating, and entertainment, accessible via cell phone or control panels. This residence encourages undiscovered possibilities within the South African architectural scene.



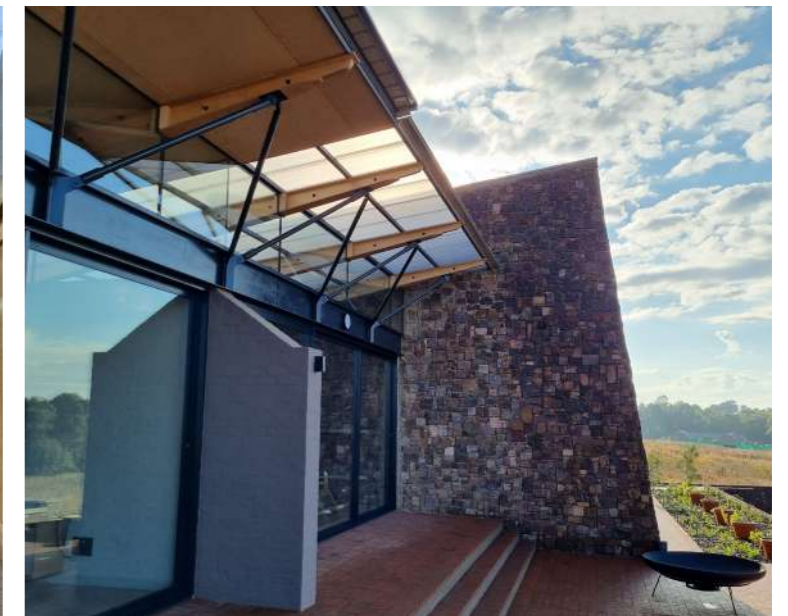


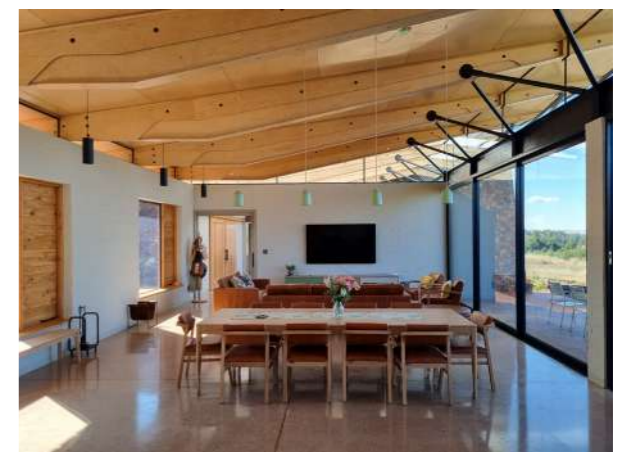
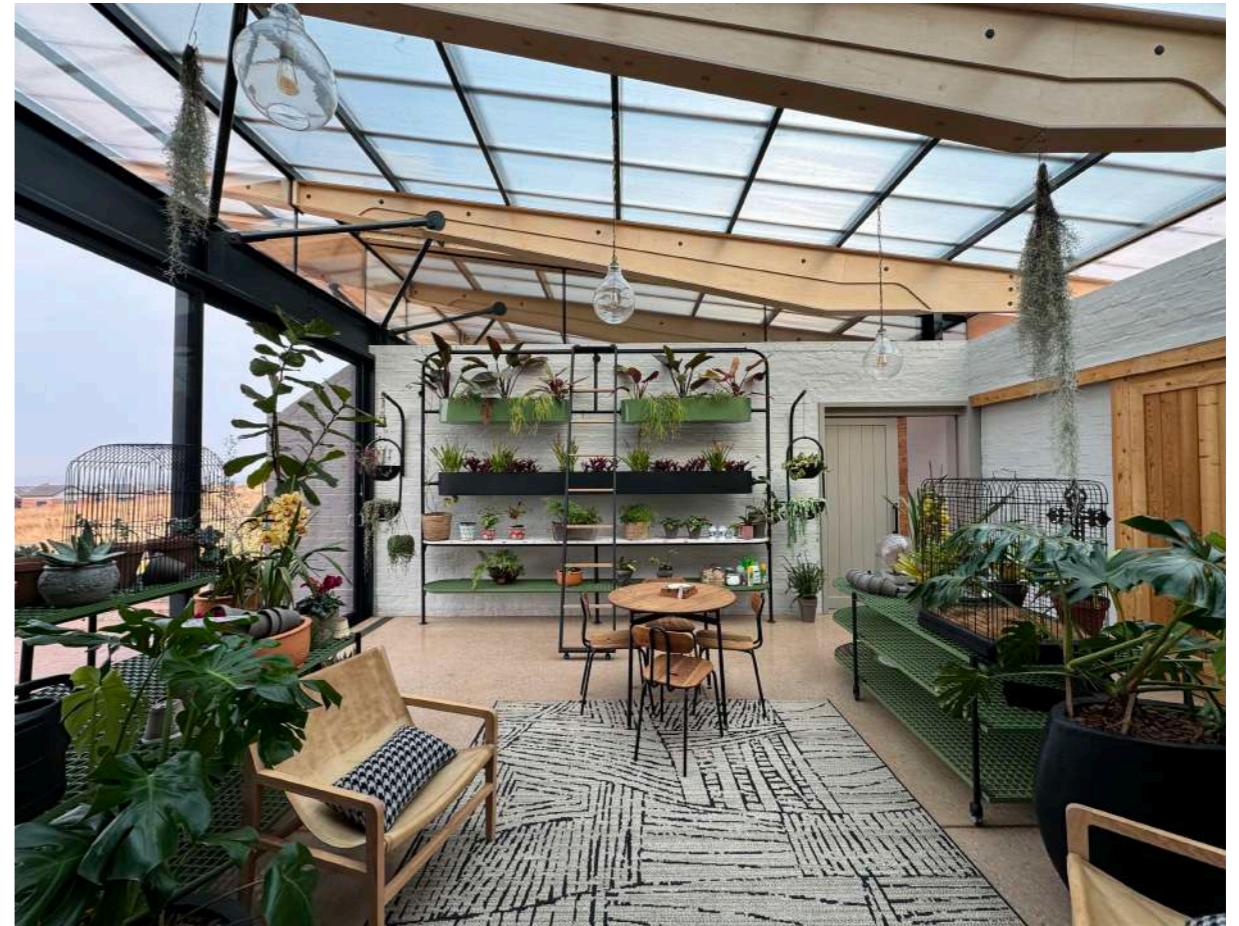
# HIGHVELD HOUSE

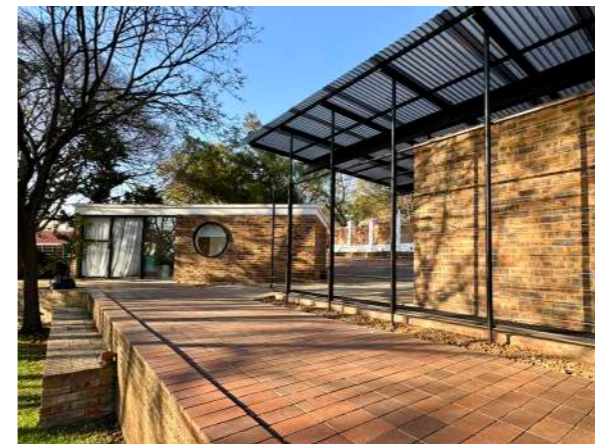
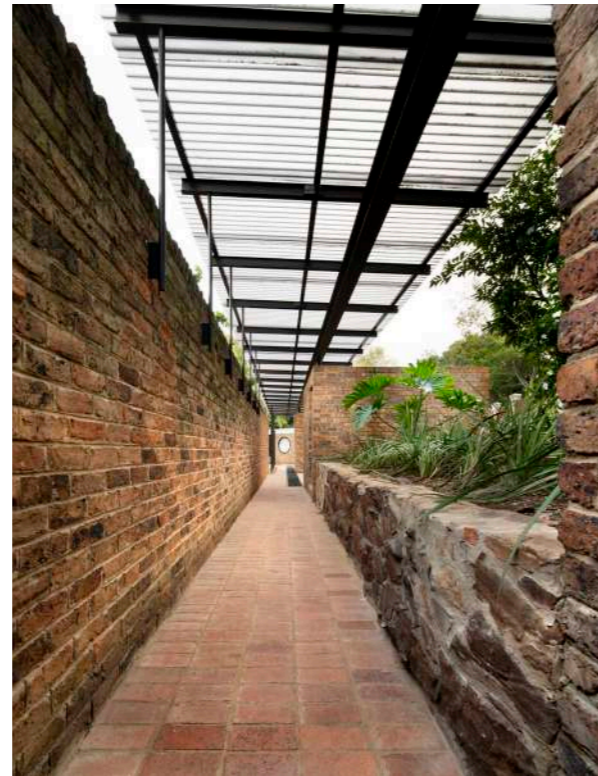
MIDDELBURG

Nestled in the rolling hills of Mpumalanga's Highveld, the home caters to passionate plant lovers, prioritizing a greenhouse before the house. The conservatory serves as the main point of entry, from here one can move freely into the summer and winter courtyards, the western living wing, and the eastern bedroom wing.

Operating off the grid, the house employs various sustainable strategies for thermal efficiency and reduced carbon footprint. The interior is composed of natural materials, with stone walls, honed and polished concrete floors, and bagged washed masonry walls. The birch plywood ceiling's light tone influenced the Scandinavian style evident in the cabinetry and kitchen design.





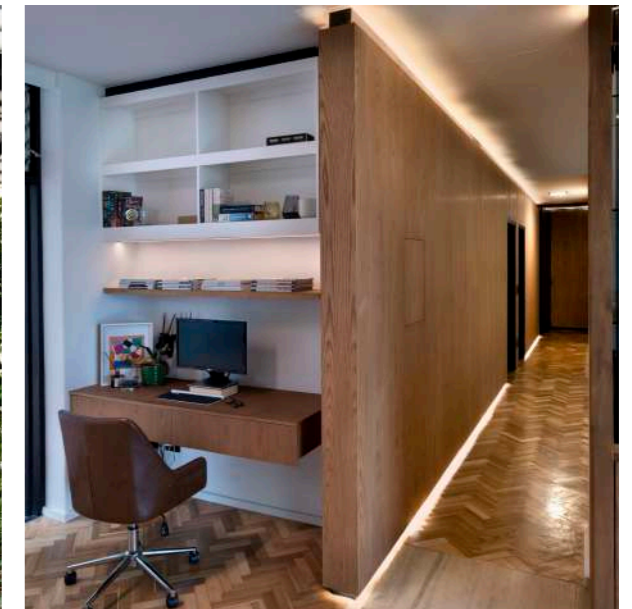
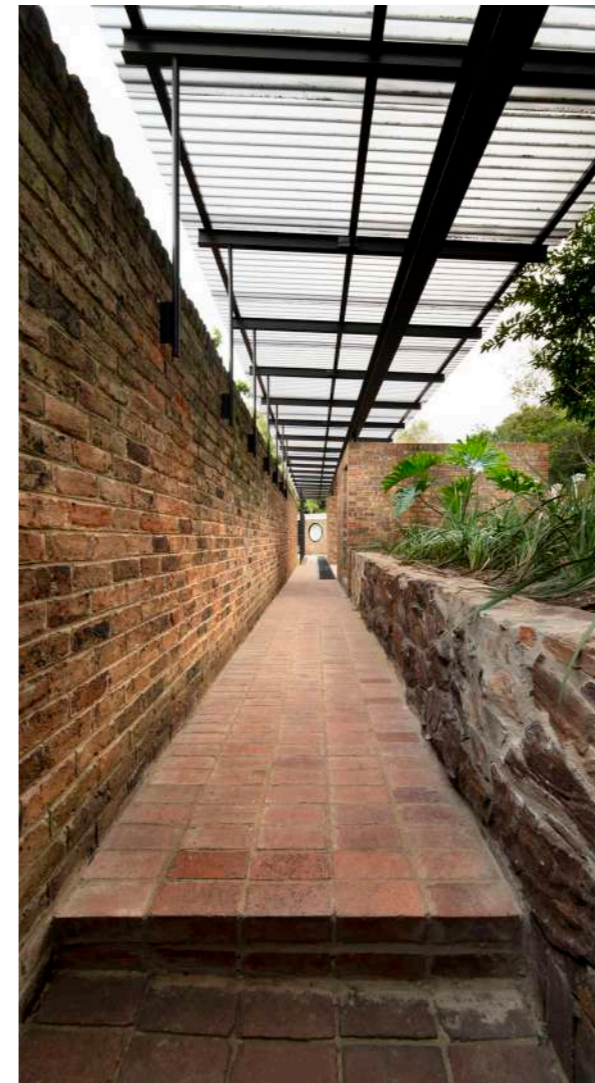


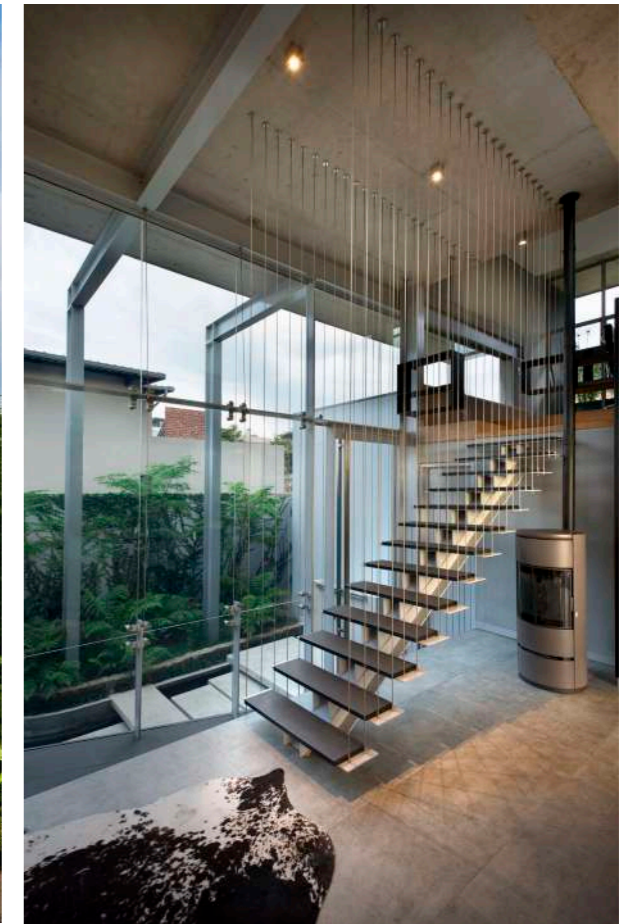
## 20TH CENTURY MODERNIST PRESERVATION

PRETORIA

Earthworld

As we honor South Africa's architectural heritage, Earthworld proudly highlights a pioneering project by Anthony Carden (Tony) Doherty from 1967, a time coinciding with the Minitoria and Pretoria Art Museum. Doherty's introduction of aluminium-framed doors and windows was a bold move that set a new standard in modern architecture. Doherty's innovative use of aluminium framing allowed for expansive glass panels, integrating indoor and outdoor spaces and significantly enhancing both aesthetic and functionality. His design philosophy, rooted in modernist ideals, blended harmoniously with South Africa's unique context, creating a lasting architectural impact. In a testament to this legacy, Earthworld recently completed a meticulous renovation of Doherty's masterpiece. The residence was carefully disassembled, serviced, and reassembled to honor the original 1967 design. This project not only preserves but also celebrates the architectural advancements of Tony Doherty, showcasing a seamless integration of past and present. Earthworld remains committed to honoring architectural heritage through thoughtful restoration and innovation.





## FLOATING CONCRETE ROOF

LYNNWOOD RIDGE

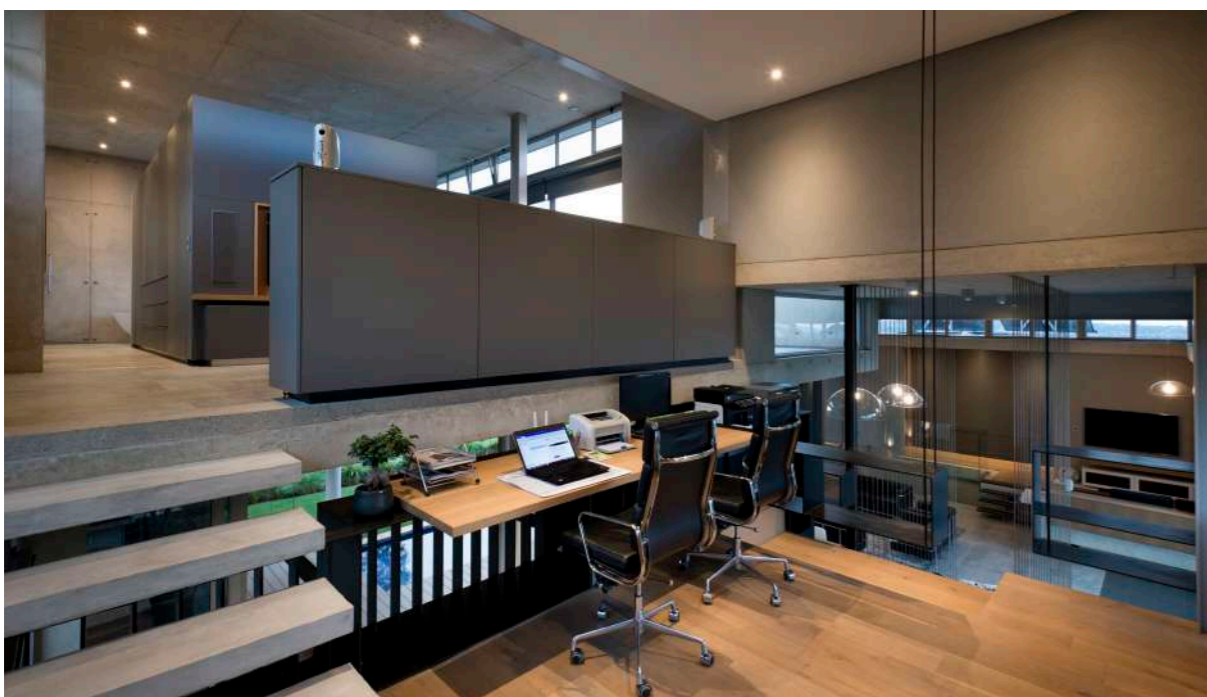
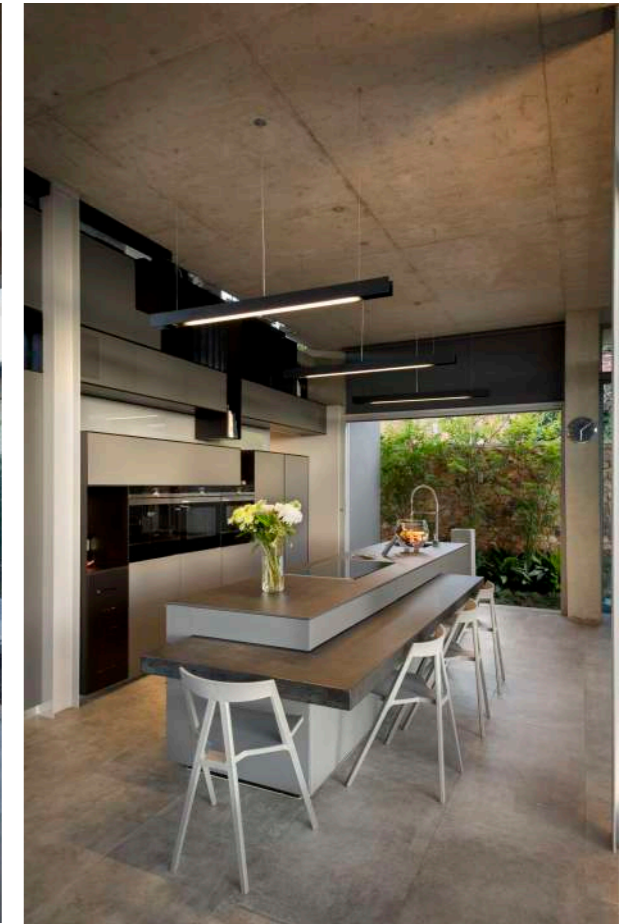
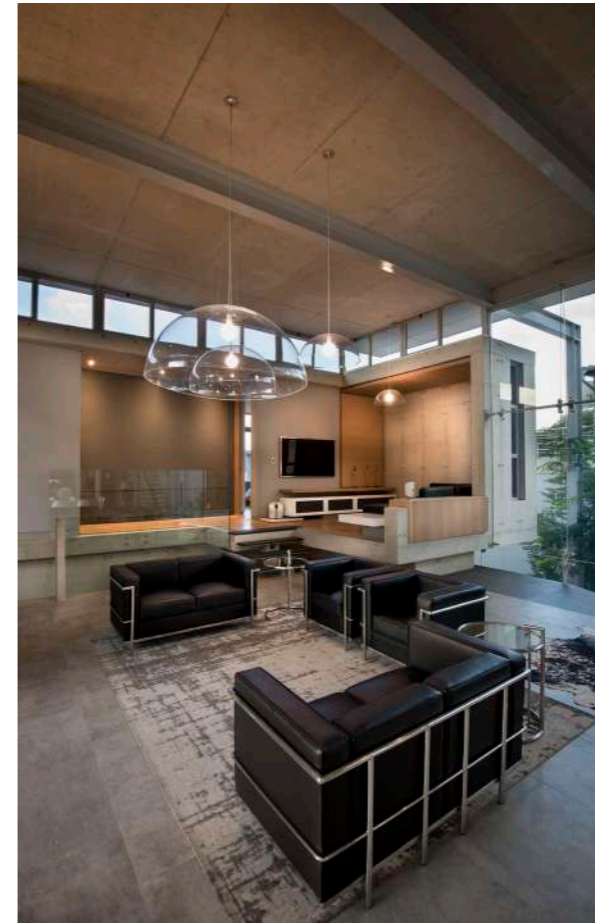
84

This project belongs to a body of work where the relationship between structure, the impact on a site and the architect's role as mediator between landscape and man was explored. The entire site should become the actual dwelling. The structure must merely reinforce the latent potential of the site, ordering nature just enough to facilitate dwelling. The constraints of the project created an interesting interplay between the size of the house, requiring 4 bedrooms to house the family, and the compact nature of the estate in which the project finds itself situated.

Residential Architecture

Earthworld

85





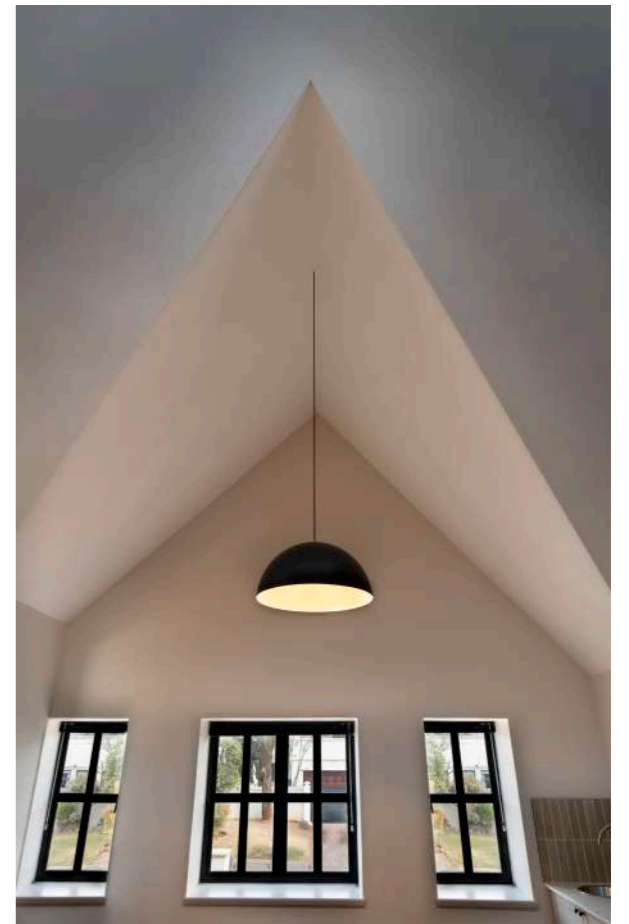
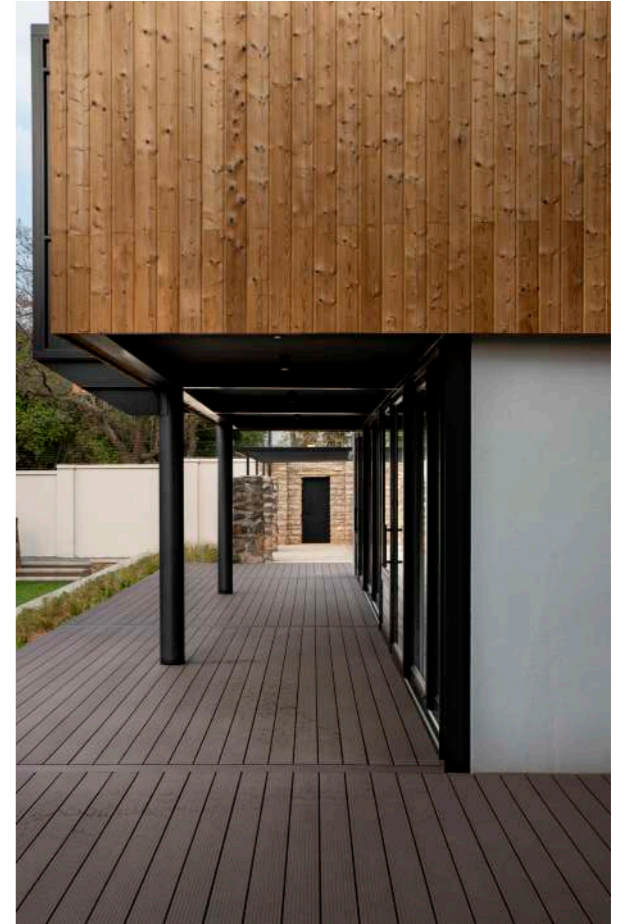
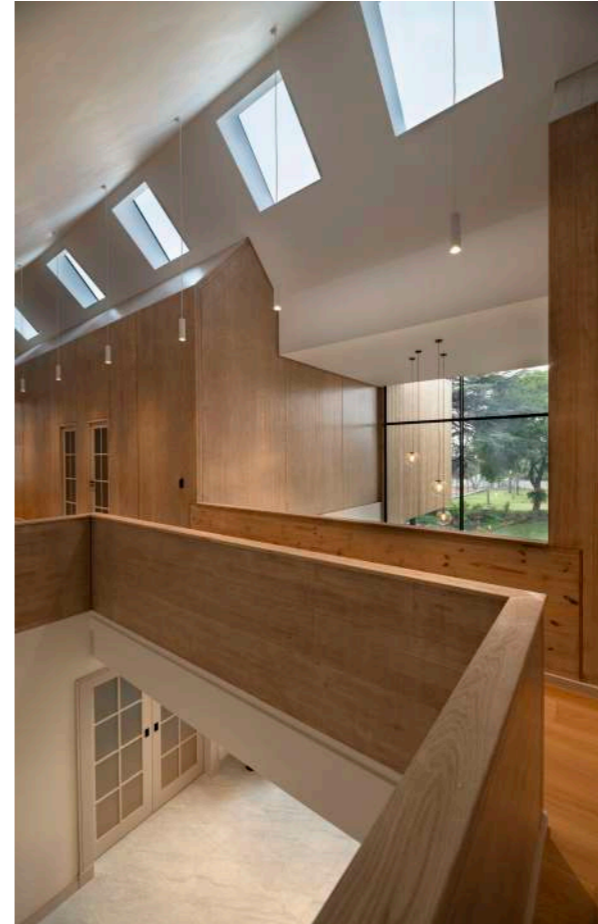
BROOKLYN

## THAI RESIDENCE

---

The Official Residence of the Ambassador of Thailand, historically known as “Brooklyn House,” is a landmark property in Pretoria with significant architectural and political heritage. Originally built in the early 1930s and later expanded, the residence has housed prominent South African figures and hosted pivotal political events. The Royal Thai Embassy has commissioned Earthworld Architects to modernize and expand the residence while preserving its historic character. The project aims to create a contemporary, functional home that respects and highlights the building’s original features.

The design retains and celebrates the historic exterior shell and roof gables, while introducing a contemporary “box” structure within the roof, clad in timber slats. This new element contrasts with and complements the original architecture. The northern masonry walls are replaced with glass sliding doors, enhancing the connection between indoor and outdoor spaces and maximizing enjoyment of the extensive gardens. The “box” structure is constructed from Cross Laminated Timber (CLT), a highly innovative and sustainable engineered wood product. CLT was selected for its exceptional strength-to-weight ratio, allowing for a lightweight structure that does not require additional foundations and can be rapidly assembled atop the existing building. This approach minimized disruption to the historic residence and expedited the construction process. Notably, this project represents one of the largest applications of CLT in South Africa, setting a new benchmark for sustainable building practices in the region. This approach balances heritage conservation with modern living. The intervention is intentionally distinct yet respectful, highlighting the original building’s character while providing 21st-century amenities. The new elements are visually and functionally integrated, ensuring the residence remains a prestigious and comfortable home for future ambassadors.



# MAGAZINES, NEWSPAPERS, ARTICLE AND BOOKS

## PUBLICATIONS

- 2025: Lucky Bread Editors, 2025\_Lucky Bread Company\_PIA Award for Architecture 2025 Win!\_Available from [www.luckybread.co.za/blog/pia-2025](http://www.luckybread.co.za/blog/pia-2025) Accessed 17 November 2025 <https://luckybread.co.za/blog/pia-2025>
- 2025: Slabbert, A. 2025. Boston Hydro\_Property giant now also generates green power - Maroela Media\_ accessed 2025.10.23.pdf [https://maroelamedia.co.za/nuus/sa-nuus/video-eiendomsreus-wek-nou-ook-groen-kragop/?mc\\_cid=464e326421&mc\\_eid=117d4a54c8](https://maroelamedia.co.za/nuus/sa-nuus/video-eiendomsreus-wek-nou-ook-groen-kragop/?mc_cid=464e326421&mc_eid=117d4a54c8)
- 2024: Cemcrete, 2024. Project Design Journal\_Nando's Diepkloof Square - CemcreteOnline - Available from [www.cemcrete.co.za](http://www.cemcrete.co.za) Accessed 24 May 2024.pdf
- 2024: SCAPE\_April 2024\_In Conversation With\_Vol. 103 by Paper Plane Publications - Issuu, Pg 74-79 accessed 2024.04.10 [https://issuu.com/outsideandinmag/docs/scape\\_april\\_24\\_retail\\_issuu](https://issuu.com/outsideandinmag/docs/scape_april_24_retail_issuu)
- 2024: Graphisoft website\_Future Africa Campus Showcast\_ accessed 2024.03.06 file:///Z:/F/EarthWorld%20Company%20Profile Publications%20(Scans%20of%20Articles)/2024\_Graphisoft.com.%20Future%20Africa%20Campus%20Earthworld%20Architects,%20South%20Africa,%20https---graphisoft.com-case-studies-earthworld-future-africa%20accessed%202024.03.06.html
- 2024: Both, M. 2024. Leef groen in die berge - Alto Organic retreat. Rapport Beleef, 14 Januarie, bl.2.
- 2023: Architizer Editors, 2023\_Earthworld\_20 Best Architecture Firms in South Africa - Architizer Journal. Online - available from [www.architizer.com](http://www.architizer.com) Accessed 10 October 2023
- 2021: Wood, G. 2021. Belgique, Cést Chic - Belgian Embassy. Visi, August-September, Issue 115, p.184-187
- Besson, C. 2021. Every day is a good hair day - INOAR. Pro Lanscaper, October, Retail Issue, p.Cover, 55-60 (magazine)
- De Lange, A. 2021. Boldly Brazilian - Inoar. Visi, August-September, Issue 115, p.150-153 (magazine)
- Eksteen, A. 2021. IUPA 2020 Special Prize - Future Africa. Bauwelt 1.2021, p.16
- Eksteen, A. 2021. Future Africa Innovation Campus Developing African Science Leadership, Pretoria, South Africa, 2018. IUPA - World Architecture 2021-01, p.11-13, p.44-49
- Gunter, A. 2021. Earthworld Architects' House Dreyer, Mooikloof Estate, Pretoria. Timber IQ Issue 52 February-March 2021, p.Cover, p.6-11
- Klinger, A. 2021. Influencers' Influences - Earthworld Architects. Visi, June-July 2021, Issue 114, p.40-42
- Sterkowicz, J. 2021. INOAR SA OPENS FLAGSHIP SALON & LIFESTYLE CENTRE IN PRETORIA. Professional Beauty. Online - Available from [www.probeauty.co.za](http://www.probeauty.co.za) Accessed 06 July 2021. p8\_July 2021
- Van Breda, M. 2021. Nuwe Spogsalon-INOAR. Sarie. Online - Available from [www.sarie.com](http://www.sarie.com) Accessed 01 July 2021. p11\_Julie-August 2021
- Wood, G. 2021. Belgique, Cést Chic - Belgian Embassy. Visi, August-September, Issue 115, p.184-187
- 2020: Slawik, H; Bergmann, J; Buchmeier, M; Tinney, S. (2020). Foghound Interactive Coffee Shop & Showroom. Container Atlas 2010-2020: Pg 70-73, 289 (Book)
- De Lange, A. (2020). Meeting of Minds - Future Africa. Visi Issue 106 Feb-Mar 2020, Pg 86-95 (magazine)
- Wind, H. (2020). Multiplex spanten als een sociale legpuzzel- Future Africa. Het Houtblad Feb 2020 Issue 32 number 1\_Pg-Cover, Pg 6-13 (online magazine)
- Unknown Author. 2020. Coertse Waterfall. Visi Kitchens, 2020-2021, p.42-43 (magazine)
- Unknown Author. 2020. Future Africa. Visi Kitchens, 2020-2021, p.50 (magazine)
- van der Lugt, P. 2020. Tomorrow's Timber, PEFC Edition, Material District. Future Africa Campus. (book)
- Scholder, N. 2020. Starke Projekte für den urbanen Raum - Future Africa. Bauwelt 23.2020 12 November 2020, p.19 (magazine)
- 2019: De Beer, D. (2019). Campus Creative - Future Africa. Visi Issue 105 Dec 2019 - Jan 2020: pg 159 (magazine)
- Hardisty, M. (2019). Growing Green - House Dreyer. Positive Impact Issue 4.0 2019: 00pg 84-92 (magazine)
- Visser, A. (2019). Just Add Water - House Dreyer. Earthworks Issue 47 July-Sept 2019: pg 106-111 (magazine)
- Wood, G. (2019). Work of Craft - Earthworld Architects. Visi Iconic 100th Edition Feb-Mar 2019: pg 322 (magazine)
- Prof. Barker, A. (2019). Braam de Villiers and André Eksteen. Boukunde 75th Anniversary 2019: pg 200-203 (Book)
- Prof. Barker, A. (2019). 21st Century Makers. ArchSa Issue 95 Jan-Feb 2019: pg 22-31 (magazine)
- Unknown Author. 2019. Schools\_ Universities\_Facilities - Future Africa. ProLandscape, December 2019, Coffee Table Edt., p.124-129
- 2018: Author Unknown (2017) Stortemelk Hydropower Plant - Construction World Dec 2018: Pg 1,11,62 (magazine)
- Author Unknown (2018). Eco Crafted - House Nieuwenhuys. Habitat July-August 2018: pg Cover, 62-68 (magazine)
- Earthworld Architects (2018). Earthworld Architects and Interiors Advert. Habitat July-August 2018 (magazine)
- Universal Plywoods (2018). Wood for Thought - Future Africa. Timber IQ June-July 2018: pg Cover, 12-14 (magazine)
- Van der Berg, C. (2018). Leader of the pack - Trailwolf Cycles. Earthworks Issue 42 April-June 2018: pg 074-081 (magazine)
- Author Unknown (2018). Earthworld Architects and Interiors Projects. Digest of SA Architecture vol 23: pg 188-189 (magazine)
- Earthworld Architects (2018). Earthworld Architects and Interiors Eksteen, A. (2018). The role of digital design and manufacture in redefining current value chains and contractual environment. Wood conference 8th, p. 016 (magazine)
- 2017: Author Unknown (2017) Stortemelk Hydropower Plant - Civil Engineering SAICE Award finalists vol 25 No11 - Dec 2017: Pg 21 (magazine)
- Houyoux, N. (2017) Stortemelk Hydropower Plant - Abstract vol 57, Nov 2017: Pg 34-39
- Randall, V. (2017). Tribeca Central Facotry. Digest of SA Architecture vol 22: pg 112-113 (magazine)
- Van Wyk, P, Olivier, A. (2017). Stortemelk Hydropower Plant. Digest of SA Architecture vol 22: pg 48-49 (magazine)
- Venter, D. (2017). House Mouton - Bushveld Retreat. Garden and Home SA May 2017: pg 18-19 (magazine)
- 2016: Author Unknown 2016. 2015/2016 AfriSam-SAIA Award for Sustainable Architecture and Innovation - I'CAT. Timber IQ, Aug-Sept 2016, p.38-39 (Magazine)
- Confeh, J.L. (2016). HOUSE MOUTON. OGOJIII, A. Cycle 04&05/2016: Issue 7: pg 76 (Magazine)
- Author Unknou. 2016. House Van Dyk. DIGEST of SA Architecture vol 21, 2016, p.164-165
- Proyectos. (2016). CASA GAUCHE SUDAFRICA. OBRA (Argentina), 3: 35: June 2016: pg 56-64 (Magazine)
- Morollo, M.K. (2016). Soul of Sustainability. PERSPECTIVE, INSPIRING ARCHITECTURE & DESIGN (Hong-Kong), Issue 04 April 2016: pg 70-74 (Magazine)
- Dimmer, K. (2016). Pillars of Excellence. EARTHWORKS, Issue 30: Feb+March 2016: pg 25-33 (Magazine)
- Author unknown. (2016). Walking the talk. LEADING ARCHITECTURE & DESIGN, Feb+March 2016:pg 50 (Magazine)
- Author Unknown (2016). I'CAT. Timber.IQ Aug-Sept 2016: pg 38-39 (Magazine)
- Stehr, M. (2016). 29 because it's a stellar achievement. VISI, Design Issue: pg 178 (Magazine)

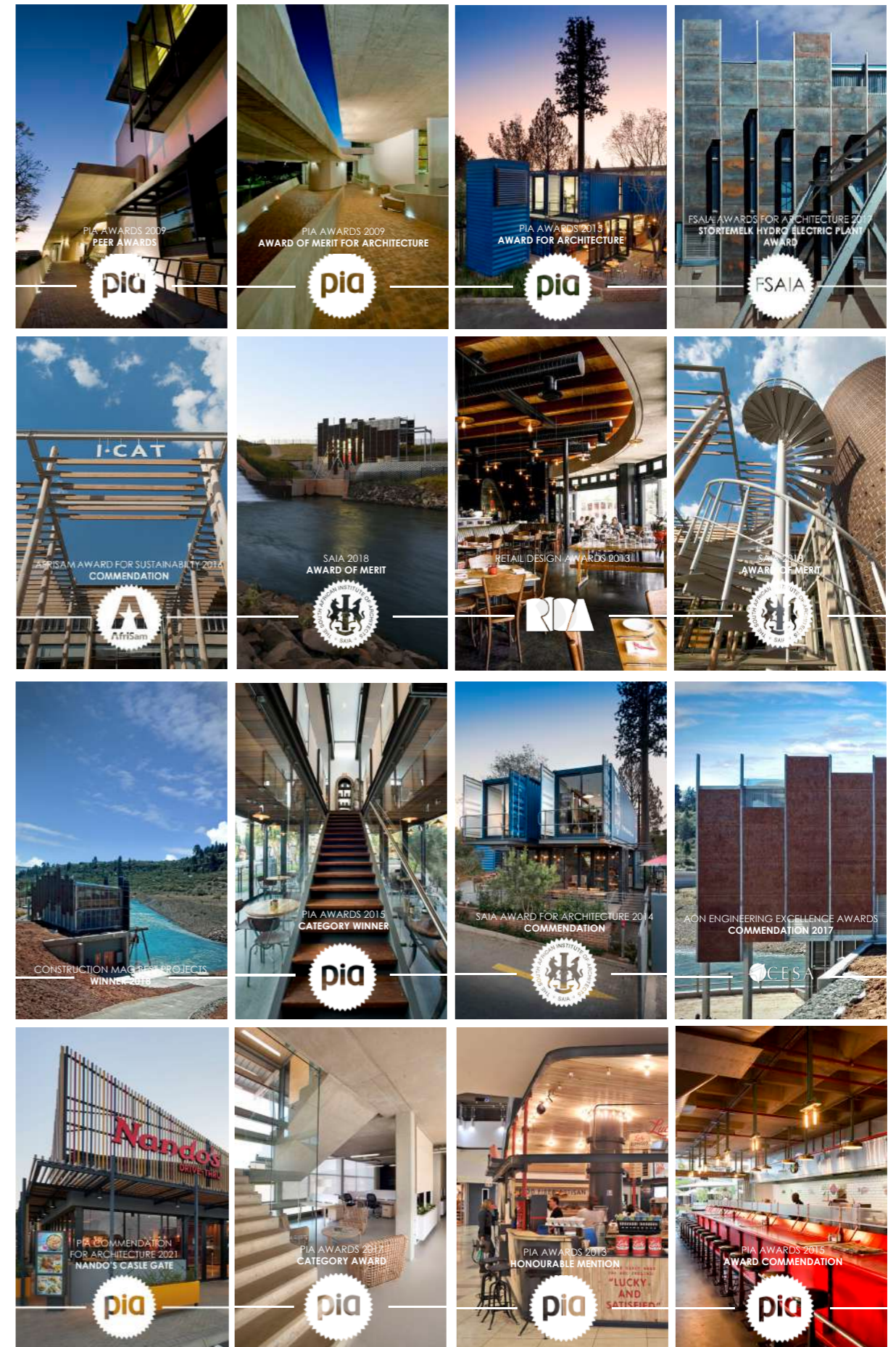
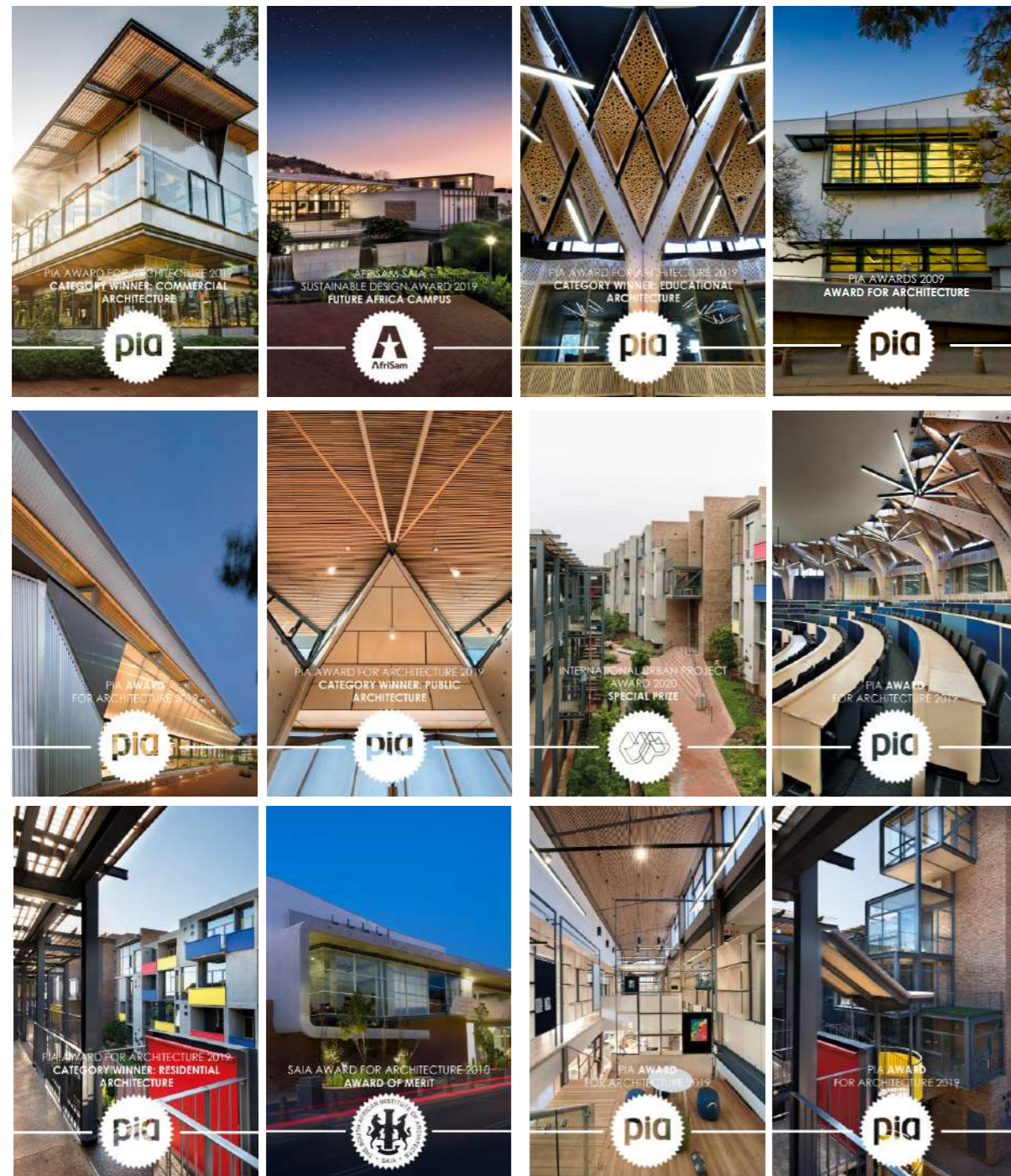
# MAGAZINES, NEWSPAPERS, ARTICLE AND BOOKS

## PUBLICATIONS

- 2015: Greenwood, T. (2015). *Coffee culture*. VISI, No. 79: pg 102-109 (Magazine)  
 Author unknown. (2015). *Haute Lumiere 2015. LIGHTING IN DESING*, No. 11-12/15: pg 8-9 (Magazine)
- 2014: De Villiers, B. (2014). *Foghound Interactive, Coffee Shop and Showroom*. DIGEST South African Architecture, Vol 19: pg 218-219. (Magazine)  
 Eksteen, A. (2014). *House Izeboud, Lynnwood, Pretoria, Gauteng*. DIGEST South African Architecture, Vol 20: pg 202-203. (Magazine)  
 De Villiers, B. (2014). *House Mouton, Pretoria, Gauteng*. DIGEST South African Architecture, Vol 19: pg 30-31. (Magazine)  
 Botha, R. (2014). *I-Cat Offices and Warehouse, N4 Gateway Park, Pretoria, Gauteng*. DIGEST South African Architecture, Vol 20: pg 136-137. (Magazine)  
 De Lange, A. (2014). *Raw Sophistication*. VISI, No. 74: pg 82-89 (Magazine)  
 Author Unknown. (2014). *TALKING RETAIL DESING TRENDS, SHOPPINGSA*. Edition 132, August 2014:pg 34-36 (Magazine)
- 2013: Boonen, S. (2013). *HOUSE JOUBERT*. VOLKSKRANT MAGAZINE: pg 42-46 (Magazine)  
 Eksteen, A. (2013). *House Gauche, Silver Lakes Golf Estate, Pretoria, Gauteng*. DIGEST South African Architecture, Vol 18: pg 138-139. (Magazine)
- 2012: *Inside Home Page - Int. Web News Letter - House Joubert -Partyhouse Pretoria - 2013 (Web page)*  
 Property Magazine, September 2012, page 9, Gisela Nel, *Hot Space\_It's All about Attitude (Magazine)*  
 Trapido, A. (2011). *Move over Manhattan*. TASTEMAG, pg 92-97. (Magazine)
- 2011: *Dickinson Park Development - Projects Magazine, Issue 04/08, 2011, page 27 (Magazine)*  
*Architectural Digest 2011 (Magazine)*  
*Contemporary Capital 2011. Alpine Attitude Hotel: pg 118 (Book)*  
*Contemporary Capital 2011. House*
- 2010: *Coetzer: pg 198-199 (Book)*  
*Contemporary Capital 2011. Rejuve-A-Nation Project: pg 88-89 (Book)*  
 De Villiers, B. *TECHNOLOGY IN ARCHITECTURE. Bioclimatic design for energy-efficient buildings*. October/ November 2011: Vol. 1 no. 7 pg 34 – 38 (Magazine)  
 Boruvka, N. *TOP BILLING. Power House*. November 2011: pg 68 – 70 (Magazine)
- 2010: *Inside Home Page - Int. Web News Letter - Alpine attitude - 2010 (Web page)*  
*Inside Home Page - Int. Web News Letter - House Bodard - East meets South - 2009,2010 (Web page)*  
 Author unknown. 2010. *Fokus of Alternatiewe Energie - Eis meer terug van Eskom as son jou water tuis verhit - van Dijk*. Rapport, 20 January 2010, pg unknown (Newspaper article)  
 Author unknown. 2010. *University of Pretoria adds more lecture halls at its main campus*. Construction News magazine, Volume 1 no. 7, p.13-14. (Journal)  
 De Beer, D. 2010. *Architects honour top city sculptor*. Pretoria News, 8 June, p.5 (Newspaper article)
- 2009: Schriemer, R. (2009). *RESIDENCE MAGAZINE*, Nl 0309: pg 26-31 (Magazine)  
 Pappyn, D. (2009). *BELGIUM Magazine. WAWW What A Wonderful World*, October 2009: p.45 (Magazine)  
 Roux, T. 2009. *CENTENARY BUILDING, UNIVERSITY OF PRETORIA. ARCHITECTURE SOUTH AFRICA*, November-December 2009, p.36-41 (Magazine)  
 Dodd, A. 2009. *Concrete Dream - House Joubert*. Elle Decoration, no.62, Kitchens Issue 2009, p.84-91 (Magazine)  
 Bioclimatic Design for Energy-efficient buildings - van Dijk House. *Walls & Roofs in Africa*, vol.10.6, September 2009, p.24-25 (Magazine)  
 Joubert, O. 2009. *Centenary Building, University of Pretoria*. DIGEST of South African Architecture, Vol 14, p.26-27. (Magazine)  
 Joubert, O. 2009. *Centenary Building 2008*. In *10 Years + 100 buildings, Architecture in a Democratic South Africa*. Edited by Joubert, O. Capetown, Bell-Roberts Publishing. (Book)  
 Leyden, M. 2009. *Container living - Earthworld Architects*. VISI supplementary edition 2009 (Journal)  
 Van Rooyen, M (Editor). (2009). *Feature: energy efficiency. WALLS & ROOFS IN AFRICA*, Vol 10.6 September 2009: pg 24-25 (Magazine)  
 Viviers, A. 2009. *Concrete - Liquid stone with Soul*. VISI, the 2009 concrete supplement (Distributed with VISI 44) (Journal)  
 Myburgh Chemaly, J. (2009). *Amazing Space Hip Hotel - Alpine Attitude*. VISI, No. 41: pg 124-133 (Magazine)
- 2007: Winter, J. 2007. *FUSION EVOLUTION - Bodard House*. ELLE DECORATION, no.49, Winter issue 2007, p.84-91 (Magazine)  
 Author unknown. 2007. *Stem groen - Huis van Dijk*. Beeld Plus 1 August 2007, p.6 (Newspaper article)  
 Govender, S. 2007. *Tuks expands exponentially - Centenary Building*. Pretoria News, 18 April 2007, p.7 (Newspaper article)
- 2005: Author Unknown. 2005. *THE WORLD WE CREATED, Urban lung breathes new life into the community - Dorothy Nyember Par*. Built, January-February 2005, p.27-29 (Magazine)  
 Pretorius, R (Ed.) 2005. *SOUTH AFRICAN ARCHITECTS SHOW THEIR STEEL - Beukes House*. STEEL CONSTRUCTION, vol. 29, No.3, June 2005, p.19 (Magazine)
- 2003: Polack, J. 2003. *Ultimate Comfort - House van der Walt*. SOUTH AFRICAN HOME OWNER, Vol.14 No.1, January/ February 2003, p.61-65 (Magazine)  
 Venter, I. 2003. *Leef Meer, NOOI DIE VREDE IN - Braam de Villiers*. INSIG, No.182, May 2003, p.74 (Magazine)  
 Polack, J. (Jan/Feb 2003) *Ultimate Comfort*. S.A Home Owner, 66. Johannesburg, Johnic Publishing Ltd. (Magazine)  
 Schaum-Sebring, I. 2003. *Gestroop van tierlantynthjies*. Bylae tot Beeld 26 February 2003, p.1, p.4 (Newspaper article)  
 Smuts, C. 2003. *GEOMETRIE VIR DIE GEES - Huis Visser*. Bylae tot Rapport, 2 February, p.3-4 (Newspaper article)  
 Schaum Sebring, I. (2003) *Pondok to Paleis*. Beeld, 26 February 2003. Johannesburg, Naspers. (Newspaper article)
- 2002: De Beer, P. (Jan/Feb 2002) *House Coetzer Mooikloof, Pretoria*. Natural Earthbound expression. S.A. Architect. Randburg, Primedia Publishing. (Magazine)
- 1991: Nutall, J (Editor). (1991). *The M & R Des Baker awards*. Planning, No. 117: pg 36

# OUR ACHIEVEMENTS

## AWARDS





# THIS IS US THE TEAM



André



Braam



Lise



Lizzy



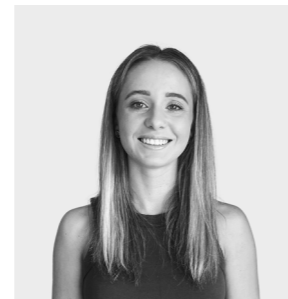
Madelaine



Cynthia



Petri



Melissa



André



Twané



Andrea



Jethro



Ruben





**Pretoria Office**  
+27(0)12 346 5400  
177 Umkomaas Road  
Ashlea Gardens

**Cape Town Office**  
+27 (0)76 282 0106  
10 Van Ryneveld Street  
Strand

“ ON THE MAKING  
OF MEANINGFUL  
THINGS ”



[www.ewarch.co.za](http://www.ewarch.co.za)