

# EARTHWORLD



# MANIFESTO

In pursuit of beauty ... a single brush stroke should suffice.  
a building should be simple; yet provocative and dynamic.

...a building should be an emotional experience  
...move you  
...technology and program guide the process  
...a building defines the inhabitant's relationship to the world itself...  
the way it's entered...  
an existential reference...

space should embrace technology, culture, style,  
nature and context

space should...  
...pay homage to the site,  
...have respect for function,  
...embrace the natural and humanmade order,  
...be harmonious with nature and climate  
...pay service to aesthetic values...

Proportion, Light, Shade, Mood, Texture, Atmosphere

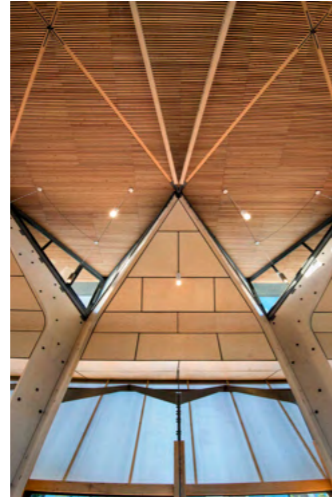


# SOPHIA GRAY MEMORIAL LECTURE & EXHIBITION

In the Making of Meaningful Things  
André Eksteen & Braam de Villiers  
earthworld architects



fourth revolution

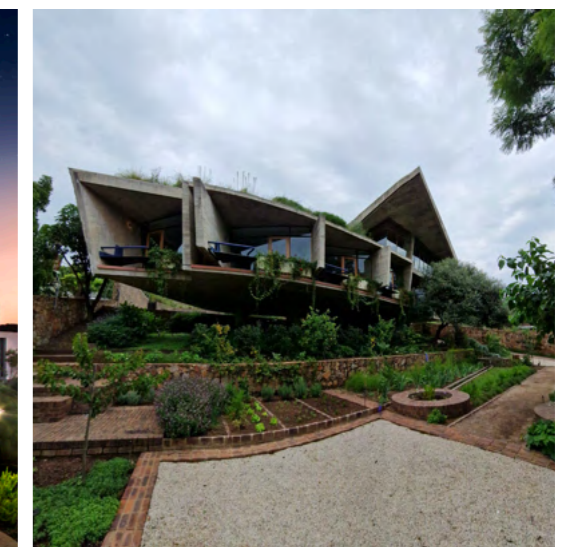
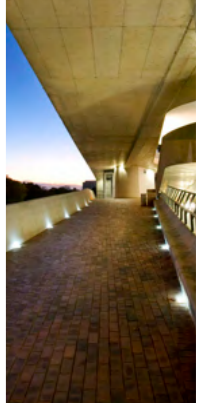
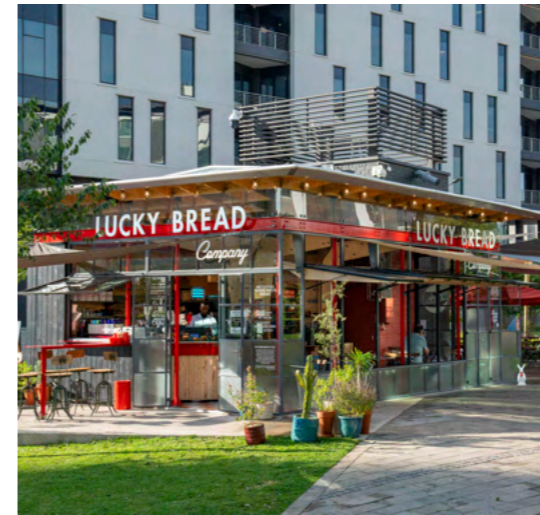


# SOPHIA GRAY MEMORIAL LECTURE & EXHIBITION

35th Recipient  
22 August 2024



Inspiring excellence, transforming lives  
through quality, impact, and care.



## **PUBLIC**

FUTURE AFRICA HUB  
FUTURE AFRICA CONFERENCE CENTER  
FUTURE AFRICA HOUSING UNITS  
FUTURE AFRICA RESEARCH COMMONS  
CENTENARY BUILDING  
UNIZULU  
BELGIUM EMBASSY  
ROYAL THAI EMBASSY  
HIGH COMMISSION OF CANADA SOLAR

**06**

## **COMMERCIAL**

I-CAT OFFICES  
LUCKY BREAD MENLYN MAINE  
LUCKY BREAD CASTLE GATE  
LUCKY BREAD VILLAGAGE  
STORTEMELK HYDRO STATION  
FOGHOUND INTERACTIVE  
TRIBECA COFFEE FACTORY  
LUCKY BREAD FACTORY COMPLEX  
TRIBECA FACTORY TRADE MODEL 12  
PLYWOOD OFFICE  
INOAR  
KO SPAZA

**38**

## **RESIDENTIAL**

CONCRETE HOUSE  
WATERFALL HOUSE 1  
BOSVELD FARM HOUSE  
PLYWOOD HOUSE  
ROWAN STREET  
COURTYARD HOUSE  
FLOATING CONCRETE BOX  
HIGHVELD HOUSE  
BLOCK HOUSE  
WATERFALL HOUSE 2  
BRICK VAULT HOUSE  
FLOATING TIMBER BOX  
GROENKLOOF HOUSE  
HOUSE Z  
20TH CENTURY MODERNIST PRESERVATION  
BUSHVELD HOUSE  
BUSHVELD STEEL HOUSE  
WALL STREET RESIDENTIAL  
FLOATING CONCRETE ROOF  
THAI RESIDENCE  
STRUBENKOP SANCTUARY  
CSCC DREAM HOUSE  
HOUSE ALTO

**70**

## **PUBLICATIONS**

MAGAZINES, NEWSPAPERS, ARTICLES AND BOOKS

**130**

## **RECOGNITION**

AWARDS  
THE TEAM

**134**

The brief called for the design of an environment that would facilitate and enhance transdisciplinary research within the African context. The facility should be a place where collective research is done with a strong focus on science leadership development. The Hub is a space where the whole campus can congregate, eat, and share ideas.

A complete plywood structural portal system - designed in detail and modeled three-dimensionally in the architect's offices, and then sent to CNC (Computer Numerical Control) Machines for cutting and manufacturing of site components, and then rapidly assembled on-site.

Future Africa is to provide an integrated live-work environment for postdoctoral students from all cultures and backgrounds, fostering fellowship, understanding, and collaboration among the vast diversity of cultures and disciplines on our continent.

The facility consists of 280 one, two, and three-bedroom living units with four communal living and cooking areas and a creche. Additionally, it includes a Central Hall (Future Africa Hub), a Research Commons, and a Conference Facility (250-seater auditorium with two 50-seater multi-purpose rooms and six break-away rooms, all linked to the auditorium and doubling up as translation booths).

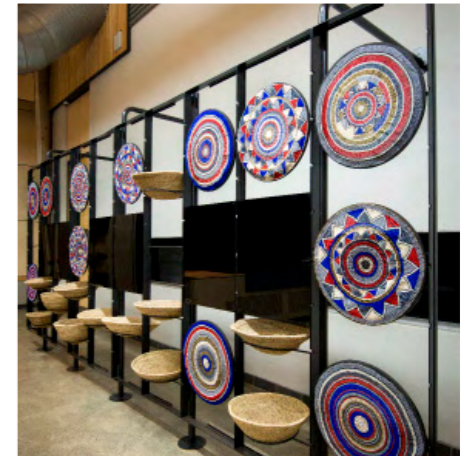
The environment resulting from the development must foster community, ownership, participation, and thought integration through spatial transparency, democracy, and choice. The conventional approach at universities calls for clusters of buildings with some shared facilities central to the residential units, which still creates islands and isolation. The reimagining of this typology called for centralized spaces for interaction, which would facilitate collaboration, cultural interaction, and friendship. Central to the collaboration/communal facilities are food and its preparation. With the vast cultural diversity on our continent, the idea of sharing thoughts around "dinner tables" was at the core of the organization. The landscape design also formed part of the system by reintroducing 56 orphan crops and allowing foraging to explore alternative cuisines and creative interaction around new tastes, textures, and colours.

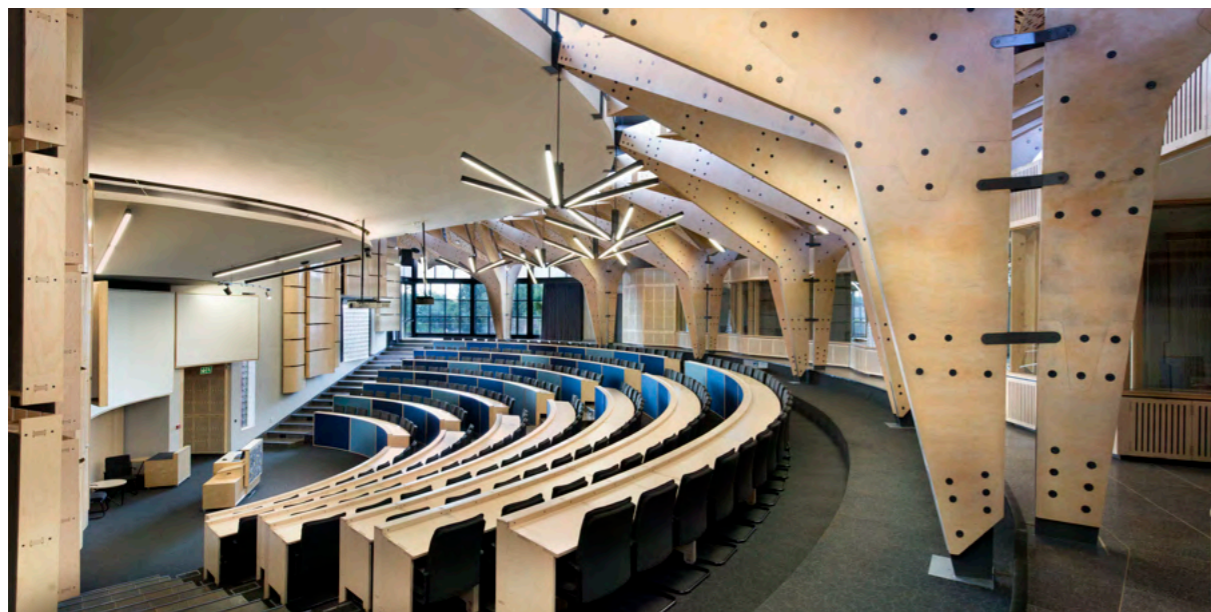
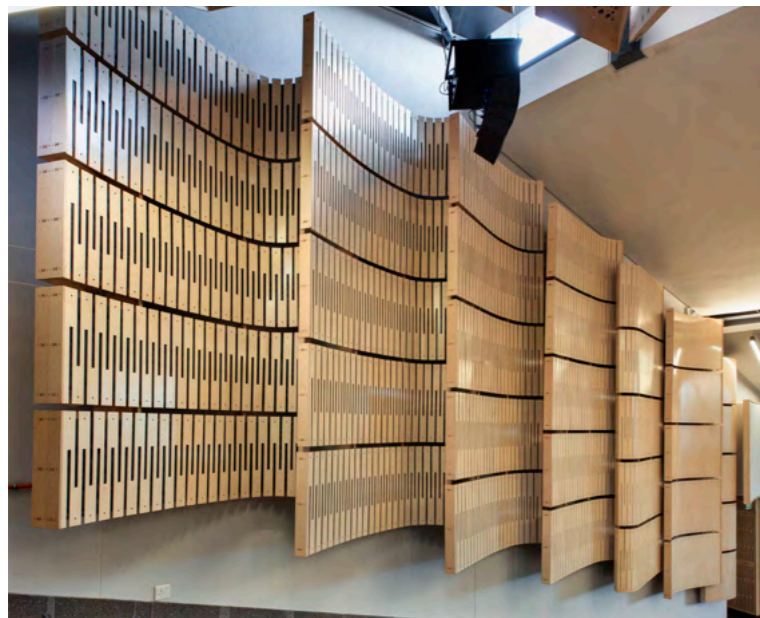
---

# FUTURE AFRICA HUB

PRETORIA







The Future Africa Conference Facility consists of a 250-seater auditorium, two 50-seater multi-purpose rooms, and six break-away rooms linked to the auditorium, also doubling up as translation booths. A complete plywood portal structural system was designed in detail and modeled three-dimensionally in the architect's offices. It was then sent to CNC (computer numerical control) machines for cutting and manufacturing on-site components, which were rapidly assembled on site. The extensive use of timber in the entire building was an imperative sustainable strategy.



# FUTURE AFRICA CONFERENCE CENTER

PRETORIA  
Earthworld



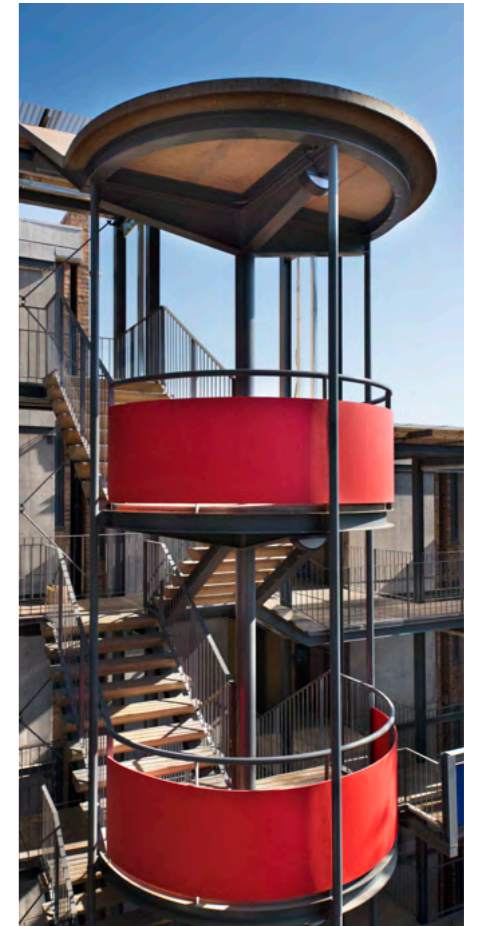
# FUTURE AFRICA HOUSING UNITS

PRETORIA

Spatial organization went against the norm for hostel/communal living environments, where isolated blocks with either 8 or 16 rooms are organized alongside small kitchen and living areas. Although the living units are comfortable and allow for private contemplative activity, the circulation is through the communal living areas, which also house communal kitchens.

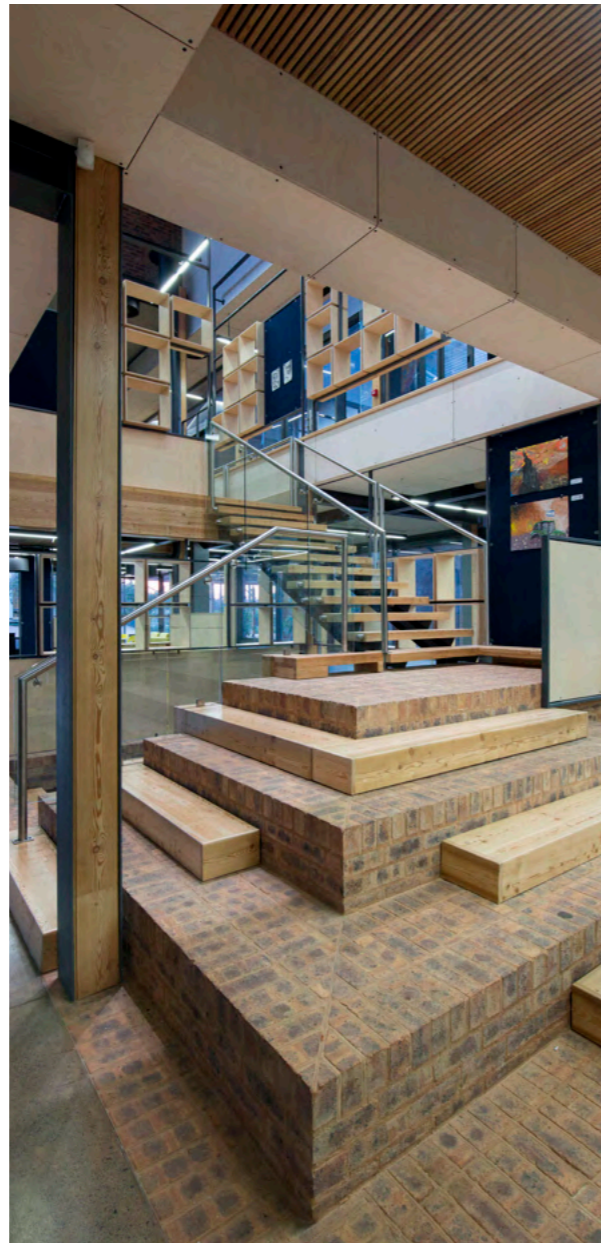
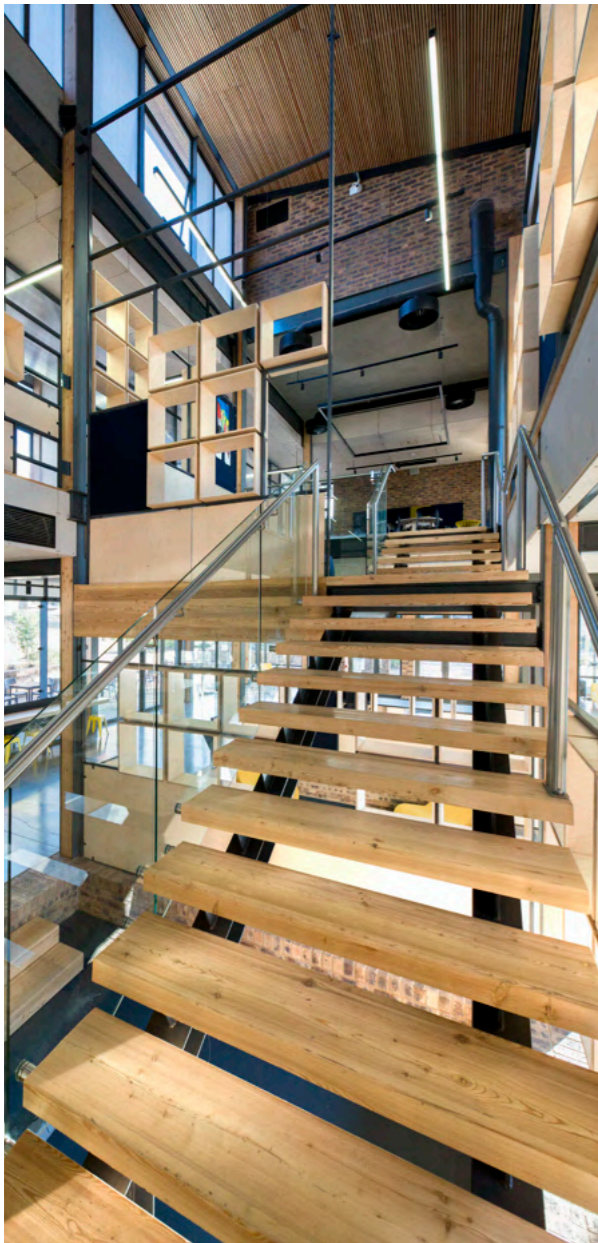
The housing complex consists of 280 one, two, and three-bedroom living units. The electronic models were shared with the precast manufacturer. Precast concrete elements were manufactured 11 km off-site and then brought to the site for on-site assembly with cranes.

Public Architecture



Earthworld



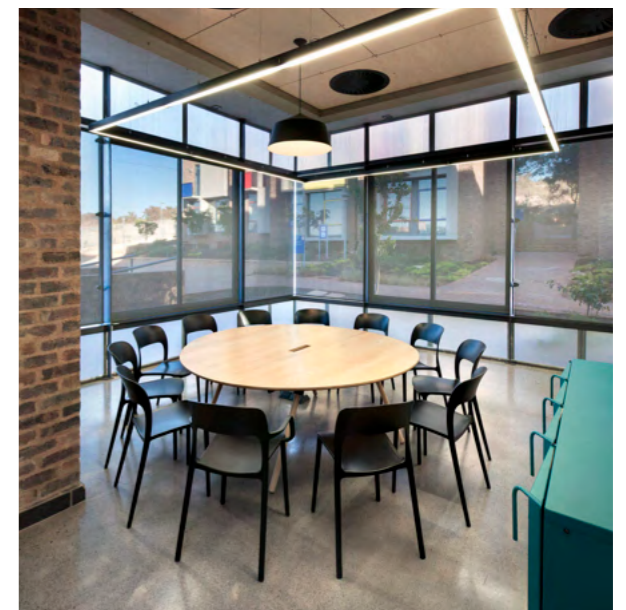


FUTURE AFRICA  
RESEARCH  
COMMONS

PRETORIA

Earth

17

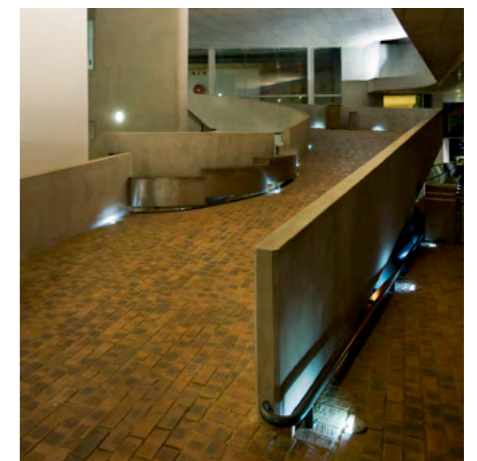
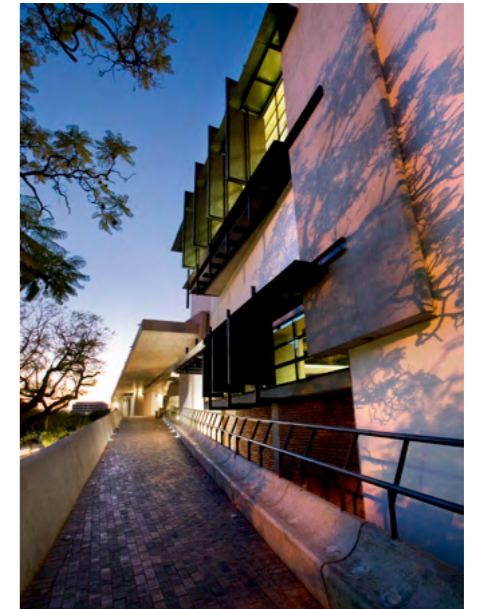


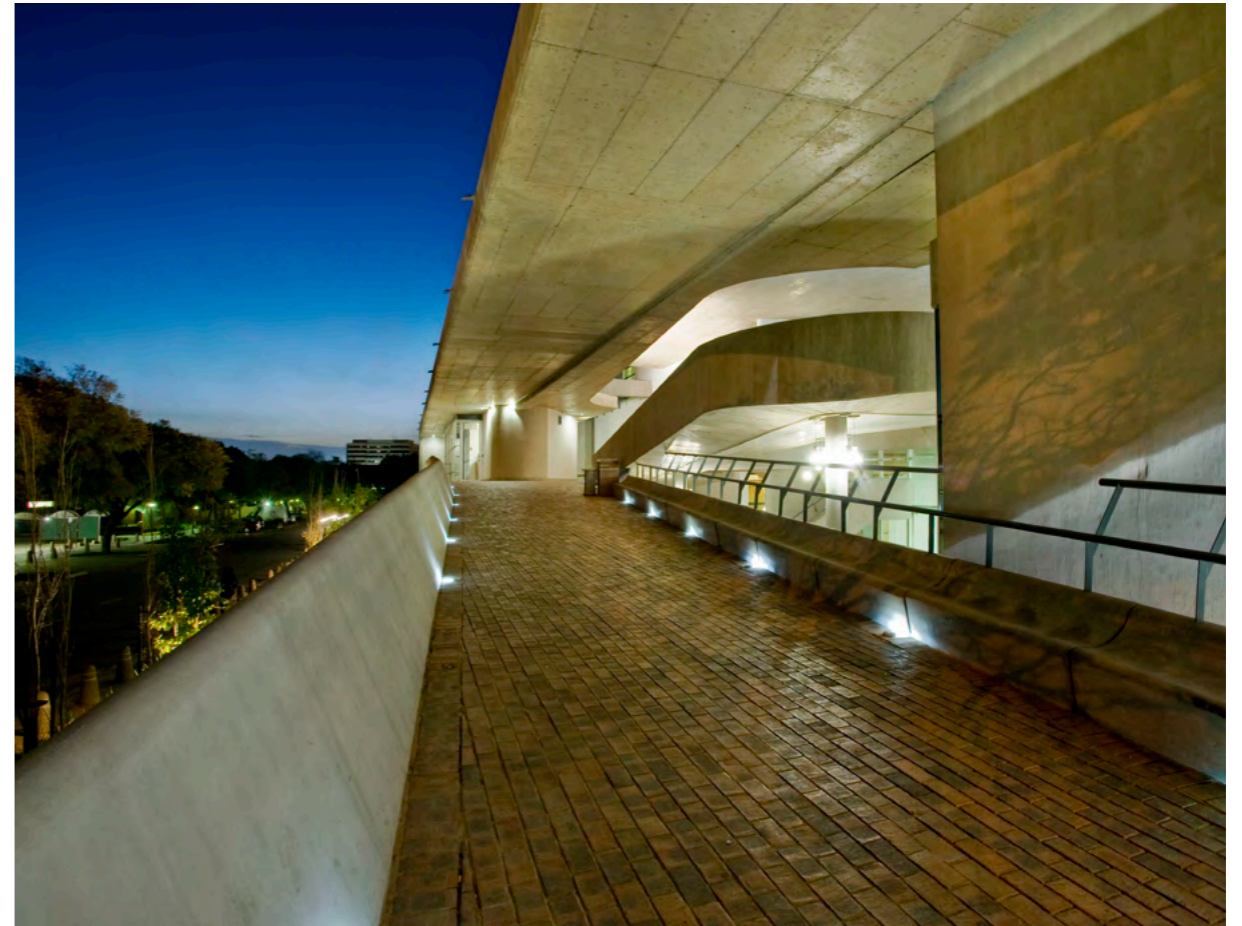
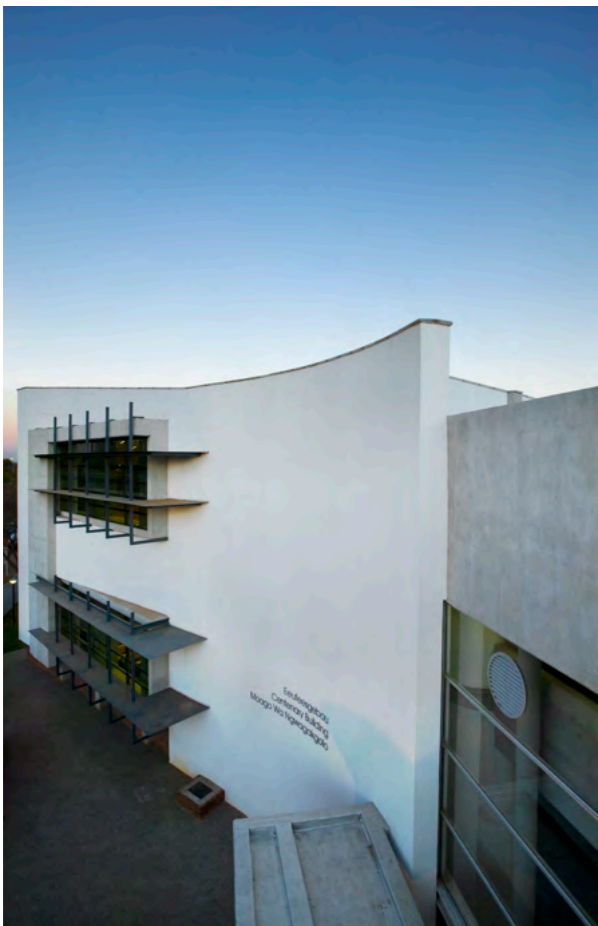
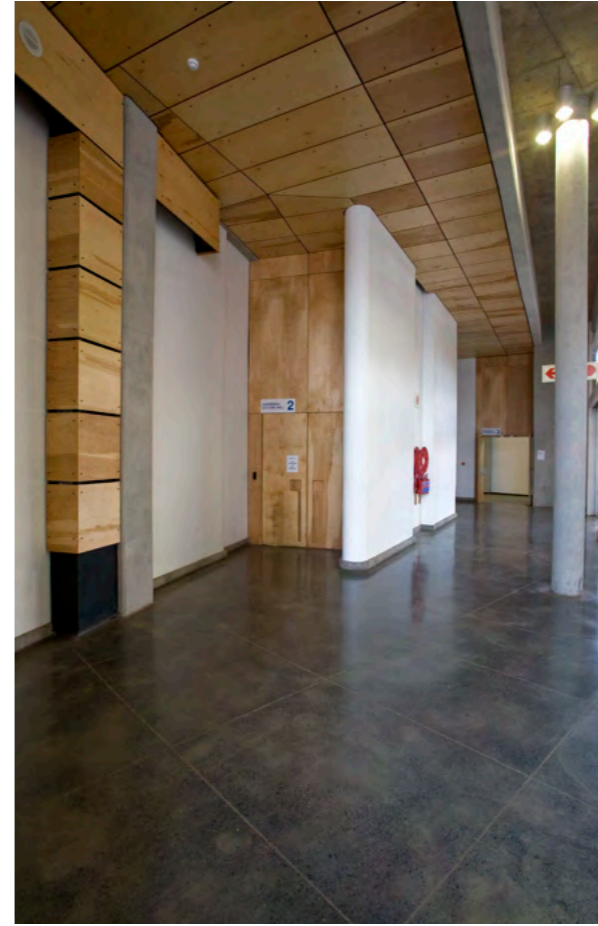
UNIVERSITY OF PRETORIA

# CENTENARY BUILDING

On a micro scale, the Centenary Building engages with its neighbors by consciously responding to their diversity in scale, proportion, and finishes. It overtly acknowledges the adjacent neo-modern Law Faculty Building and continues its deliberate street front and axes. Furthermore, the Centenary Building gives equal prominence to internal and external space, with much of the circulation occurring on the exterior – a gesture purposely establishing a public interface between the complex and its surroundings. The Centenary Building also

reacts to existing pedestrian patterns, resulting in different circulation routes and means of access, which substantially contribute to its formal modulation. On a macro scale, the building draws inspiration from other celebrated structures in its proximity, particularly the sculptural modernist examples by Jooste and Sandrock. The ultimate merit of the Centenary Building, however, lies in the creation of a micro-regionalism through the perceptive distillation of a design idiom specific to the University of Pretoria campus.





RICHARDS BAY

# UNIZULU

The University of Zululand's Richards Bay Campus is located in an urban coastal town, positioned at the edge of the urban-suburban fabric and forming a strong connection to the natural landscape of Richards Bay. The new Engineering Building is envisioned as a landmark and urban anchor for both the campus and the surrounding community. Due to the scale of the program, the building has been designed modularly, allowing phased construction over several years. The complex includes lecture halls, offices, and training laboratories, creating a vibrant environment where learning, collaboration, and innovation intersect. Importantly, the building is not only a space for education but also a catalyst for community engagement—both during construction and in its final form. Earthworld Architects proposes an alternative

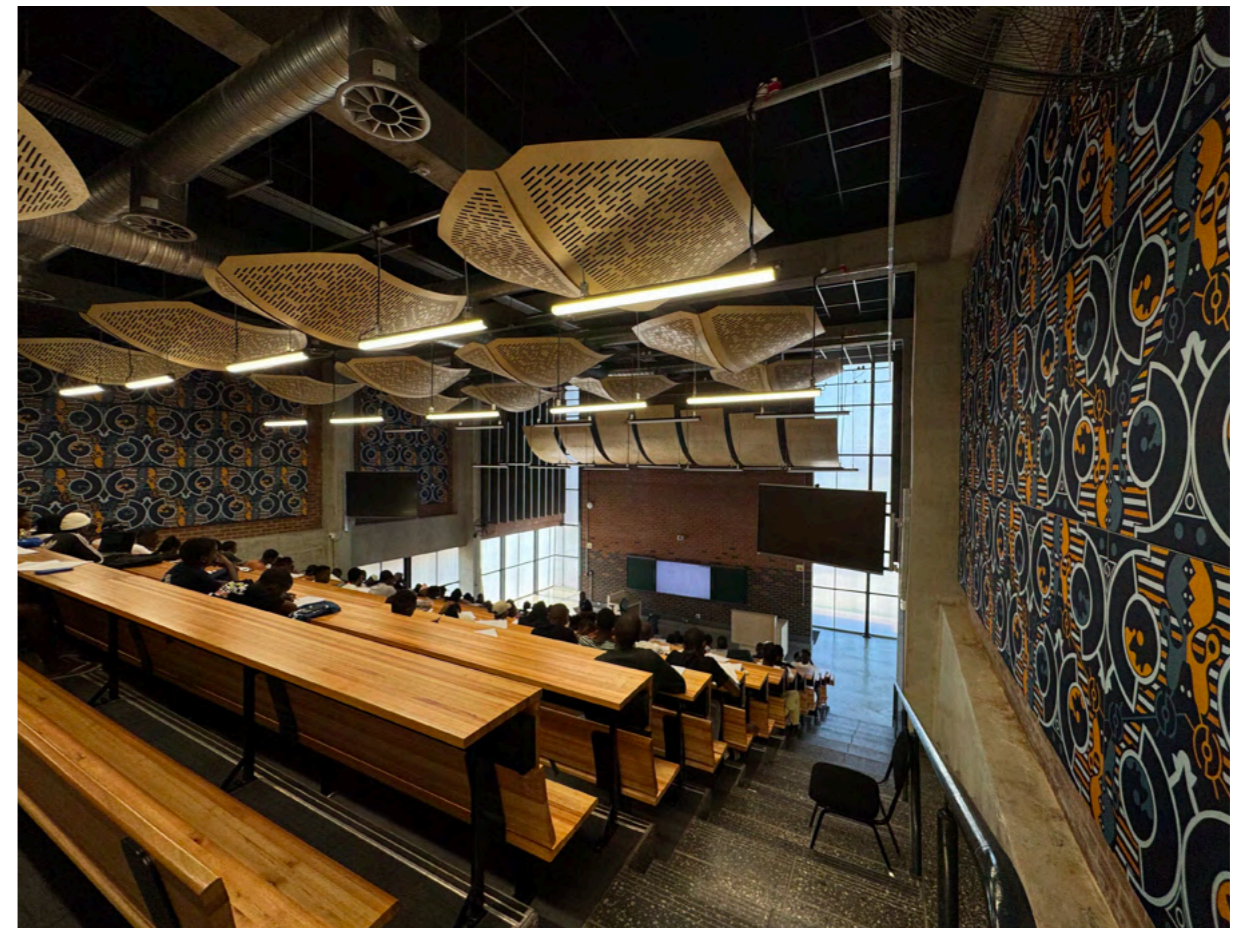
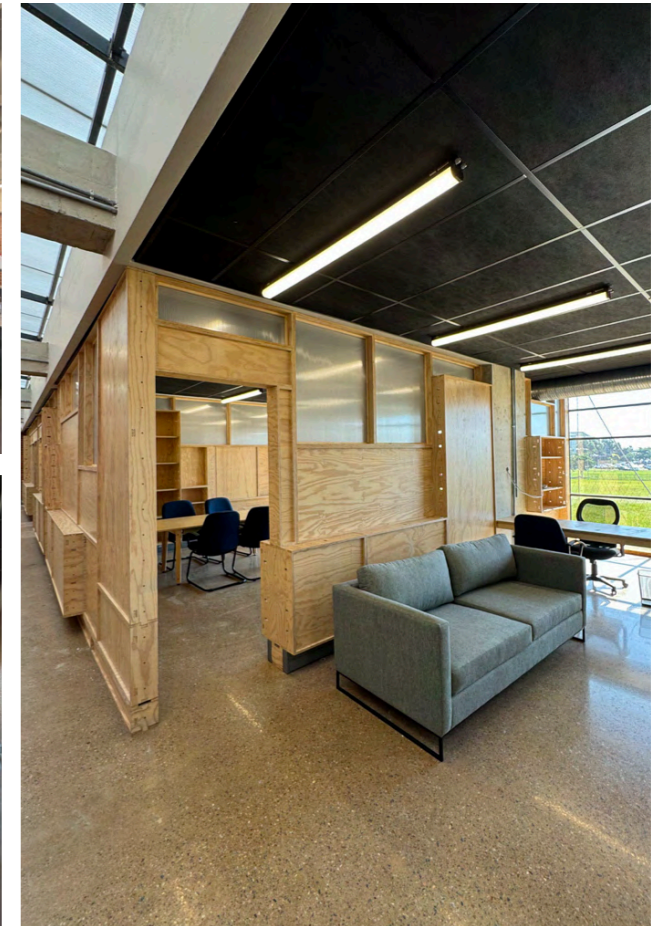
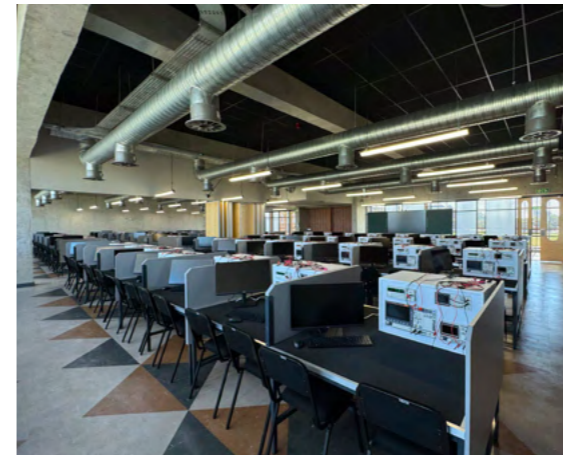
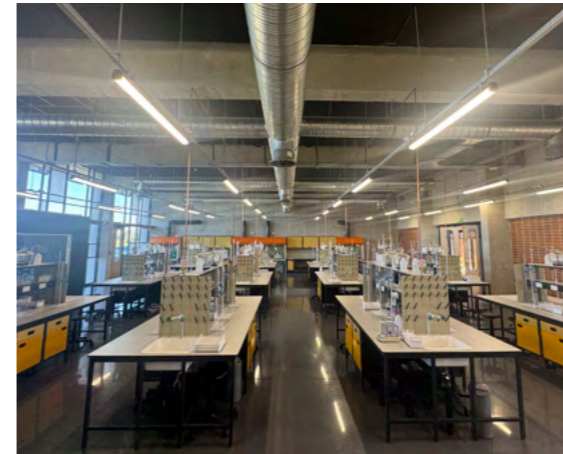
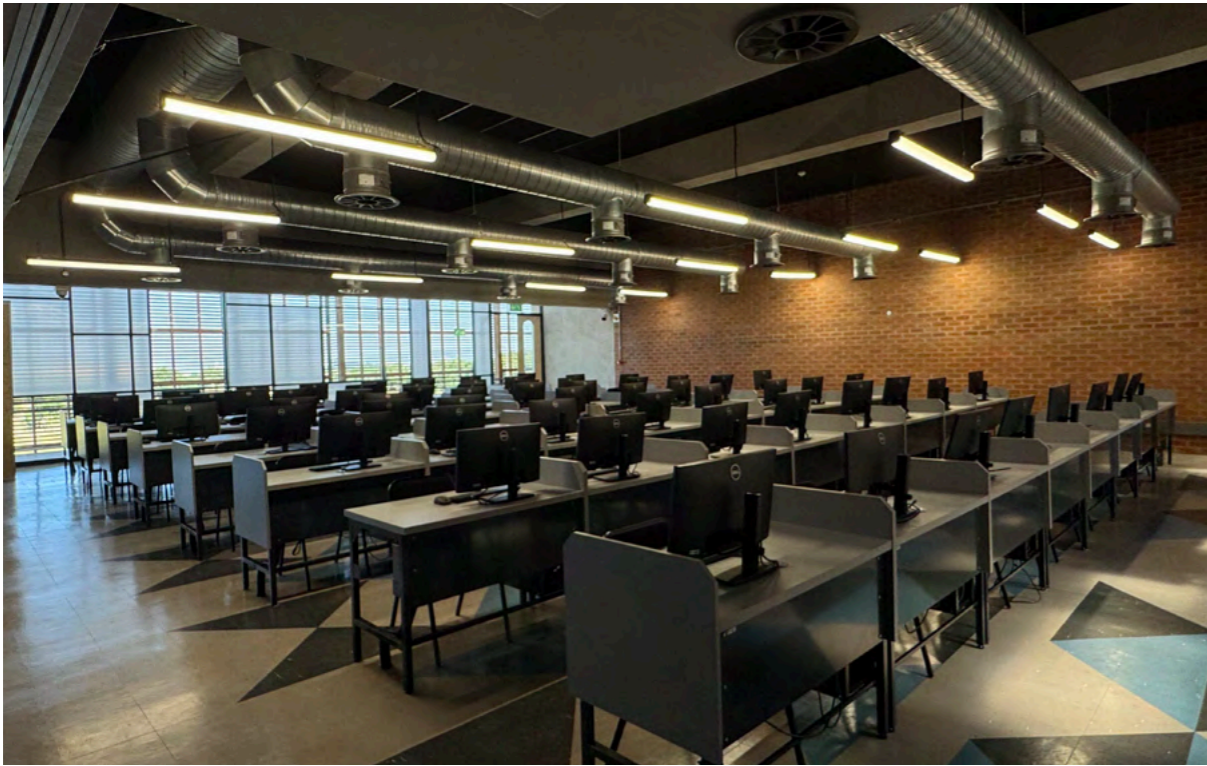
economic model that integrates community development into the capital project itself. This strategy focuses on sustainable growth through local material use, skill development, and inclusive participation. Micro-Factories and Local Empowerment: Tertiary components are manufactured by local subcontractors through micro-factories established within the community. These factories: Use local materials, produce computer-aided design components for efficient assembly, and Focus on single-component production for streamlined operations. A mentorship and training program led by architects, contractors, and graduates—supports factory owners in operations and development, ensuring long-term sustainability beyond the project's completion.

Public Architecture



Earthworld

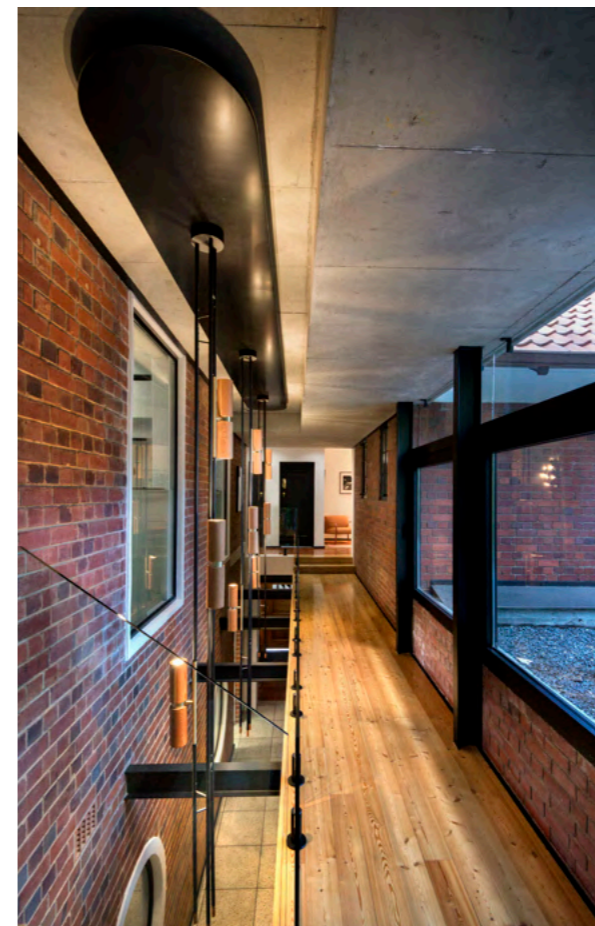
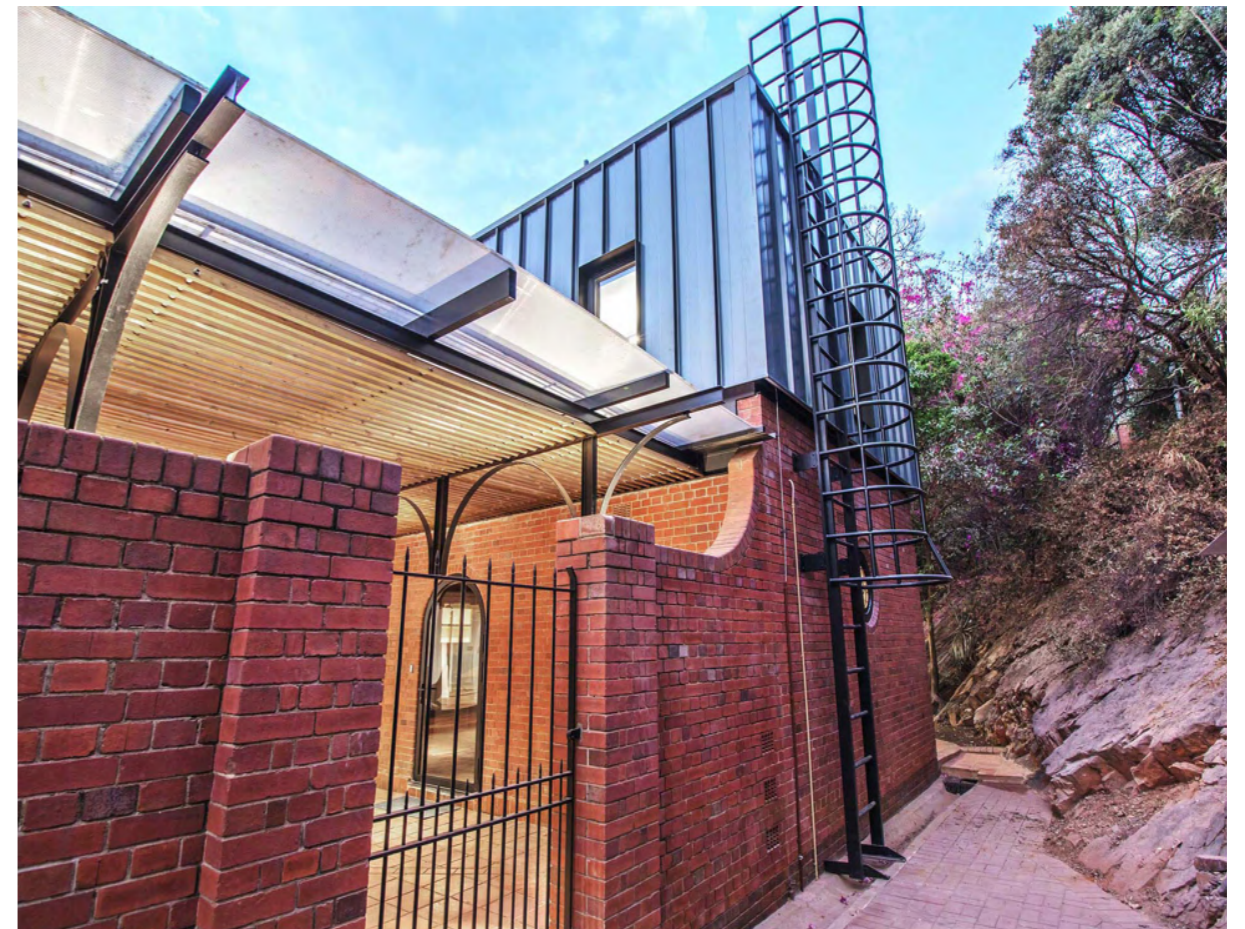
25

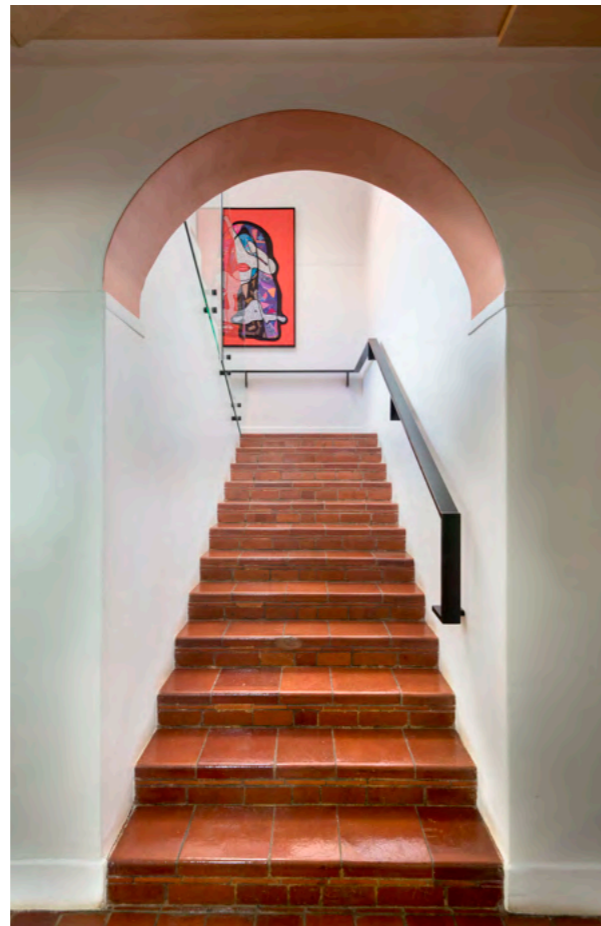


MUCKLENEUK

# BELGIUM EMBASSY

This restoration of the historical, John Kirkness – old mayor of Pretoria's, house called for specific and careful intervention. Requiring heavy security, new IT infrastructure, efficient climate control and contemporary working spaces – all while remaining sensitive to the historical house. The ornamental ironmongery was kept in-tact and restored. Significantly, the Kirkness bricks had careful consideration preserve the beauty of the brickwork. Where existing walls were removed a clear indication on the floor was made with hand-made tiles to indicate their original position.



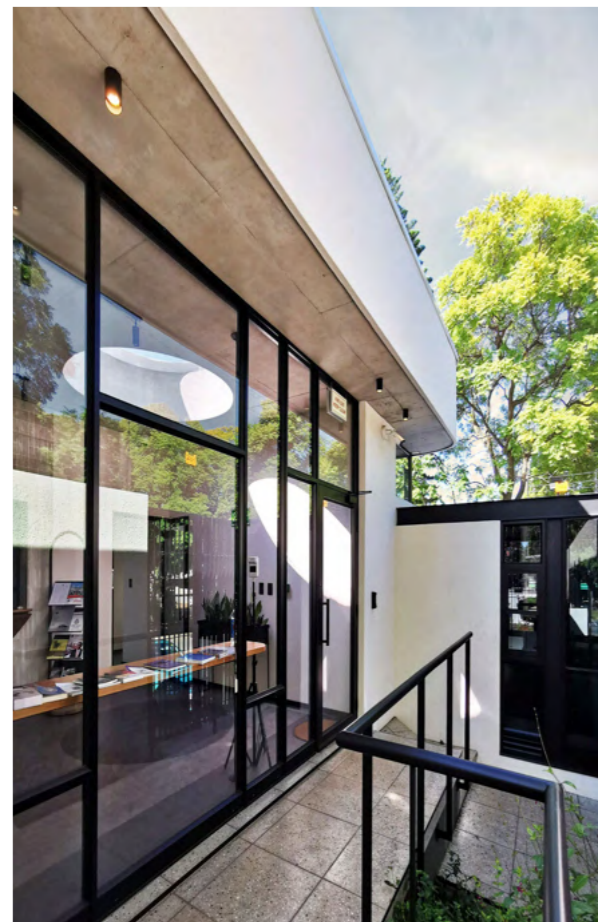


PRETORIA

## ROYAL THAI EMBASSY

The aristocratic dwelling was built at the beginning of the 20th century. The original features include a grand timber staircase, numerous ornate fireplaces, built-in classical joinery, and a grand room with exposed detailed trusses. The design approach was to peel back the layers of add-ons and identify, preserve, and restore precious heritage fabric, such as fireplaces, brass ironmongery, picture rails, doors, louvers, joinery, and timber floors. The new addition's aesthetic is distinctively modern, showcasing the juxtaposition between the new and the old.

The main objective was to modernize the entire building from an energy-efficiency and building-services perspective, introducing and upgrading artificial lighting, mechanical ventilation, and IT infrastructure. A custom timber tree pergola was added to the existing main courtyard, allowing for additional public space that can be used year-round. We closely collaborated with the clients, incorporating symbolic Thai patterns onto the hanging panels to create a sense of ownership for the building's current inhabitants. The project's end result is a sensitive fusion of opposites: a marriage between old and new, between an old home and a contemporary office, becoming a flagship representation of what a 21st-century embassy in South Africa should embody.







# HIGH COMMISSION OF CANADA SOLAR

PRETORIA

Earthworld Architects has undertaken a wide range of engineering-integrated architectural projects, with a strong focus on sustainable energy solutions, including solar photovoltaic (PV) systems and hydroelectric power plants. A key philosophy in their infrastructure work is the seamless integration of engineering and architectural design. This approach ensures that technical systems are not merely functional but also contribute to a cohesive and inclusive spatial experience—avoiding the appearance of being overly “engineered.” One such project is a microgrid system designed for an embassy, which integrates new photovoltaic panels and inverters with the existing power infrastructure, including backup generators. To house the solar panels, a series of steel carport roofs were designed. These structures take the form of stylized, tree-like steel frames, offering both structural efficiency and architectural expression. The result is a solar installation that is not only functional but also visually symbolic of growth, sustainability, and innovation.





PRETORIA EAST

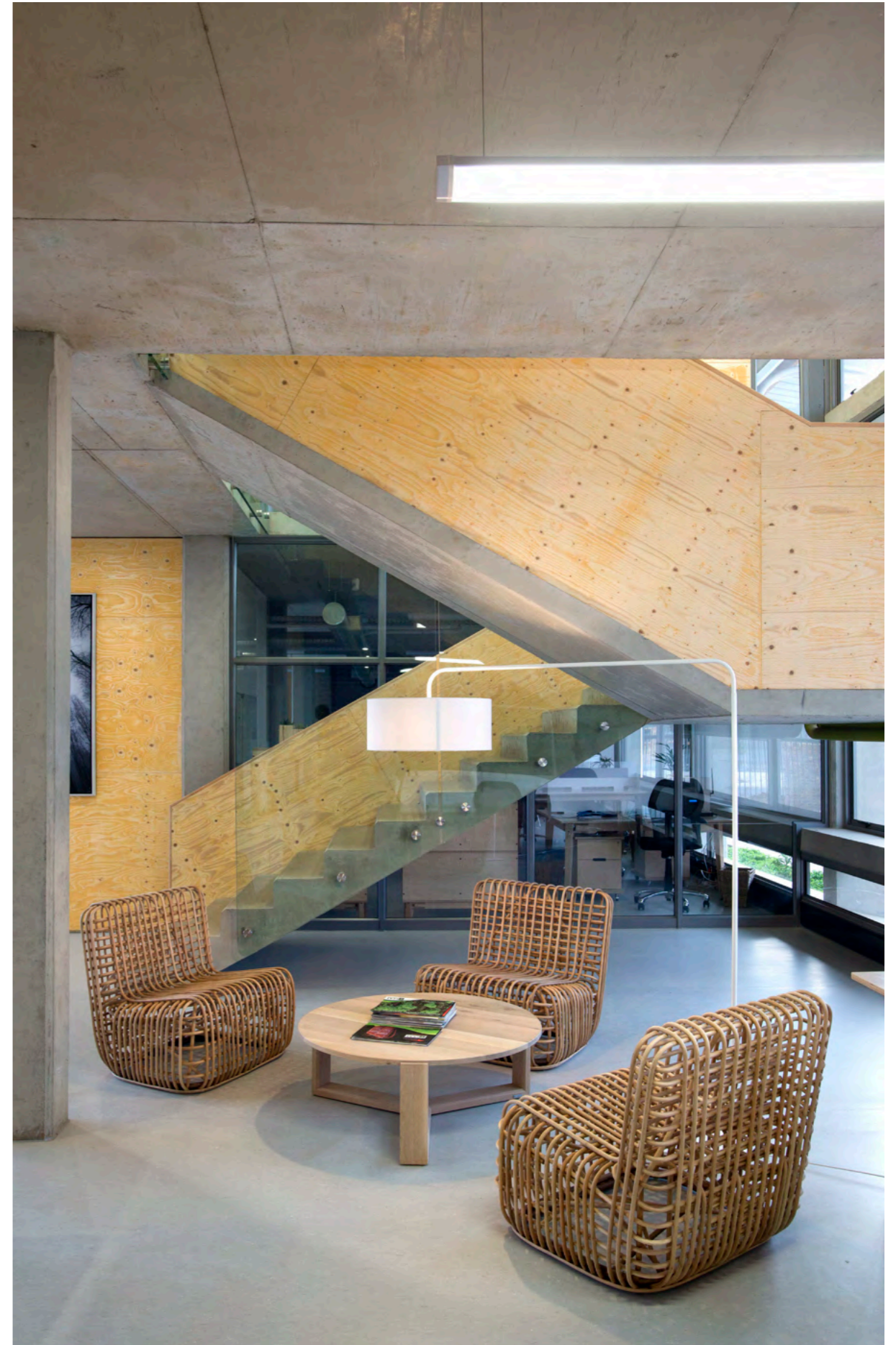
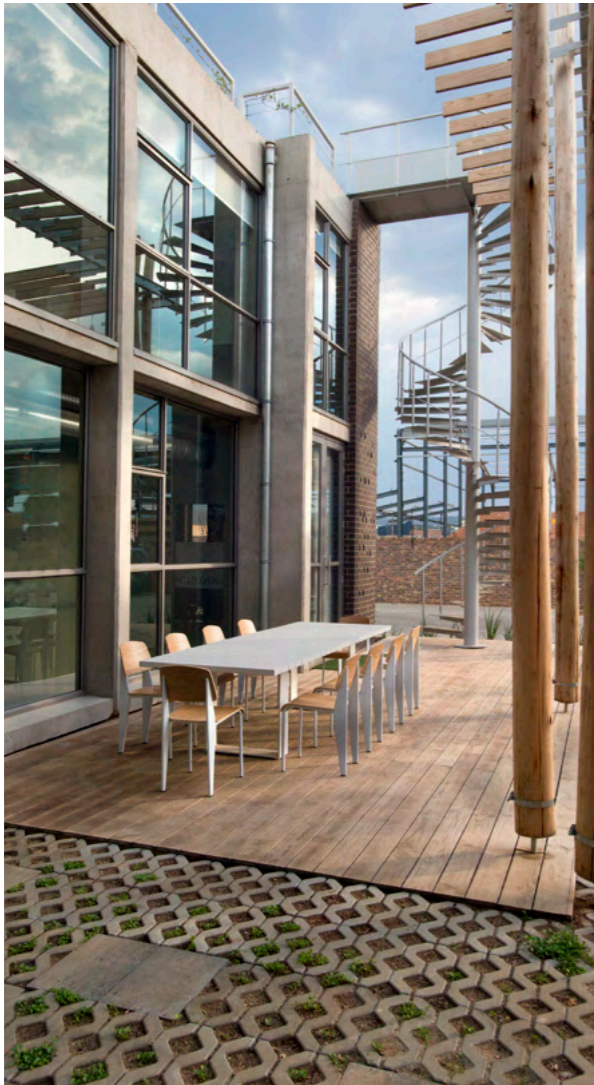
## I-CAT OFFICES

---

In essence, a building should be sustainable on all three levels: ecological, social, and economic. The brief from the client required a building that could showcase sustainability concepts - the values that I-Cat embraces. The design of I-CAT's new offices and warehouse aims to perform on all these levels of sustainability. Passive design systems such as orientation, shading, natural ventilation, and lighting were carefully considered to create a strong foundation for the building's sustainability. These systems ensure a broader comfort zone for users. The building's envelope is oriented directly to the north, and a courtyard was created on the southern side to further moderate the climate during summer. The northern overhang allows for winter heat gain and summer shading, while the southern facade permits ample natural light.

A grid-tied photovoltaic system was designed to meet the day-to-day energy demands of the building. Rainwater from the roofs is collected and stored in a large underground water tank buried in the courtyard. All water is pumped from the tanks to a water filtration plant located in the warehouse. The design attempts to minimize building maintenance, and natural materials were prioritized. A monolithic face brick wall creates a bold street facade that is broken up with a punched steel window frame, further enhanced by special bricks that form an integrated pattern in the brick facade.

A horizontal concrete box frames the glazing on the northern facade, serving as a light shelf, and also protrudes inward to act as desk shelving. A timber pole and thermo-treated pine pergola structure float above the southern courtyard, which is planted with grass blocks and low water-usage plants, and further enriched with timber decks and a linear koi pond. The fever trees planted in the courtyard will eventually grow through the pergola structure. A spiral staircase extends from here to the roof garden, providing an aerial overview of the pergola and courtyard.

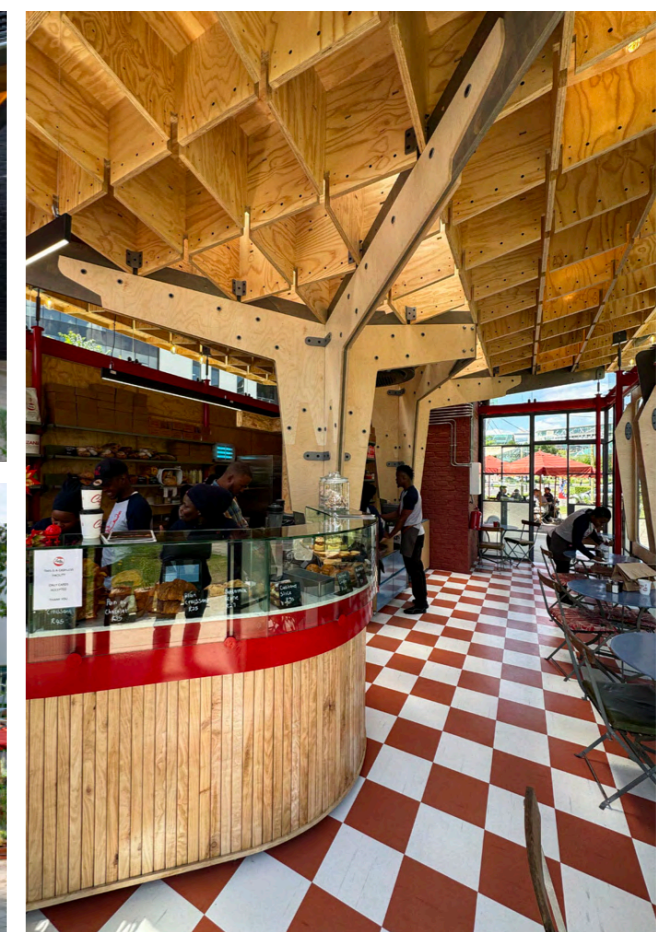
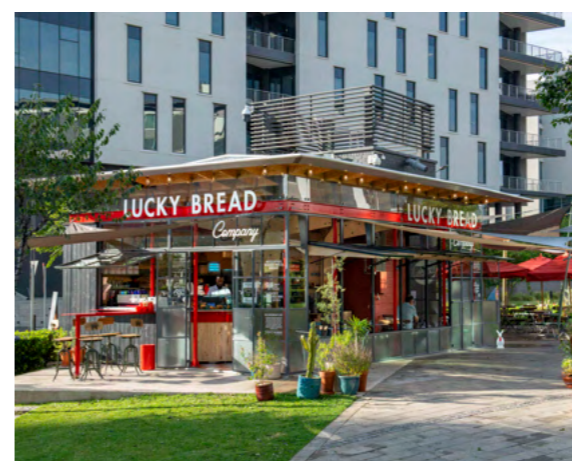




# LUCKY BREAD MENLYN MAINE

PRETORIA

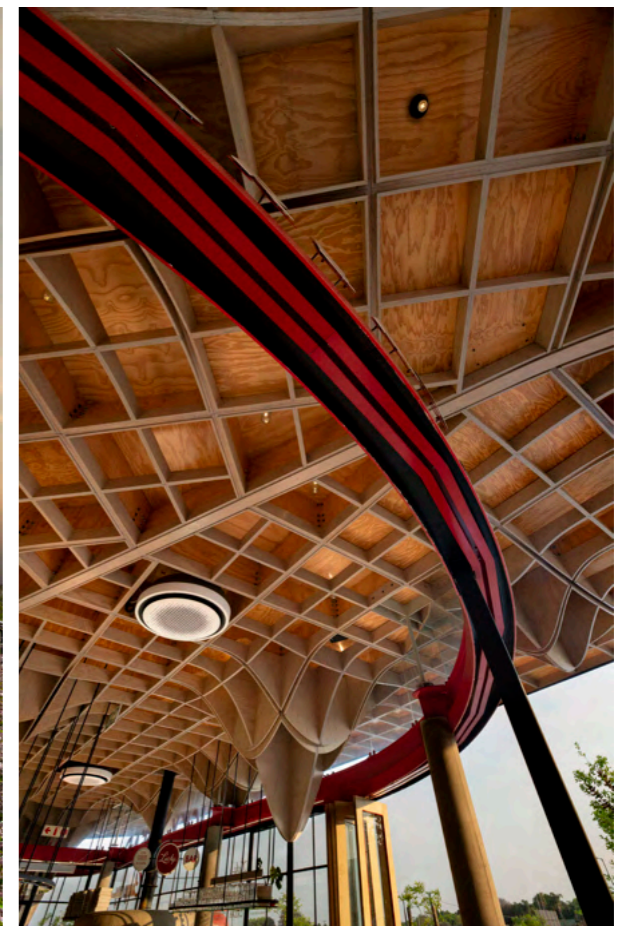
Menlyn Maine Developers required a small coffee shop and shaded outdoor seating. The structure needed to be semi-permanent for potential removal. Earthworld aimed to create a simpler and more efficient building system for small-scale construction. Our goal was to develop a system that anyone could use to build homes, shops, or other structures with basic tools and minimal labour. A complete plywood and steel structural system was designed in detail, modelled in 3D, and sent to CNC machines for cutting and manufacturing off-site into components, which were then rapidly assembled on-site.

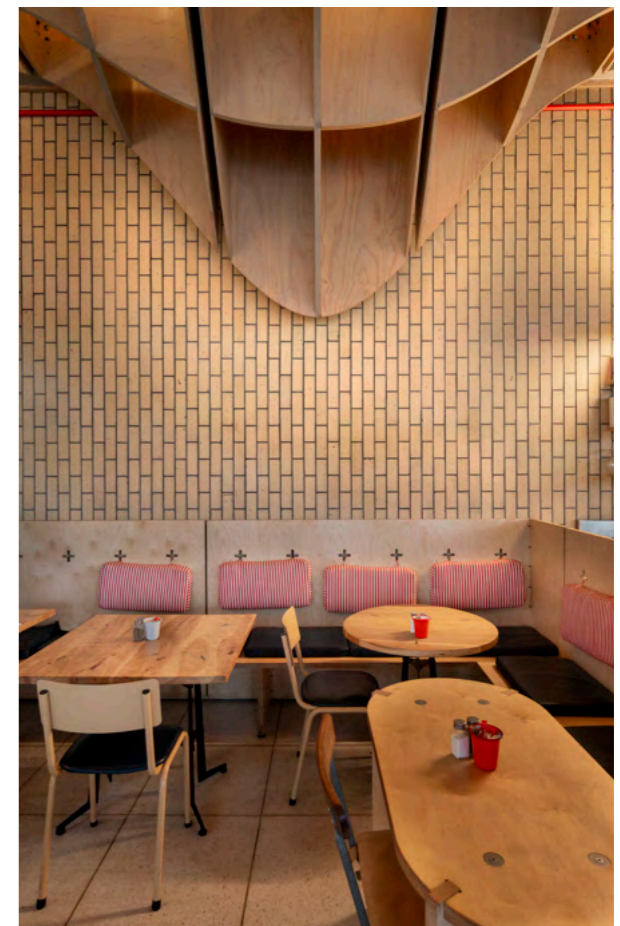
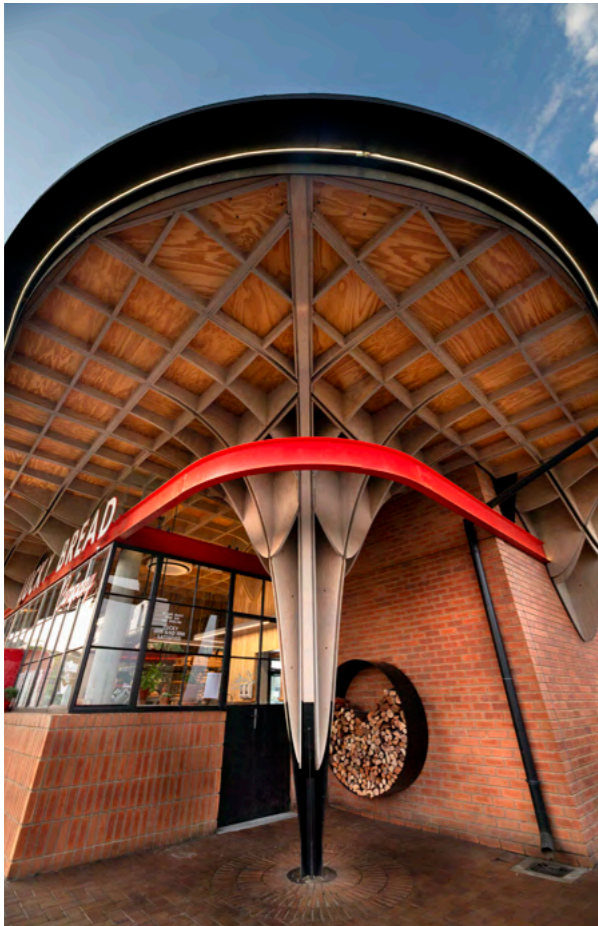


PRETORIA

# LUCKY BREAD CASTLE GATE

Developer Atterbury Property reached out to Earthworld to activate this smaller space in a larger shopping mall development. The small pavilion is nestled between larger commercial boxes and houses a coffee shop / bakery and an interior design shop. A complete plywood and steel structural system – designed in detail and modelled 3-dimensionally in the architect's office – then sent to CNC (computer numerical control) Machines for cutting and manufacturing of site in components and then rapidly assembled on site.





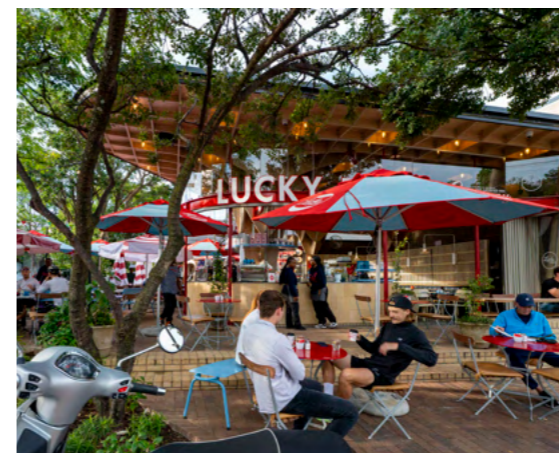
# LUCKY BREAD VILLAGE

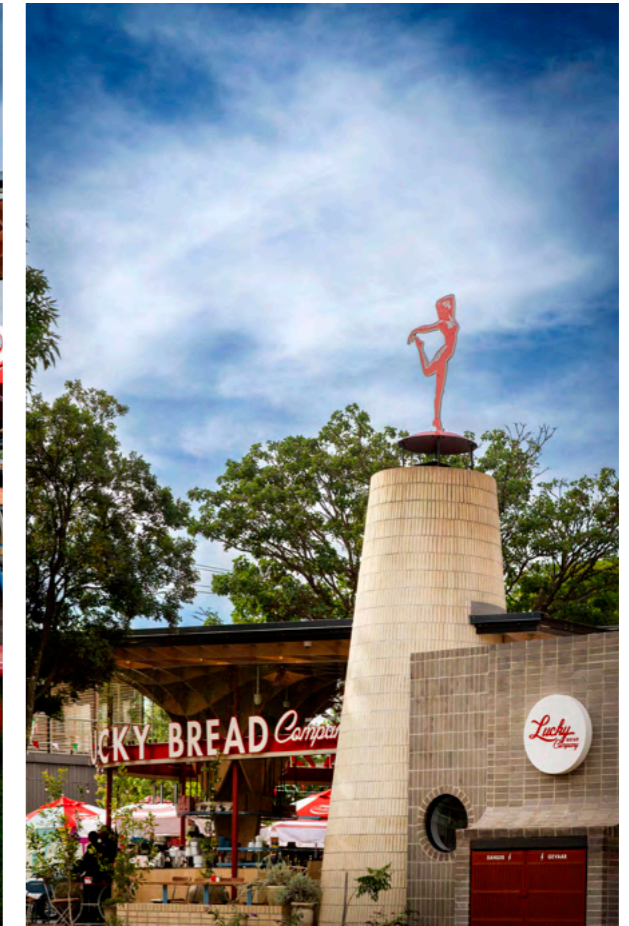
HAZELWOOD

Lucky Bread Village offered a rare opportunity to design a corner pavilion within a vibrant suburban streetscape. Over the past decade, this area in Pretoria has evolved organically, with former residential houses transformed into businesses and restaurants. The result is a collection of intimate one- and two-storey buildings forming what is now known as the Pretoria East Village—simply, the Village. In response, Atterbury Properties embraced diversity by commissioning different architects and styles for each stand, creating a rich, eclectic urban environment.

Positioned on a prominent corner, Lucky Bread emerges as an urban pavilion. The design prioritises openness along both street edges, with a floating roof providing shade and comfort. Generous portions of the site are given back to the public realm, blurring the line between building and street. On fair-weather days, the fully operable shopfront dissolves the boundary between inside and out, allowing the space to extend into the street. The Lucky Bread brand is expressed through a sculptural plywood roof, creating a strong architectural identity. Its fully 3D-modelled plywood and steel structure was CNC-cut, prefabricated, and efficiently assembled on site. Custom steel elements further enhance the building's craft and detail.

A restrained palette of creams and blues complements Lucky Bread's bold red, reinforcing the brand while enriching the architecture. The result is a finely tuned design, shaped by its urban context and the customer experience.



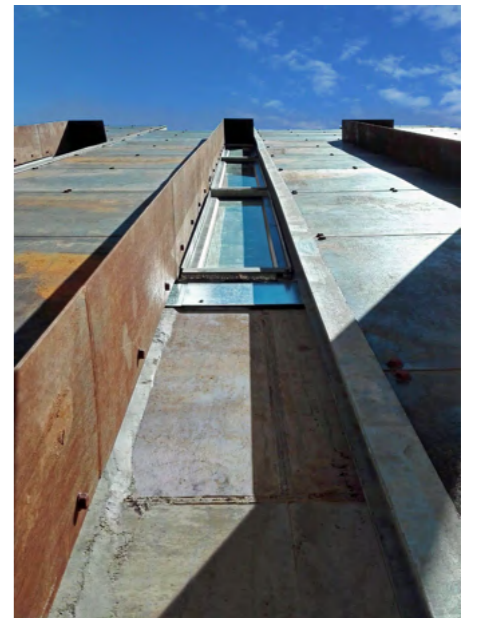


CLARENS

# STORTEMELK HYDRO STATION

Situated in the rolling foothills of the Drakensberg Mountains, along the banks of the Ash River, the Stortemelk Hydroelectric Plant celebrates the importance it holds in producing clean, sustainable energy in South Africa. Comprised of several building skins, the design approach is intended to create different experiences of the plant from the exterior and from within the interior. Clad in Corten Steel and Polycarbonate sheeting, the architecture is intended to blend with its landscape, while still allowing good quality light to penetrate the plant's interior. Articulating the façade with slotted window openings allows for the perception that the electrical production of the plant is spilling out into the surrounding environment, creating a beacon in the landscape.

Upon approaching the site, the Corten Sheeting reaches up into the skyline, announcing the building and the adjacent river from a distance. The lightness of the steel construction is then contrasted by the more stereotomic design of the rest of the plant, which protrudes from the riverbank as a plinth.



The design of a coffee shop and coffee machine showroom was achieved using shipping containers as the building blocks. The building was placed on the street edge to create a public interface with the neglected streetscape. On the opposite side of the street façade, a courtyard is formed through the vertical stacking and placing of containers. The containers are stacked in such a manner that the cutting up and alterations of containers are minimized. The two containers that form the showroom on the first floor are placed and cantilevered from the ground floor containers to form the coffee shop below. Clerestory windows allow natural light between the two first-story containers and act as a space filler between containers.



MIDRAND

**FOGHOUND  
INTERACTIVE**



MIDRAND

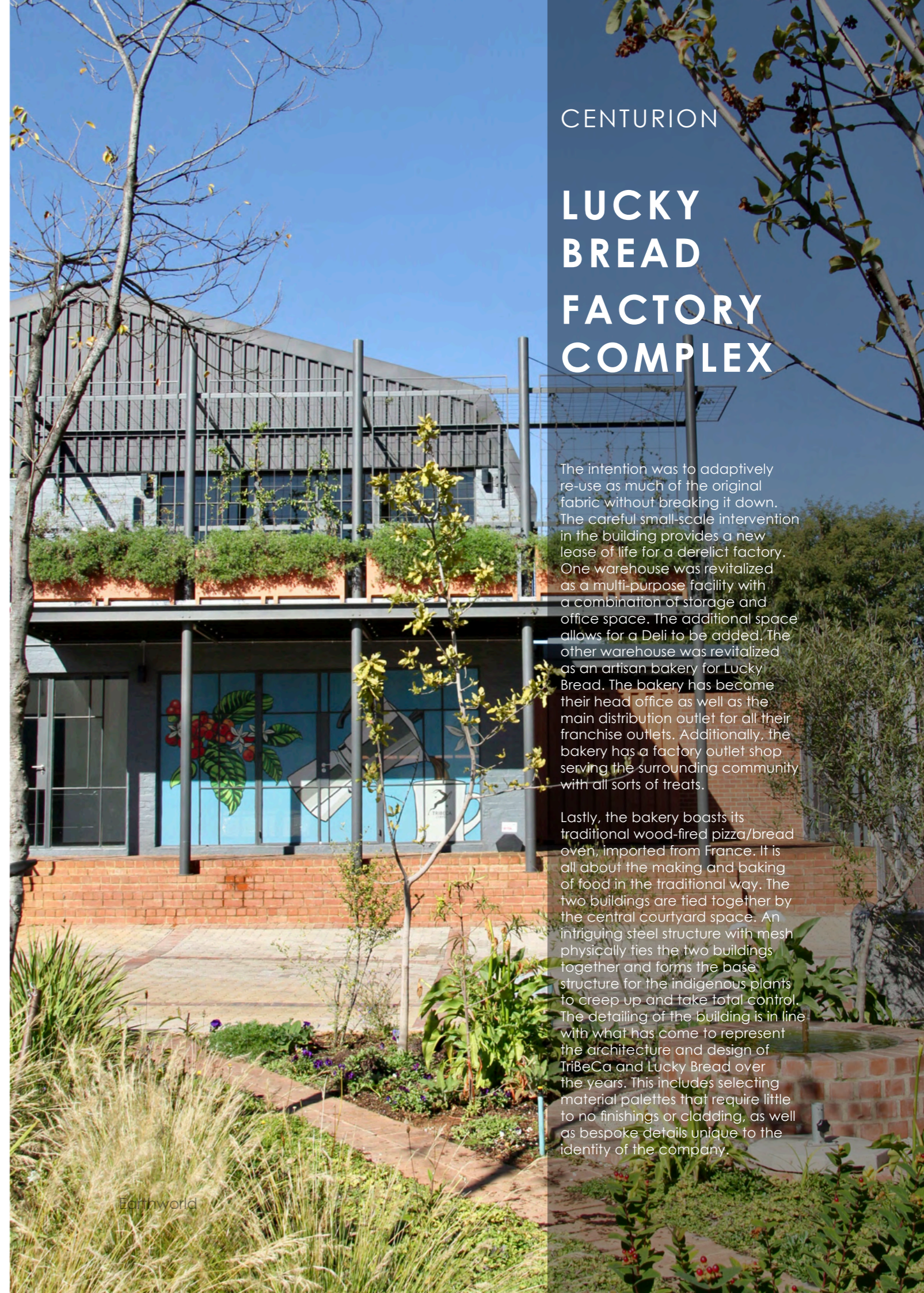
# TRIBECA COFFEE FACTORY

A new facility for TriBeCa Company combined storage warehouses, a state-of-the-art pod factory, administrative offices, and a new micro coffee roaster for Asmara Coffee.

The two wings were envisioned for the building, with the productive spaces taking on a more stereotomic language to the west, and the administrative functions and client interface being a more accessible glass façade, with a vegetated screen protecting the glazing from the early morning sun. Between these two wings, the warehouse and coffee-pod factory served as the infill, allowing the building to project the idea that people and production were the primary focus of the building, with storage and manufacturing becoming the intervening space.

The detailing of the building was kept in line with what has come to represent the architecture and design of TriBeCa over the years, namely selecting material palettes that require little to no finishing or cladding, and bespoke details unique to the identity of the company.





## CENTURION

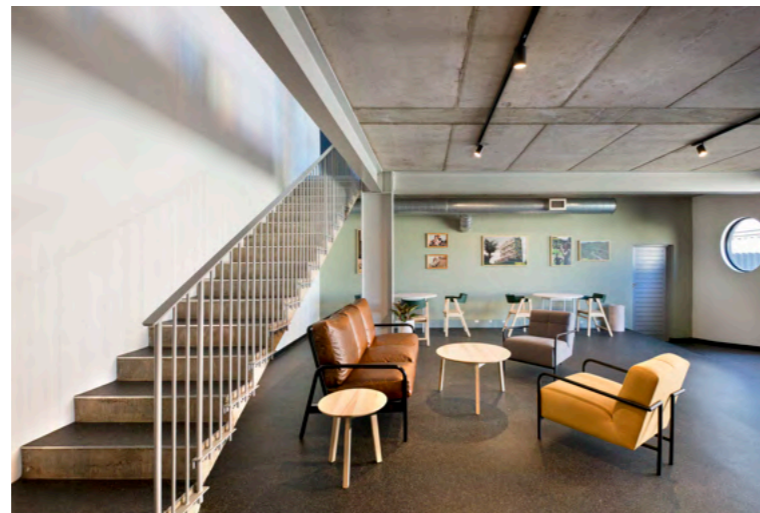
# LUCKY BREAD FACTORY COMPLEX

The intention was to adaptively re-use as much of the original fabric without breaking it down. The careful small-scale intervention in the building provides a new lease of life for a derelict factory. One warehouse was revitalized as a multi-purpose facility with a combination of storage and office space. The additional space allows for a Deli to be added. The other warehouse was revitalized as an artisan bakery for Lucky Bread. The bakery has become their head office as well as the main distribution outlet for all their franchise outlets. Additionally, the bakery has a factory outlet shop serving the surrounding community with all sorts of treats.

Lastly, the bakery boasts its traditional wood-fired pizza/bread oven, imported from France. It is all about the making and baking of food in the traditional way. The two buildings are tied together by the central courtyard space. An intriguing steel structure with mesh physically ties the two buildings together and forms the base structure for the indigenous plants to creep up and take total control. The detailing of the building is in line with what has come to represent the architecture and design of TriBeCa and Lucky Bread over the years. This includes selecting material palettes that require little to no finishings or cladding, as well as bespoke details unique to the identity of the company.

CENTURION

# TRIBECA FACTORY TRADE MODEL 12



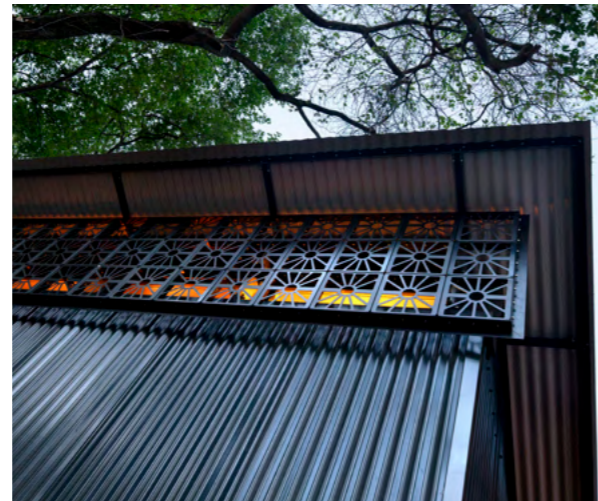
A box within a box – stacking volumetric space using new and existing fabric.

The existing building: The original building was designed by Philip Kleijnhans in the late 80s. A somewhat post-modern rendition, it was decided to retain parts of the mass brick structure of the old offices and modify it to a later modernist aesthetic. Minor details, such as steel balustrades, were kept to save costs.

Essentially, the new warehouse space had to be increased to more than four times the original size. The old steel structure was removed, and two main structures were added. Aesthetically, we aimed to create the illusion that the boxes were stacked onto one another by keeping the parapets horizontal and concealing the roof at the back. The steel boxes were then stacked on the mass brickwork below.

From a sustainability perspective, all water is harvested from the roofs and stored in above-ground tanks. This water is filtered and used for various processes on-site. Evaporative coolers use the harvested water to cool the space.

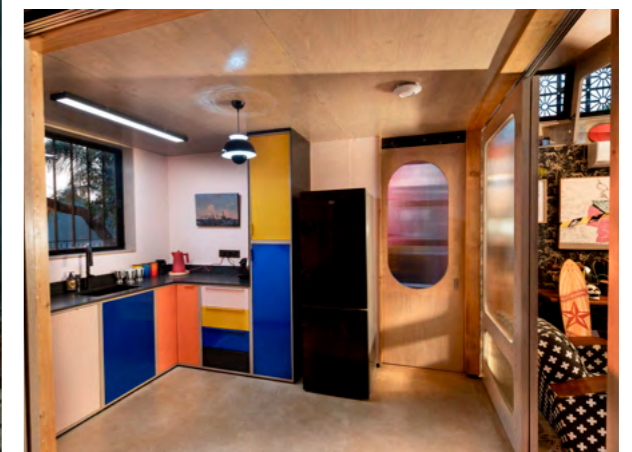
The building has been well-crafted by skilled artisans and contractors, resulting in a robust product for a deserving client, hopefully lasting another 50 years. The client takes pride in constructing buildings designed to last beyond the average lifespan of industrial factories, which is typically 20 years.



A young couple, both immersed in the creative industries—one an artist, the other a media and brand specialist—commissioned two distinct yet harmonious additions to their home: A compact, independent office to support their professional work, and a doll's house for their daughter, designed as a playful and imaginative space. The brief emphasized minimal disruption to domestic life and seamless integration into the existing home environment. The project was delivered in collaboration with our sister company, Four Revolution, using a rapid and highly digitized workflow: The design was developed in detail and modeled in 3D. The Components were manufactured using CNC (Computer Numerical Control) machines, enabling precision and speed. A complete plywood structural system was used, allowing for efficient prefabrication and clean assembly. 90% of the building was fabricated off-site in the factory. This allowed for a short on-site construction period, minimizing disruption to the clients' daily life. The entire project was completed within 8 weeks from the moment we went on site.

# PLYWOOD OFFICE

PRETORIA



PRETORIA

# INOAR

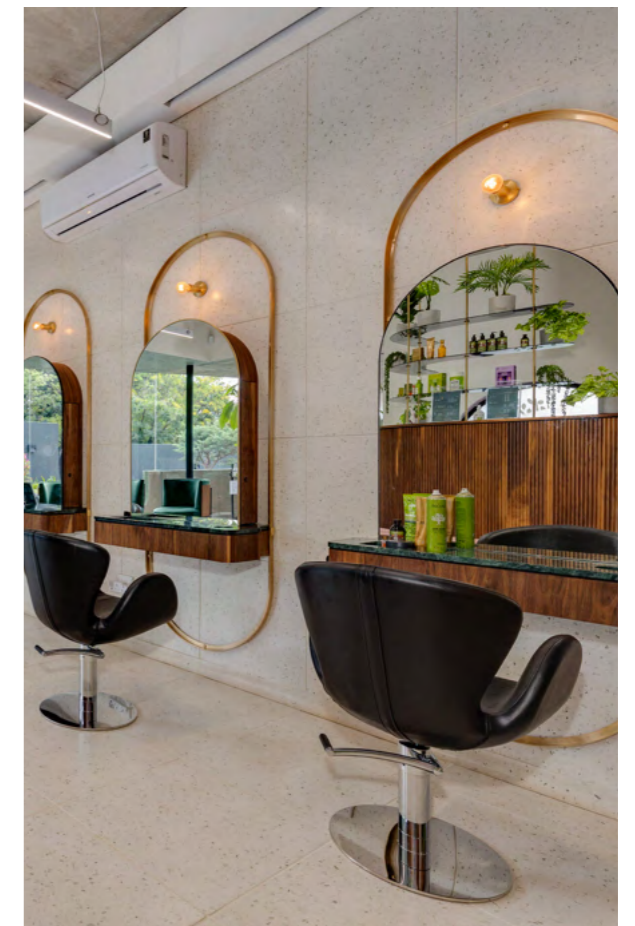


Inoar's new Nieuw Muckleneuk salon blends Brazilian heritage with a nature-inspired concept. Repurposing a former psychiatrist's office and garden flat, the renovated space now accommodates offices, a reception, retail area, café, and salon. The design emphasizes existing trees, integrating large windows to showcase them. Off-shutter concrete extends the garden flat, softening the building's edges, while a central courtyard serves as the heart of the space. A concrete roof with an opening for a Frangipani tree and a gently curving wall around it foster an intimate connection between nature and the architecture.

Commercial Architecture



Earthworld



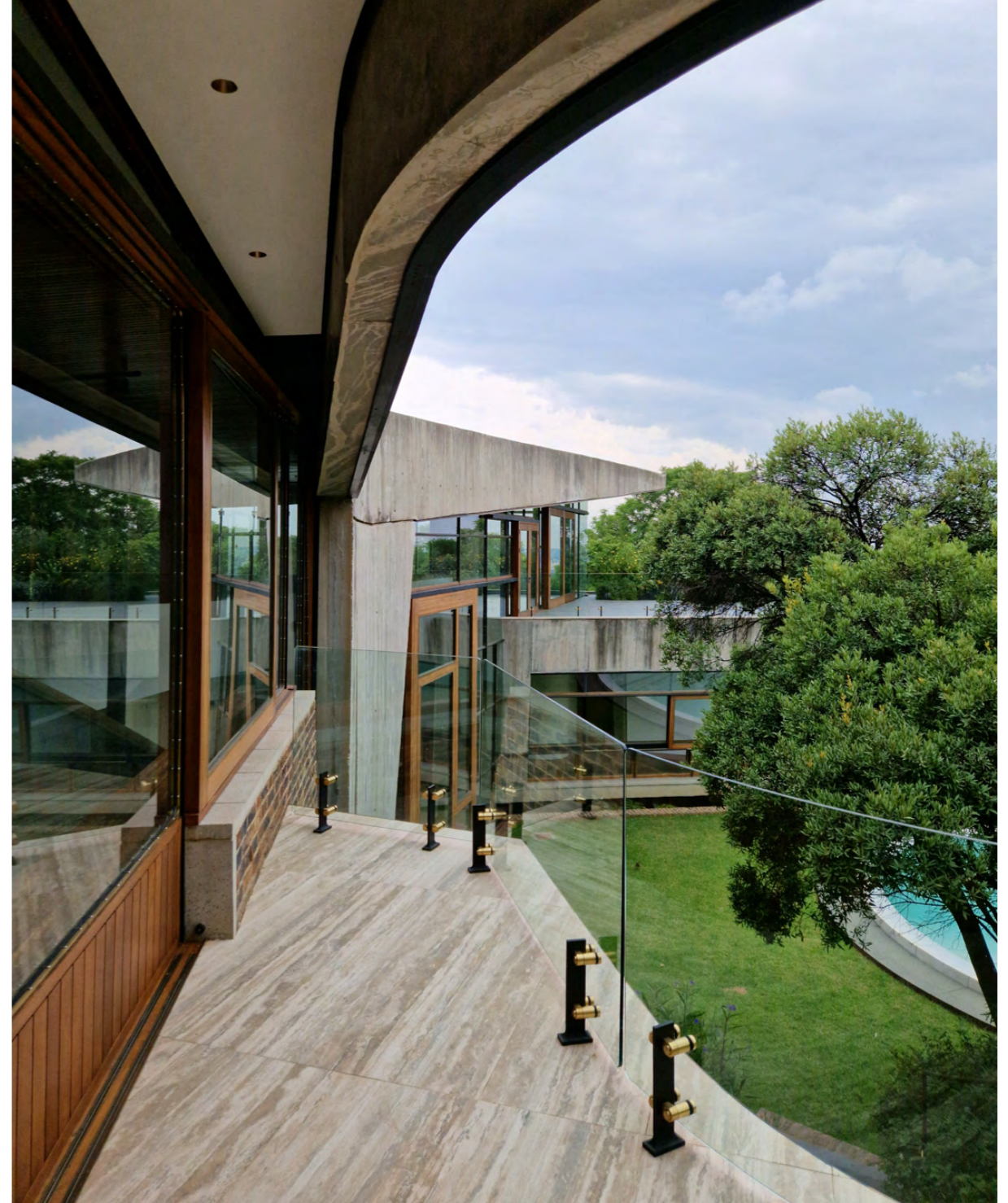


PRETORIA

# KO-SPAZA



An alternative approach to constructing buildings is through a simpler and more efficient method. This method is particularly aimed at small-scale construction, enabling anyone to build their required home, shop, or building using only a few basic tools and minimal labor. The complete plywood structural system is meticulously designed and modeled in 3 dimensions in the architect's office. Subsequently, it is sent to CNC (computer numerical control) machines for precise cutting and manufacturing of site components, which are then rapidly assembled on-site. The construction concept for Ko-Spaza has been in development for over a year. This idea originated from another project within our "R&D department." When the Ko-Spaza project presented itself, we recognized the opportunity to showcase our design process.



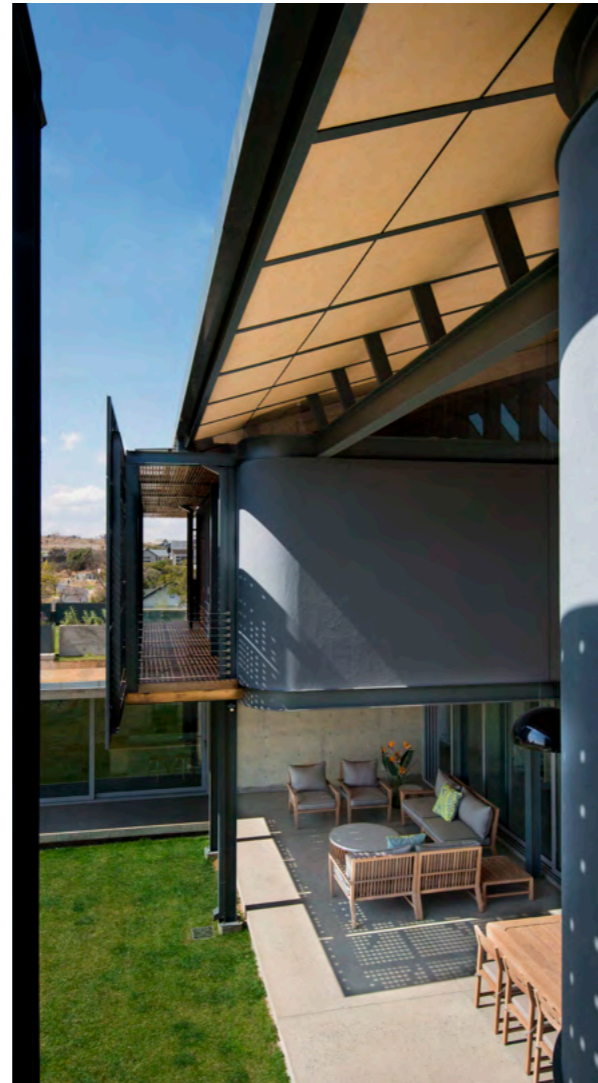
## CONCRETE HOUSE

PRETORIA

Earthworld

An exploration of materials and craft resulted in a project of which every component was designed, refined and manufactured by hand. The building is a result of close collaboration between various craftsmen and designers. Finding harmony in the passage of time and knowledge gained through parallel project exploration. Apart from the sculptural, Heideggerian qualities and expressionist character, the conceptual and formal exploration led to a building which is built within the city fabric; thus, the positioning of the structure closer to the street but elevated to be part of the city, but to also create privacy away from the city. Essentially an L-shaped building, the building inhabits the site to realize the entire site's latent potential of becoming a home with integrated indoor-outdoor spaces. Each with a distinct relationship to the building which has been designed to activate the site as a HOME.

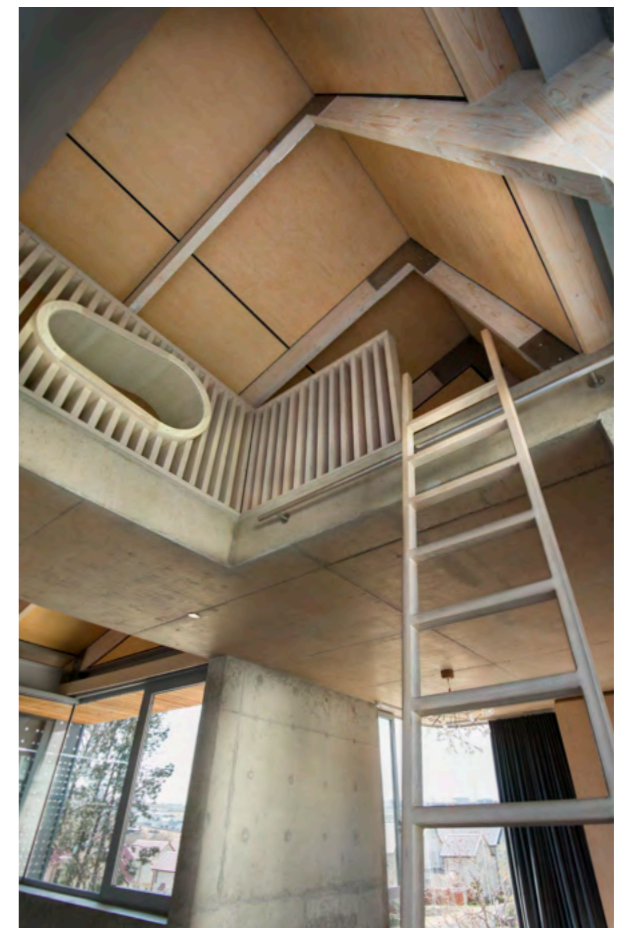
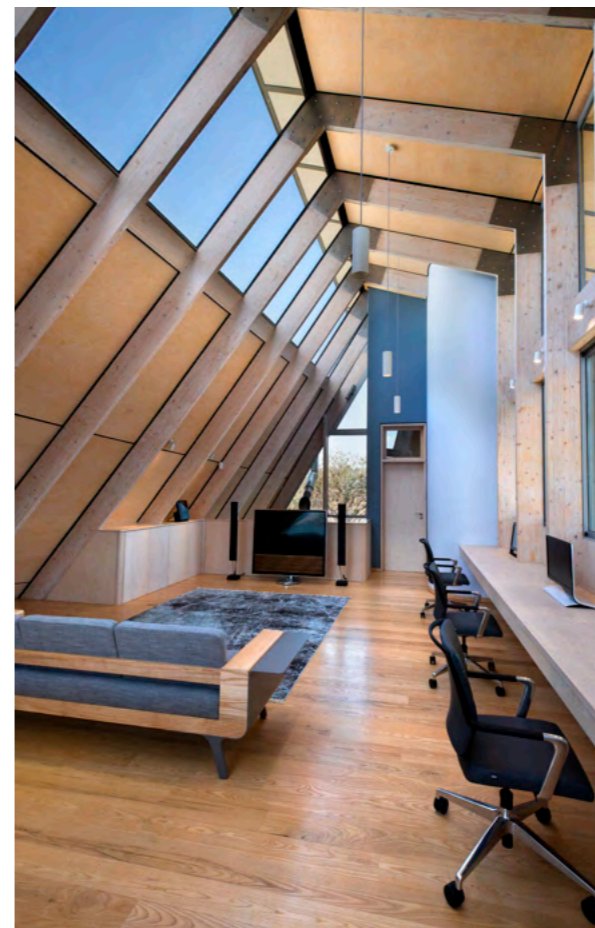
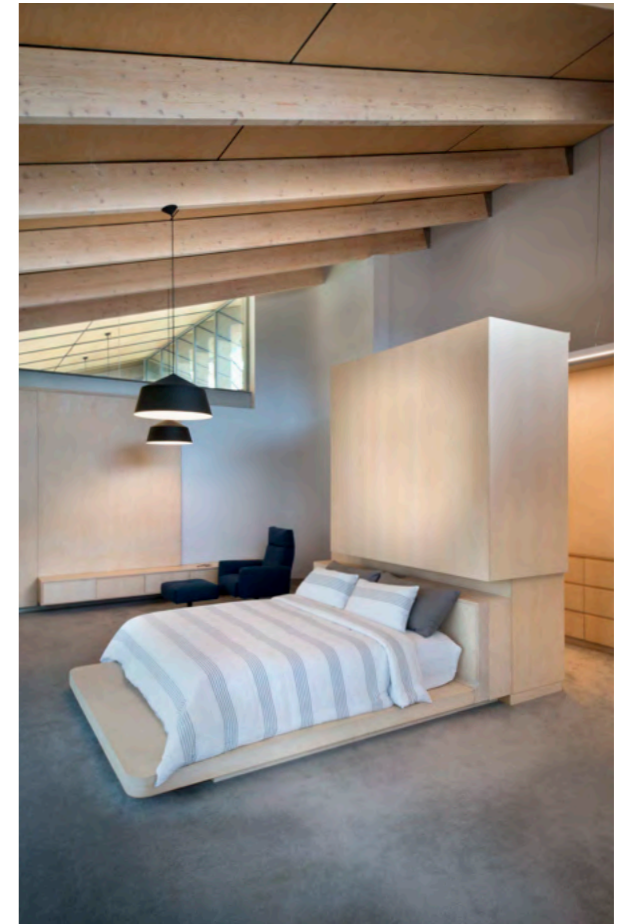
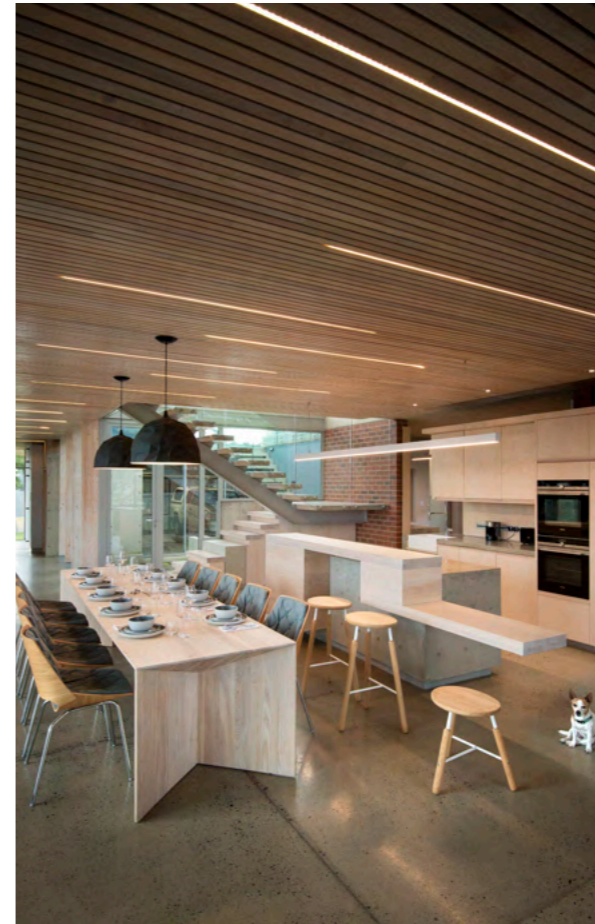




# WATERFALL HOUSE 1

MIDRAND

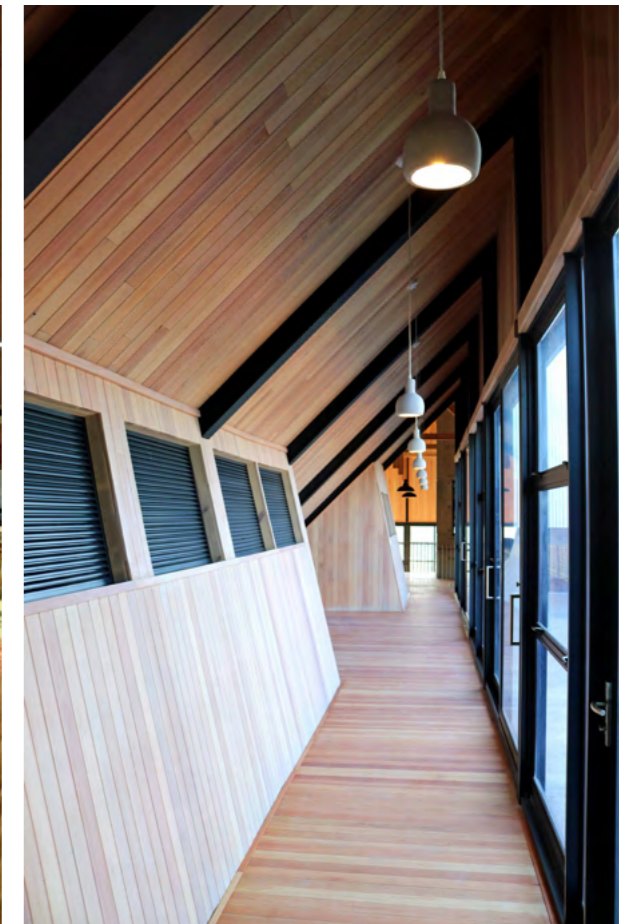
This technologically advanced home seamlessly blends indoor and outdoor spaces. Guests are encouraged to discover the lively social areas such as the expansive double volume patio, eco-pool that flows into a planted pond, framing the scenic communal lake view, a welcoming living area, and a bar that opens onto the pool and patio, all while ensuring the distinct privacy of the overhead space. The house features a rainwater collection system, borehole filtration station, and full automation for lighting, heating, and entertainment, accessible via cell phone or control panels. This residence encourages undiscovered possibilities within the South African architectural scene.



RUST DE WINTER

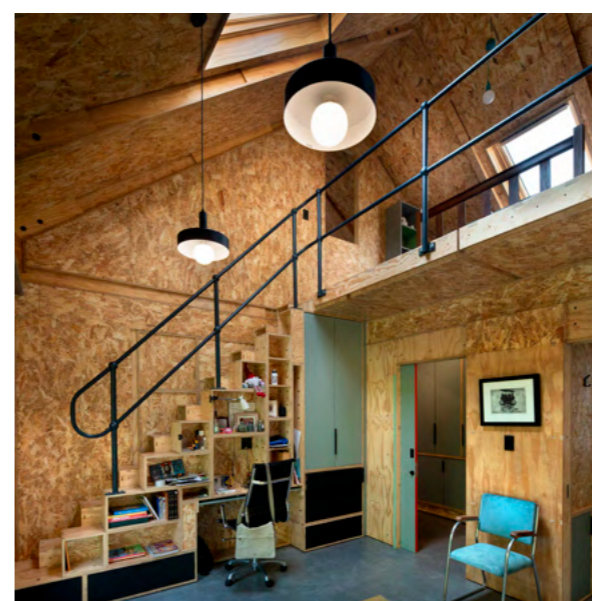
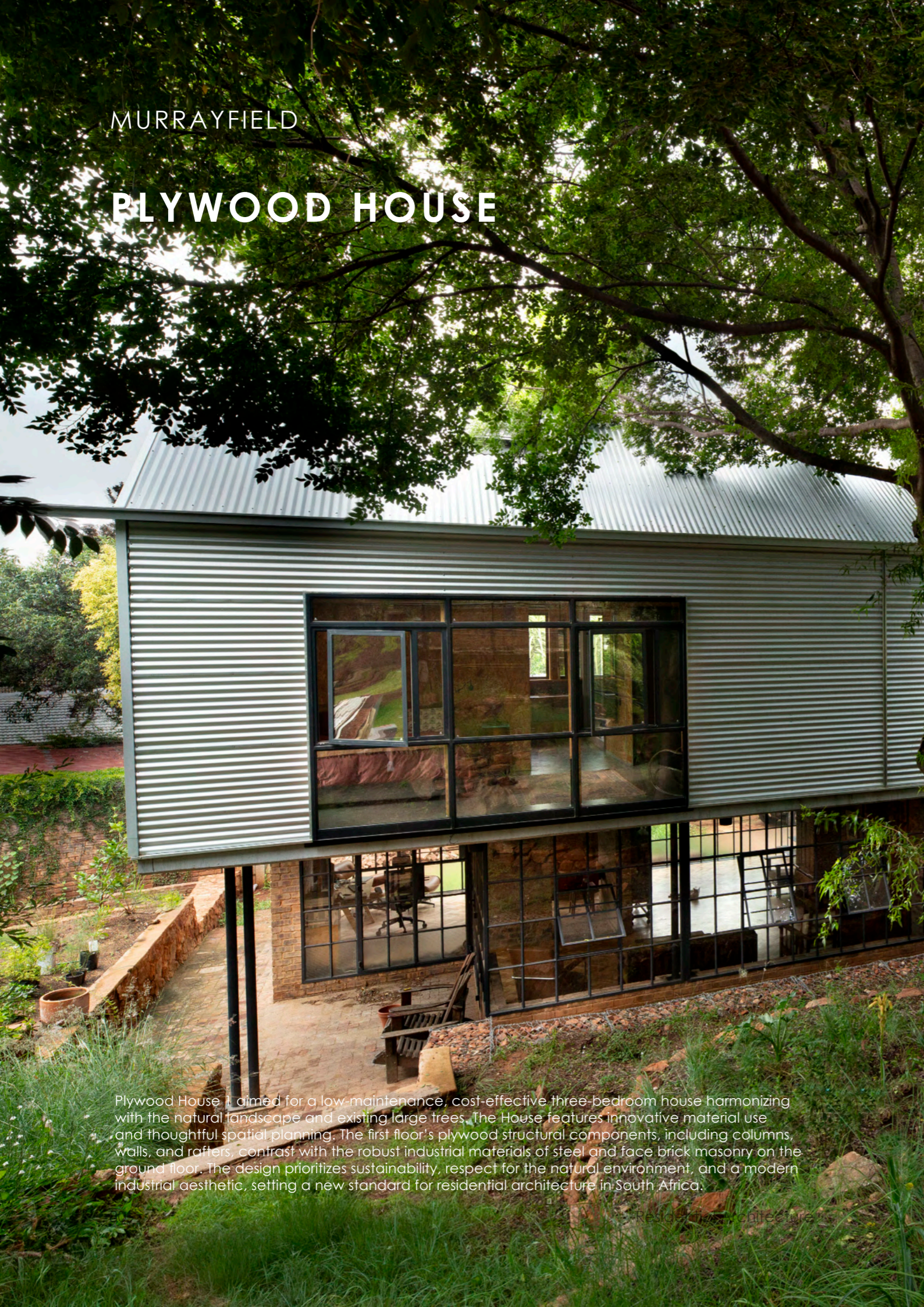
# BOSVELD FARM HOUSE

The design called for various living spaces, each with its own character. However, while the House van der Westhuizen takes on a familiar shape of the traditional, pitched roof house, it's built using a system of pre-manufactured steel components. This design attempts to rethink the spaces its typical form creates, while also making the construction of the spaces eligible to those who interact with the building on a daily basis.



MURRAYFIELD

# PLYWOOD HOUSE



Plywood House is aimed for a low-maintenance, cost-effective three-bedroom house harmonizing with the natural landscape and existing large trees. The House features innovative material use and thoughtful spatial planning. The first floor's plywood structural components, including columns, walls, and rafters, contrast with the robust industrial materials of steel and face brick masonry on the ground floor. The design prioritizes sustainability, respect for the natural environment, and a modern industrial aesthetic, setting a new standard for residential architecture in South Africa.

Residential Architecture

Earthworld



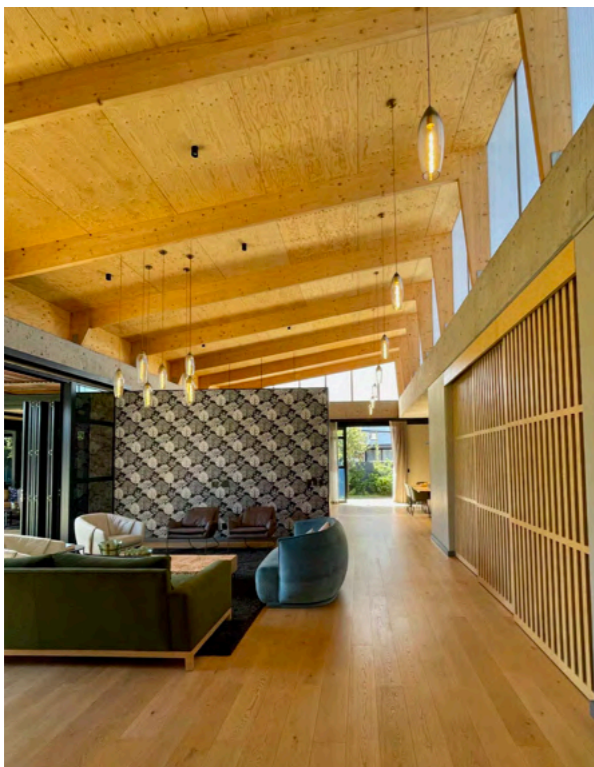


# ROWAN STREET

## STELLENBOSCH

Adjacent to a beautiful public park, the original family home overlooks the Stellenbosch and Jonkershoek mountains opening up the suburban fabric to views. A popular route to the Eersterivier passes by with access to an abundance of trails for mountain bikers and dog walkers alike. Due to its small corner plot, the house's square design limited natural light penetration. While preserving some original walls and the footprint, the new addition is made up almost entirely of timber. A corrugated pyramid roof covers the central square, with surrounding lean-to roofs sheltering a traditional "stoep" that transforms into openable solariums strategically positioned for added privacy and heating during winter warmth.





# COURTYARD HOUSE

PRETORIA  
Earthworld

The house sits on a flat, enclosed residential site allowing for 3 courtyards and a large open front space. Opting out of a southern wall, the house's façade acts as a barrier, featuring green screens and select openings creating a large open landscape at street view. A 1:5 volume circulation space connects living and bedroom areas, adorned with laminated spruce beams and plywood. The facades exhibit external walls, built with a simple flush jointed Clinker brick, aluminium glass facades with high-performance for thermal comfort, and floating roofs for summer shade. Finally, the landscape design was a palette of a well-considered indigenous plants and trees.



# FLOATING CONCRETE BOX

SILVER LAKES

To limit any disturbance to the site, the design limited contact to the two rocky outcrops. A palette of steel, glass and concrete were chosen. The building comprises of two perpendicular concrete blocks carefully positioned amid prominent Karee en Appelblaar trees, and bridging between the two rocky outcrops. The house, barely touching the ground, and features two contrasting in character, floating staircases as the only access points slightly above the natural ground level. Aside from basic ancillary facilities, the client's brief was clear: 4 en-suite, a study, open plan living, dining, kitchen, and family room.



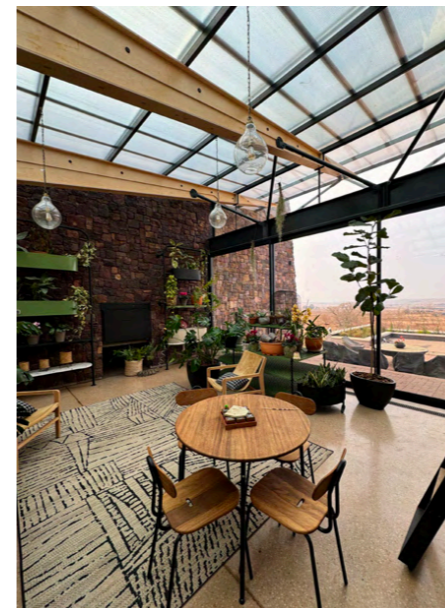


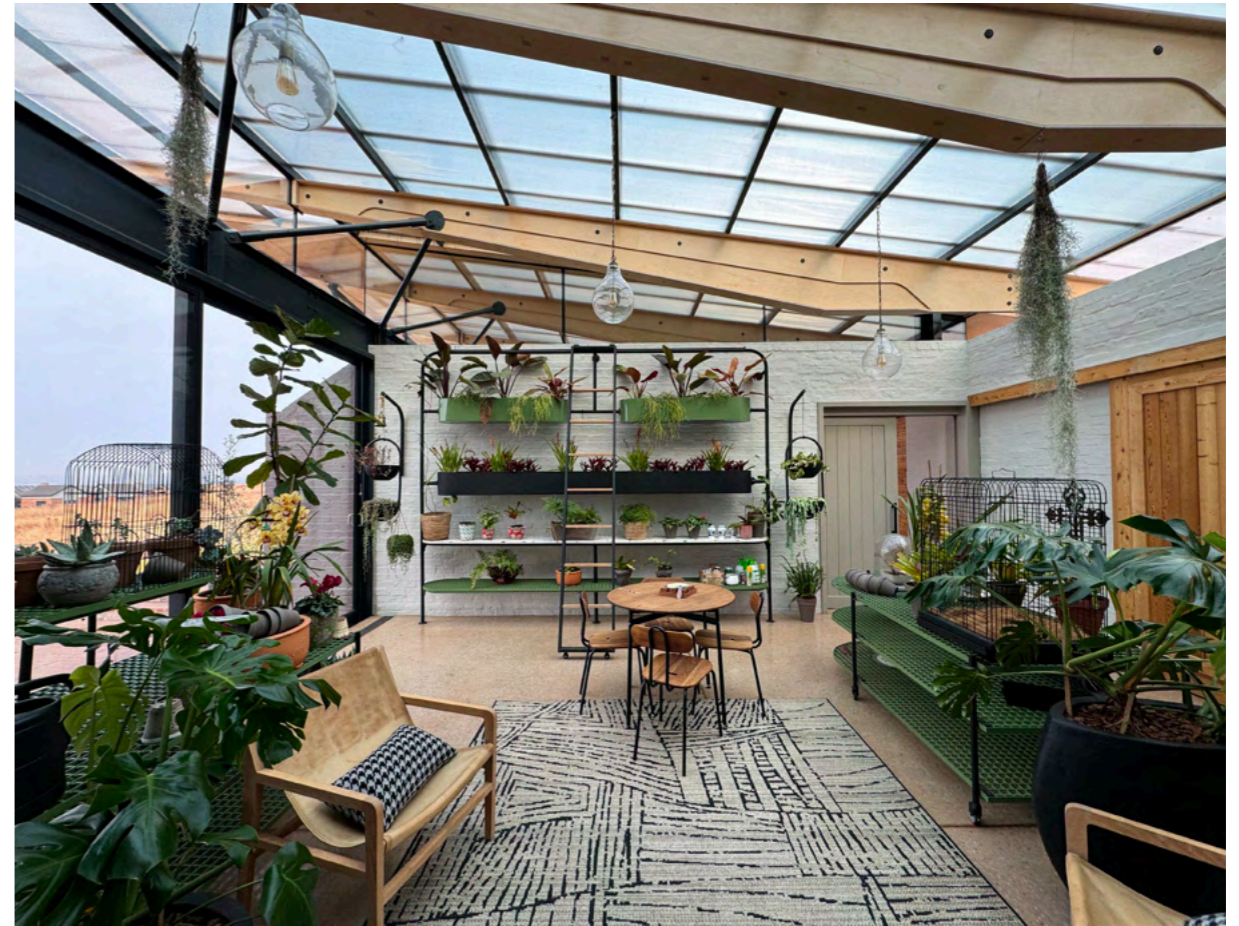
# HIGHVELD HOUSE

MIDDELBURG

Nestled in the rolling hills of Mpumalanga's Highveld, the home caters to passionate plant lovers, prioritizing a greenhouse before the house. The conservatory serves as the main point of entry, from here one can move freely into the summer and winter courtyards, the western living wing, and the eastern bedroom wing.

Operating off the grid, the house employs various sustainable strategies for thermal efficiency and reduced carbon footprint. The interior is composed of natural materials, with stone walls, honed and polished concrete floors, and bagged washed masonry walls. The birch plywood ceiling's light tone influenced the Scandinavian style evident in the cabinetry and kitchen design.

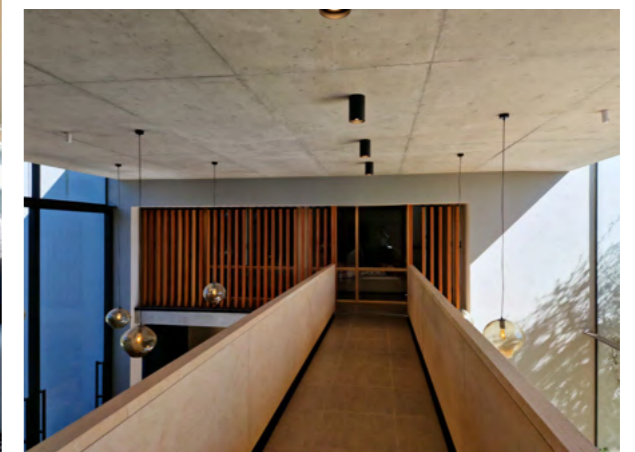




# BLOCK HOUSE

PRETORIA

The house underwent substantial alterations, emphasizing spatial clarity by removing superficial mass, creating two stereotomic blocks connected by a transitional space. The building is a negotiation between; Solid vs Void, Open vs. Closed and Introverted vs. Extroverted. Thus, the idea of carving into mass was explored, creating very specific openings where light enter the building. A floating timber bridge and floor unify the space between the two stereotomic blocks, while a 5.2m glass opening extend the transitional area to the outdoor pool. Materials used for construction were selected to maintain a minimalist yet textured and warm aesthetic.





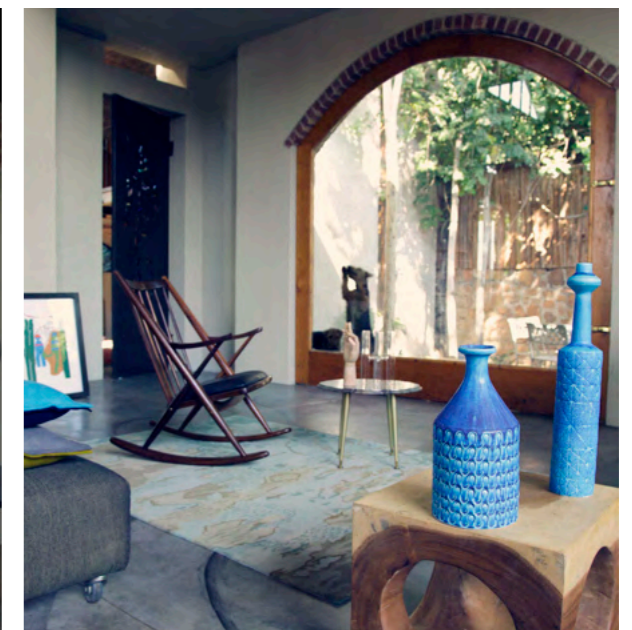
## WATERFALL HOUSE 2

MIDRAND

96

Wrapped around a central courtyard, the design's focus was that of place making for a small family in the context of sweeping estate in one of Gauteng's most frenetic areas. With this kept as the driving intention, respect is still paid to the expansive panoramas over the dam to the south of the house. The principles applied to the wrapped massing of the design are carried through to the materiality of the interior, with much of the space being clad in plywood, exuding a visual warmth in a way only timber can. The communal spaces of the house appear to float above the far more stereotomic private areas on the natural ground level.

Residential Architecture



## BRICK VAULT HOUSE

PRETORIA

Earthworld

The brief was simple and open-ended. Design a house with character, where materials and the effective use thereof are prevalent. The basic design parameters set, was to design a "shell" suitable for future conversion and simple change as the requirements and lifestyle of the clients change. Space is articulated with natural light, let into the main living space through glass walls on the Western- and Easter Facades. The solids are only broken where a small door punctures the Northern Façade. Entering the main living-area you become aware of the vast space covered by the membrane-like vault.

97

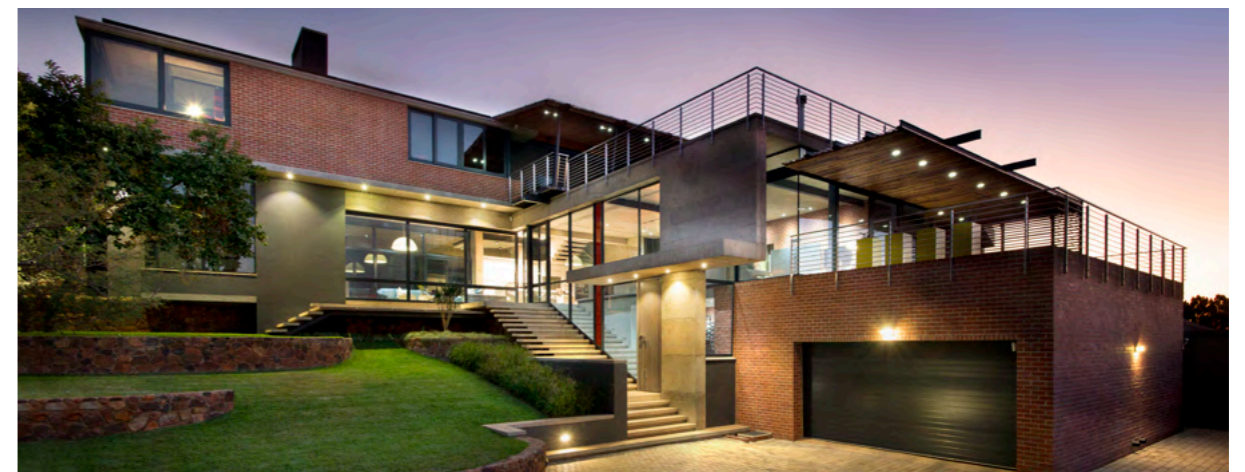
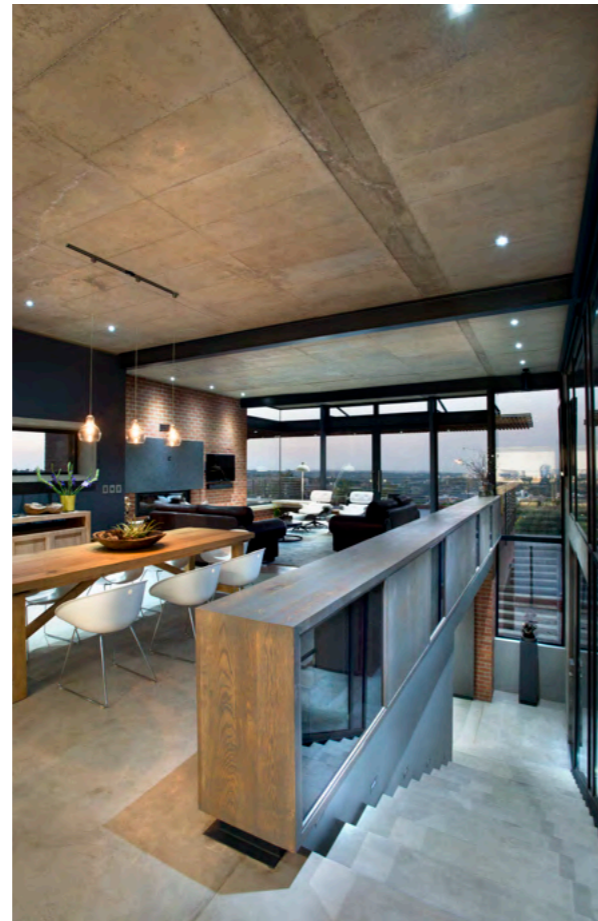


# FLOATING TIMBER BOX

PRETORIA

Nestled on a small lake within the expansive residential estate of Mooikloof. The design inspiration was drawn from the seamless integration of the lake with the house, which served as both a natural backdrop and a picturesque view visible from every room. Three distinct pavilions, each strategically align with the lake. While two pavilions were crafted using brick and concrete, the third pavilion, is constructed from timber and appears to delicately float above the second brick structure.



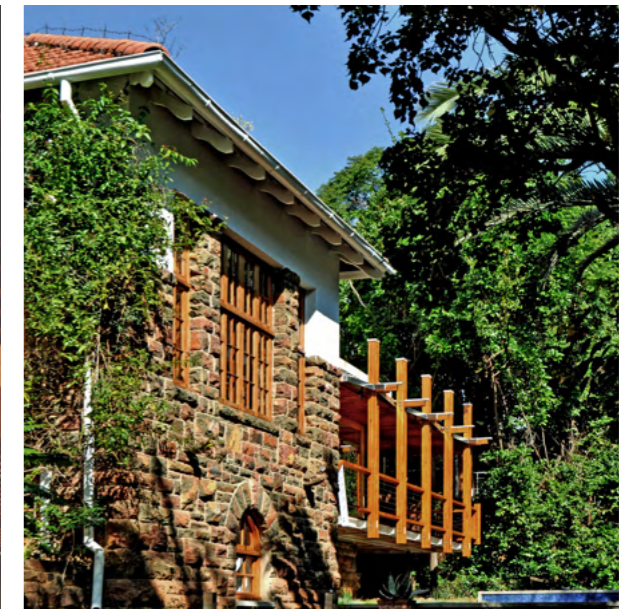


# GROENKLOOF HOUSE

PRETORIA

Earthworld

The site offers a commanding Northward city view, which features into the design to optimize solar access. The southern facade opens towards Klapperkop, whilst still protecting the client's privacy from cyclists and joggers in the nature reserve. The horizontal planes of the roofs are cleverly utilized as living terraces. The layout forms an L-shape configuration while preserving views. The material palette is kept simple and honest, consisting of red face brick walls, a concrete super structure, aluminium, glass and a light-weight steel roof. Private areas exhibit a more stereotomic composition, contrasting with the open and exposed, shared spaces.

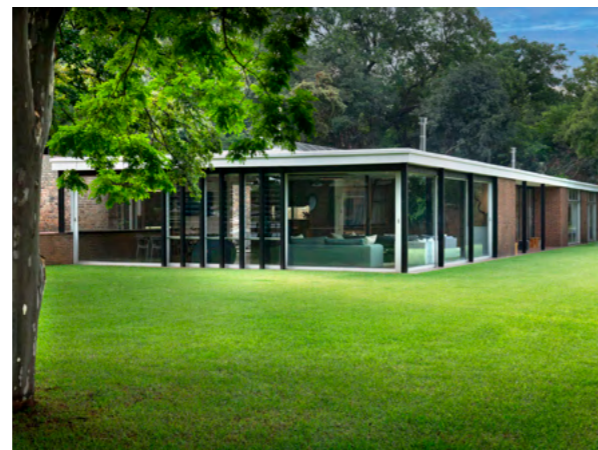
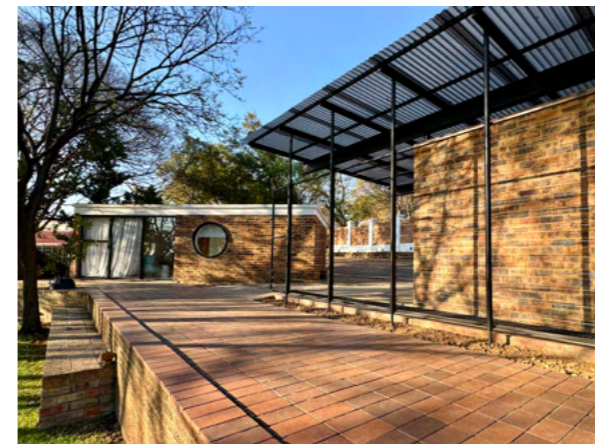
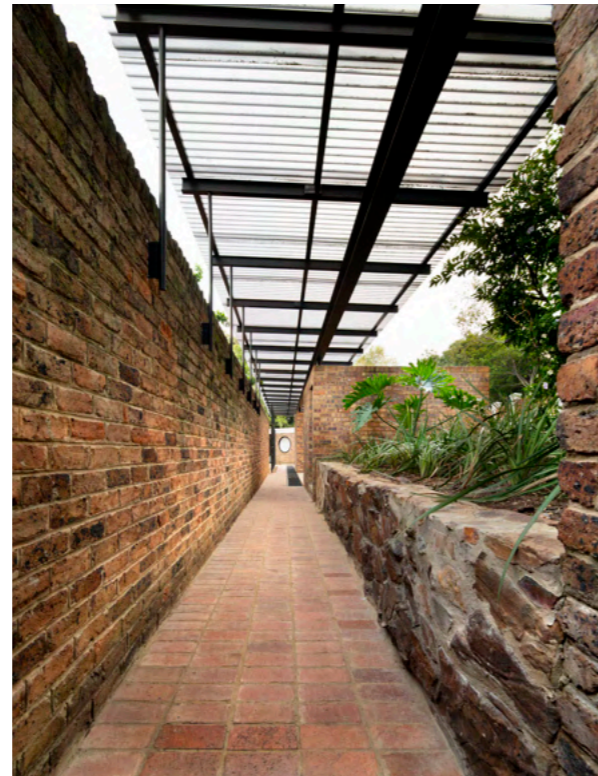


# HOUSE Z

PRETORIA

The project was a simple additions and alterations to a charming 20th Century Baker School Residence in Waterkloof. The clients made it very clear that they didn't want to change the Existing Structure as it represented all they loved in terms of the lifestyle they had. A subtle re-interpretation was required. The basic scheme was to convert the existing Main Bedroom into a Kitchen, add a New Main Bedroom and a Veranda that would also become a unifying element linking the Old and New Structures.

A "Floating Concrete Block" which doesn't touch the original Structure was added to become the Main Bedroom (en-suite). A Timber Veranda, slightly overlapping the Existing Structure was bolted to the Existing Structure and projects into the Garden, drawing in the Natural Landscape. The subtle, yet contemporary intervention will enhance the timeless quality of a beautiful structure whilst providing the much needed existential interface the Clients required.

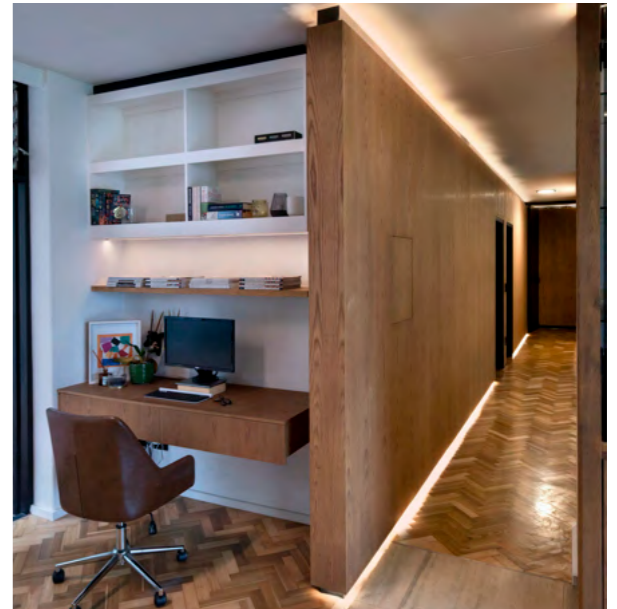
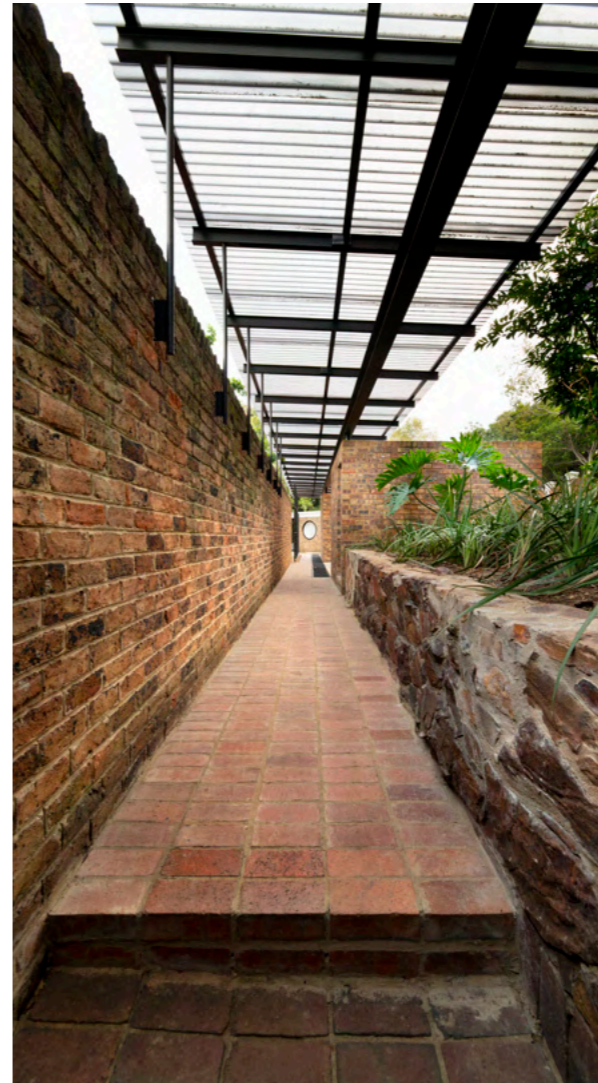


## 20TH CENTURY MODERNIST PRESERVATION

PRETORIA

Earthworld

As we honor South Africa's architectural heritage, Earthworld proudly highlights a pioneering project by Anthony Carden (Tony) Doherty from 1967, a time coinciding with the Minitoria and Pretoria Art Museum. Doherty's introduction of aluminium-framed doors and windows was a bold move that set a new standard in modern architecture. Doherty's innovative use of aluminium framing allowed for expansive glass panels, integrating indoor and outdoor spaces and significantly enhancing both aesthetic and functionality. His design philosophy, rooted in modernist ideals, blended harmoniously with South Africa's unique context, creating a lasting architectural impact. In a testament to this legacy, Earthworld recently completed a meticulous renovation of Doherty's masterpiece. The residence was carefully disassembled, serviced, and reassembled to honor the original 1967 design. This project not only preserves but also celebrates the architectural advancements of Tony Doherty, showcasing a seamless integration of past and present. Earthworld remains committed to honoring architectural heritage through thoughtful restoration and innovation.





# BUSHVELD HOUSE

PRETORIA

The building is carefully placed as pavilions, nestled amidst thorn trees, comprises of four interconnected pavilions catering to living, sleeping, services, and guests forming a combined unit. Its design encompasses three conceptual elements: the roof and ceiling emulate the horizontal plane of the acacia thorn trees providing shade for its inhabitants, "anthill-like" fireplaces acts as beacons in the landscape, and jagged-edge stonewall elements mirror the surrounding stone of the landscape. Notably sustainable, the design integrates effective glass shading, excessive roof insulation, solar hot water heating, planted roofs, water harvesting linked to landscape irrigation, and energy-efficient glazing



# BUSHVELD STEEL HOUSE

BOSCHHOEK

Taking inspiration in the work of Jean Prouvé most of the house's steel structure and infill was prefabricated of-site, greatly reducing construction time and allowing use of materials & techniques rarely used outside urban areas. The home is mostly constructed of a light tectonic structure with a small part as a stereotomic brick structure to the south. The prefabricated glass and light wall infill system encloses the living spaces. As the site is located among the Waterberg mountains – the clients were excited about the contemporary design as not to challenge the natural beauty, but to allow for awesome vistas.



# WALL STREET RESIDENTIAL

PRETORIA

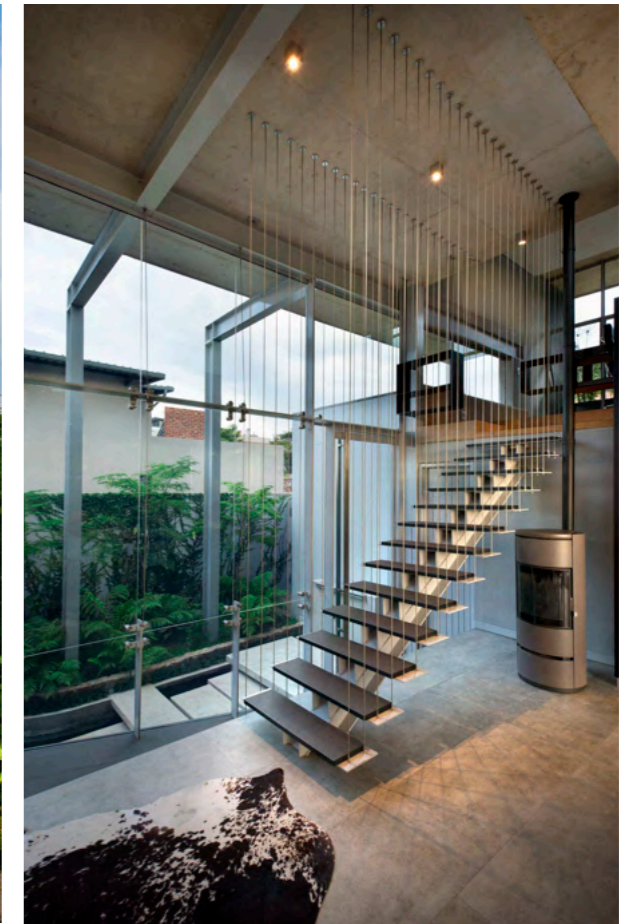
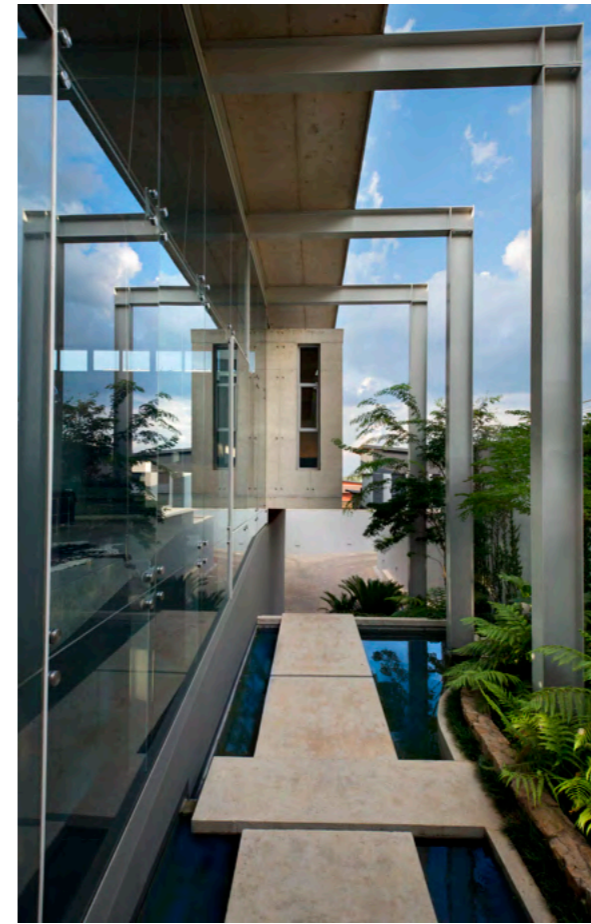
Wall Street, a high-end housing development in Alphen Park, Pretoria, holistically integrates natural surroundings into its design, setting it apart from neighbouring developments. The street elevation explores the use of raw materials that timelessly perches it amongst its neighbours. When standing in the main communal yard of the complex one is reminded of the spatial qualities of 'The Salk Institute', each entrance, pergola, balcony or even carport visible within the yard, is an accentuated threshold alluding to the more private spaces beyond it. Bold masonry panels cut through the building to articulate each unit. Robust concrete beams define each balcony/ planted garage roofs while airy steel and timber carports delicately float above the entrances. The interiors boast the same raw materials once again discreetly alluding to the organization of space.

Residential Architecture



Earthworld

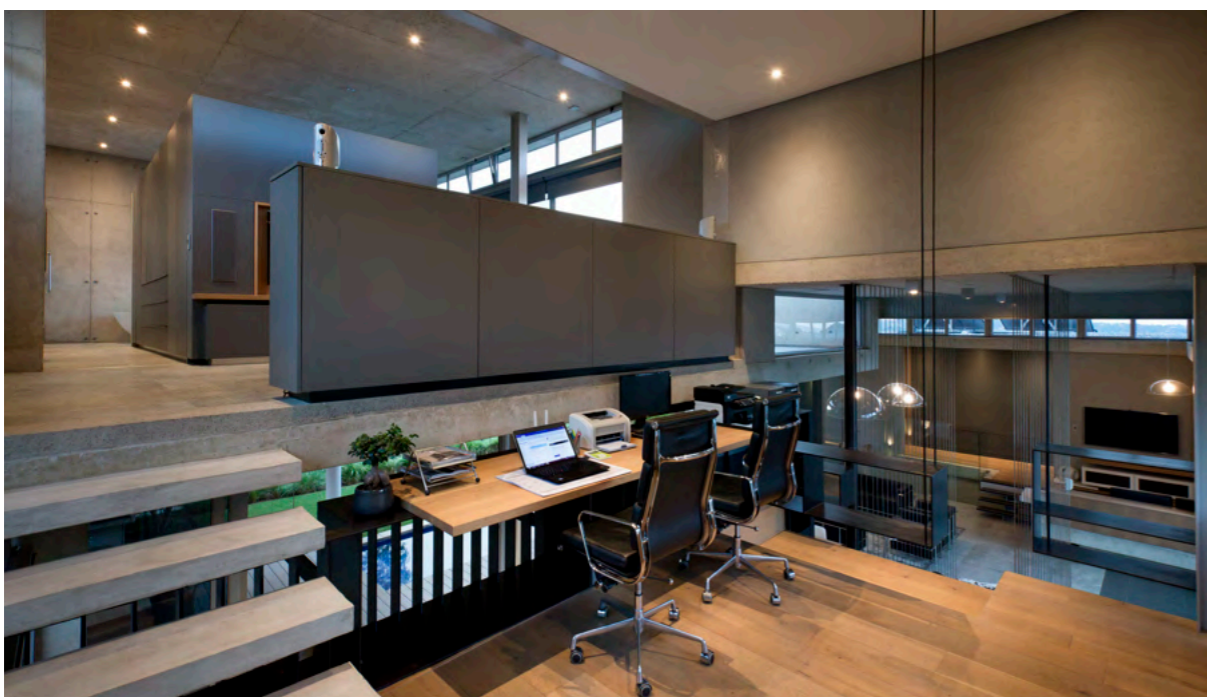
111



# FLOATING CONCRETE ROOF

LYNNWOOD RIDGE

This project belongs to a body of work where the relationship between structure, the impact on a site and the architect's role as mediator between landscape and man was explored. The entire site should become the actual dwelling. The structure must merely reinforce the latent potential of the site, ordering nature just enough to facilitate dwelling. The constraints of the project created an interesting interplay between the size of the house, requiring 4 bedrooms to house the family, and the compact nature of the estate in which the project finds itself situated.





BROOKLYN

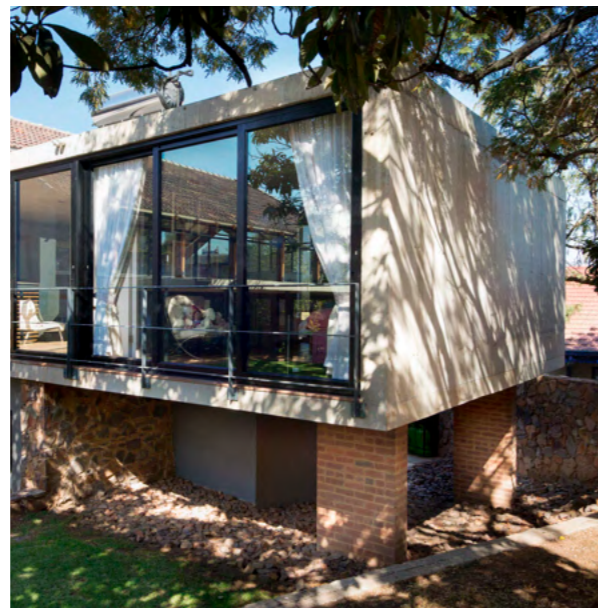
## THAI RESIDENCE

---

The Official Residence of the Ambassador of Thailand, historically known as “Brooklyn House,” is a landmark property in Pretoria with significant architectural and political heritage. Originally built in the early 1930s and later expanded, the residence has housed prominent South African figures and hosted pivotal political events. The Royal Thai Embassy has commissioned Earthworld Architects to modernize and expand the residence while preserving its historic character. The project aims to create a contemporary, functional home that respects and highlights the building’s original features.

The design retains and celebrates the historic exterior shell and roof gables, while introducing a contemporary “box” structure within the roof, clad in timber slats. This new element contrasts with and complements the original architecture. The northern masonry walls are replaced with glass sliding doors, enhancing the connection between indoor and outdoor spaces and maximizing enjoyment of the extensive gardens. The “box” structure is constructed from Cross Laminated Timber (CLT), a highly innovative and sustainable engineered wood product. CLT was selected for its exceptional strength-to-weight ratio, allowing for a lightweight structure that does not require additional foundations and can be rapidly assembled atop the existing building. This approach minimized disruption to the historic residence and expedited the construction process. Notably, this project represents one of the largest applications of CLT in South Africa, setting a new benchmark for sustainable building practices in the region. This approach balances heritage conservation with modern living. The intervention is intentionally distinct yet respectful, highlighting the original building’s character while providing 21st-century amenities. The new elements are visually and functionally integrated, ensuring the residence remains a prestigious and comfortable home for future ambassadors.



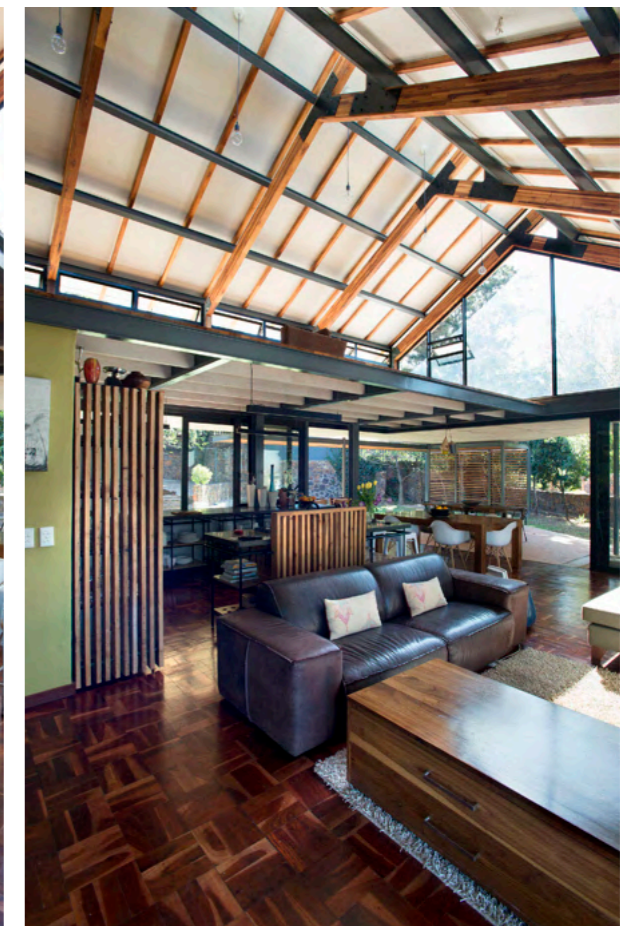


# STRUBENKOP SANCTUARY

PRETORIA



With little intervention to the spatial layout and the existing roof structure, an ordinary suburban house has been converted into a beautiful living-space. The focal point of the intervention is the double-volume space created by an exposed truss roof structure and surrounded by patios to create an effortless transition between internal and external living spaces – creating a home that resonates very well with the client's typical South African outdoor life-style. The architecture is a showpiece of the conversion of the unoriginal into something that is exciting and delightful.



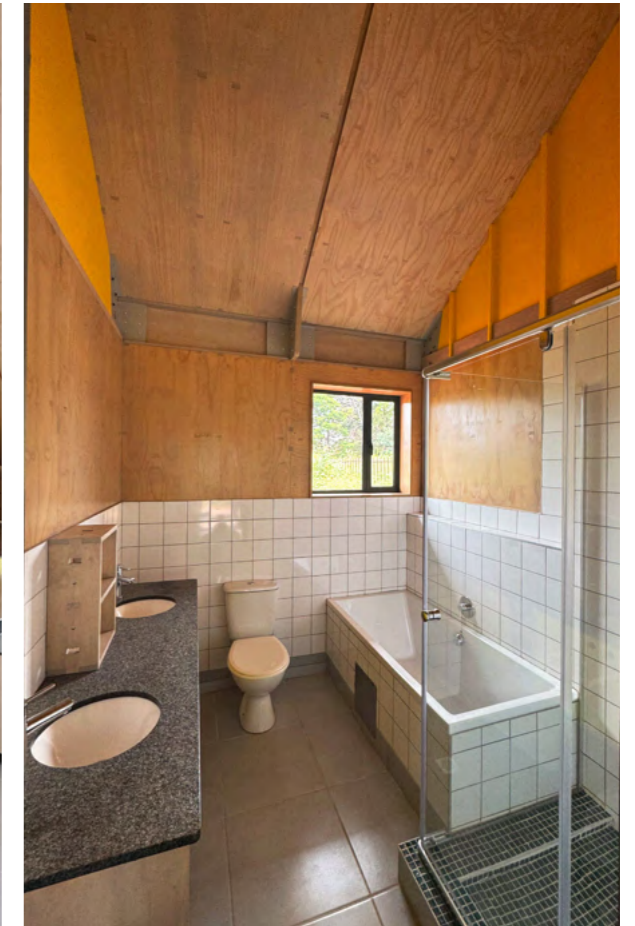


# CSCC DREAM HOUSE

MOOIKLOOF

Children's Dream Home is envisioned as a nurturing residence for an orphanage in the east of Pretoria. Commissioned by the CSCC Church, the goal was to create a home that truly embodies the warmth and connection of family living. The design proposal called for a modular structure that could be constructed rapidly—within just eight weeks from start to finish—minimizing disruption and providing immediate benefit to the children.

Children's Dream Home exemplifies this vision, showcasing both architectural innovation and environmental responsibility. Designed as a low-maintenance, cost-effective three-bedroom home, it features thoughtful spatial planning and the creative use of materials. The exterior is wrapped in corrugated sheeting, lending the house a cohesive, contemporary industrial aesthetic while ensuring durability and ease of upkeep. The use of plywood not only reduces costs but also supports sustainable building practices.





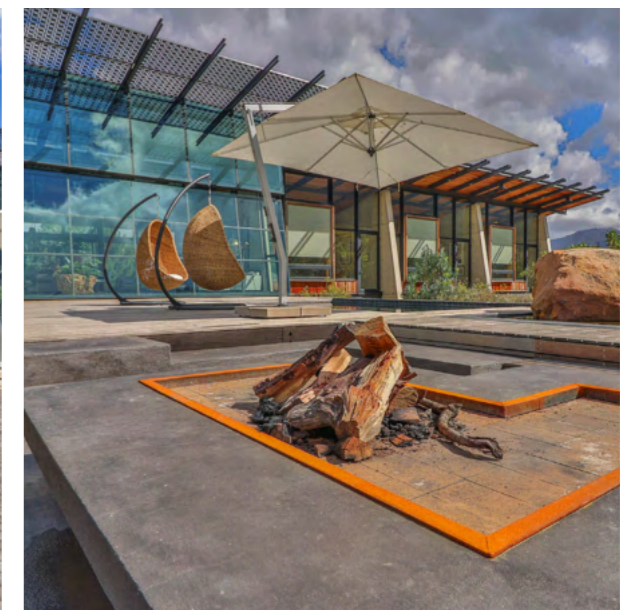
TULBAGH

## HOUSE ALTO

---

Nestled in the mountain amphitheater of the Groot Winterhoek Mountain Peak in Tulbagh, is the Alto Bioreserve. Alto house pays homage to the site, hovering above the site on 6 concrete piers, allowing the natural site to continue under the building.

A sustainable building is passively designed to welcome the winter sun and exclude the summer heat gain. The home has a low ecological impact, built with environmentally sound materials with a low carbon footprint. The doors and windows that are double glazed with underfloor heating for winter comfort. The farm uses solar power although provision has been made for the installation of a hydroelectric generator and turbine. The interior of the house is wonderfully light with stone floors and large glass window systems to enjoy the sun and the spectacular views.



# MAGAZINES, NEWSPAPERS, ARTICLE AND BOOKS

## PUBLICATIONS

- 2025: Lucky Bread Editors, 2025\_Lucky Bread Company\_PIA Award for Architecture 2025 Win!\_Available from [www.luckybread.co.za/blog/pia-2025](http://www.luckybread.co.za/blog/pia-2025) Accessed 17 November 2025 <https://luckybread.co.za/blog/pia-2025>
- 2025: Slabbert, A. 2025. Boston Hydro Property giant now also generates green power - Maroela Media accessed 2025.10.23.pdf [https://maroelamedia.co.za/nuus/sa-nuus/video-eiendomsreus-wek-nou-ook-groen-kragop/?mc\\_cid=464e326421&mc\\_eid=117d4a54c8](https://maroelamedia.co.za/nuus/sa-nuus/video-eiendomsreus-wek-nou-ook-groen-kragop/?mc_cid=464e326421&mc_eid=117d4a54c8)
- 2024: Cemcrete, 2024. Project Design Journal\_Nando's Diepkloof Square - CemcreteOnline - Available from [www.cemcrete.co.za](http://www.cemcrete.co.za) Accessed 24 May 2024.pdf
- 2024: SCAPE\_April 2024\_In Conversation With\_Vol. 103 by Paper Plane Publications - Issuu, Pg 74- 79 accessed 2024.04.10 [https://issuu.com/outsideandinmag/docs/scape\\_april\\_24\\_retail\\_issuu](https://issuu.com/outsideandinmag/docs/scape_april_24_retail_issuu)
- 2024: Graphisoft website\_Future Africa Campus Showcast accessed 2024.03.06 file:///Z:/F/EarthWorld%20Company%20Profile Publications%20(Scans%20of%20Articles)/2024\_Graphisoft.com.%20Future%20Africa%20Campus%20Earthworld%20Architects.%20South%20Africa.%20https---graphisoft.com-case-studies-earthworld-future-africa%20accessed%202024.03.06.html
- 2024: Both, M. 2024. Leef groen in die berge - Alto Organic retreat. Rapport Beleef, 14 Januarie, bl.2.
- 2023: Architizer Editors, 2023\_Earthworld\_20 Best Architecture Firms in South Africa - Architizer Journal. Online - available from [www.architizer.com](http://www.architizer.com) Accessed 10 October 2023
- 2021: Wood, G. 2021. Belgique, Cést Chic - Belgian Embassy. Visi, August-September, Issue 115, p.184-187
- Besson, C. 2021. Every day is a good hair day - INOAR. Pro Lanscaper, October, Retail Issue, p.Cover, 55-60 (magazine)
- De Lange, A. 2021. Boldly Brazilian - Inoar. Visi, August-September, Issue 115, p.150-153 (magazine)
- Eksteen, A. 2021. IUPA 2020 Special Prize - Future Africa. Bauwelt 1.2021, p.16
- Eksteen, A. 2021. Future Africa Innovation Campus Developing African Science Leadership, Pretoria, South Africa, 2018. IUPA - World Architecture 2021-01, p.11-13, p.44-49
- Gunter, A. 2021. Earthworld Architects' House Dreyer, Mooikloof Estate, Pretoria. Timber IQ Issue 52 February-March 2021, p.Cover, p.6-11
- Klinger, A. 2021. Influencers' Influences - Earthworld Architects. Visi, June-July 2021, Issue 114, p.40-42
- Sterkowicz, J. 2021. INOAR SA OPENS FLAGSHIP SALON & LIFESTYLE CENTRE IN PRETORIA. Professional Beauty. Online - Available from [www.probeauty.co.za](http://www.probeauty.co.za) Accessed 06 July 2021. p8\_July 2021
- Van Breda, M. 2021. Nuwe Spogsalon-INOAR. Sarie. Online - Available from [www.sarie.com](http://www.sarie.com) Accessed 01 July 2021. p11\_Julie-August 2021
- Wood, G. 2021. Belgique, Cést Chic - Belgian Embassy. Visi, August-September, Issue 115, p.184-187
- 2020: Slawik, H; Bergmann, J; Buchmeier, M; Tinney, S. (2020). Foghound Interactive Coffee Shop & Showroom. Container Atlas 2010-2020: Pg 70-73, 289 (Book)
- De Lange, A. (2020). Meeting of Minds - Future Africa. Visi Issue 106 Feb-Mar 2020, Pg 86-95 (magazine)
- Wind, H. (2020). Multiplex spanten als een sociale legpuzzel- Future Africa. Het Houtblad Feb 2020 Issue 32 number 1\_Pg-Cover, Pg 6-13 (online magazine)
- Unknown Author. 2020. Coertse Waterfall. Visi Kitchens, 2020-2021, p.42-43 (magazine)
- Unknown Author. 2020. Future Africa. Visi Kitchens, 2020-2021, p.50 (magazine)
- van der Lugt, P. 2020. Tomorrow's Timber, PEFC Edition, Material District. Future Africa Campus. (book)
- Scholder, N. 2020. Starke Projekte für den urbanen Raum - Future Africa. Bauwelt 23.2020 12 November 2020, p.19 (magazine)
- 2019: De Beer, D. (2019). Campus Creative - Future Africa. Visi Issue 105 Dec 2019 - Jan2020: pg 159 (magazine)
- Hardisty, M. (2019). Growing Green - House Dreyer. Positive Impact Issue 4.0 2019: 00pg 84-92(magazine)
- Visser, A. (2019). Just Add Water - House Dreyer. Earthworks Issue 47 July-Sept 2019: pg 106-111 (magazine)
- Wood, G. (2019). Work of Craft - Earthworld Architects. Visi Iconic 100th Edition Feb-Mar 2019: pg 322 (magazine)
- Prof. Barker, A. (2019). Braam de Villiers and André Eksteen. Boukunde 75th Anniversary 2019: pg 200-203 (Book)
- Prof. Barker, A. (2019). 21st Century Makers. ArchSa Issue 95 Jan-Feb 2019: pg 22-31 (magazine)
- Unknown Author. 2019. Schools\_ Universities\_Facilities - Future Africa. Prolandscaper, December 2019, Coffee Table Edt., p.124-129
- 2018: Author Unknown (2017) Stortemelk Hydropower Plant - Construction World Dec 2018: Pg 1,11,62 (magazine)
- Author Unknown (2018). Eco Crafted - House Nieuwenhuys. Habitat July-August 2018: pg Cover, 62-68 (magazine)
- Earthworld Architects (2018). Earthworld Architects and Interiors Advert. Habitat July-August 2018 (magazine)
- Universal Plywoods (2018). Wood for Thought - Future Africa. Timber IQ June-July 2018: pg Cover, 12-14(magazine)
- Van der Berg, C. (2018). Leader of the pack - Trailwolf Cycles. Earthworks Issue 42 April-June 2018: pg 074-081(magazine)
- Author Unknown (2018). Earthworld Architects and Interiors Projects. Digest of SA Architecture vol 23: pg 188-189 (magazine)
- Earthworld Architects (2018). Earthworld Architects and Interiors Eksteen, A. (2018). The role of digital design and manufacture in redefining current value chains and contractual environment. Wood conference 8th, p. 016 (magazine)
- 2017: Author Unknown (2017) Stortemelk Hydropower Plant - Civil Engineering SAICE Award finalists vol 25 No11 - Dec 2017: Pg 21(magazine)
- Houyoux, N. (2017) Stortemelk Hydropower Plant - Abstract vol 57, Nov 2017: Pg 34-39
- Randall, V. (2017). Tribeca Central Facotry. Digest of SA Architecture vol 22: pg 112-113 (magazine)
- Van Wyk, P, Olivier, A. (2017). Stortemelk Hydropower Plant. Digest of SA Architecture vol 22: pg 48-49 (magazine)
- Venfer, D. (2017). House Mouton - Bushveld Retreat. Garden and Home SA May 2017: pg 18-19 (magazine)
- 2016: Author Unknown 2016. 2015/2016 AfriSam-SAIA Award for Sustainable Architecture and Innovation - I'CAT. Timber IQ, Aug-Sept 2016, p.38-39 (Magazine)
- Confeh, J.L. (2016). HOUSE MOUTON. OGOJIII, A. Cycle 04&05/2016: Issue 7: pg 76 (Magazine)
- Author Unknou. 2016. House Van Dyk. DIGEST of SA Architecture vol 21, 2016, p.164-165
- Proyectos. (2016). CASA GAUCHE SUDAFRICA. OBRA (Argentina), 3: 35: June 2016: pg 56-64 (Magazine)
- Morollo, M.K. (2016). Soul of Sustainability. PERSPECTIVE, INSPIRING ARCHITECTURE & DESIGN (Hong-Kong), Issue 04 April 2016: pg 70-74 (Magazine)
- Dimmer, K. (2016). Pillars of Excellence. EARTHWORKS, Issue 30: Feb+March 2016: pg 25-33 (Magazine)
- Author unknown. (2016). Walking the talk. LEADING ARCHITECTURE & DESIGN, Feb+March 2016:pg 50 (Magazine)
- Author Unknown (2016). I'CAT. Timber.IQ Aug-Sept 2016: pg 38-39 (Magazine)
- Stehr, M. (2016). 29 because it's a stellar achievement. VISI, Design Issue: pg 178 (Magazine)

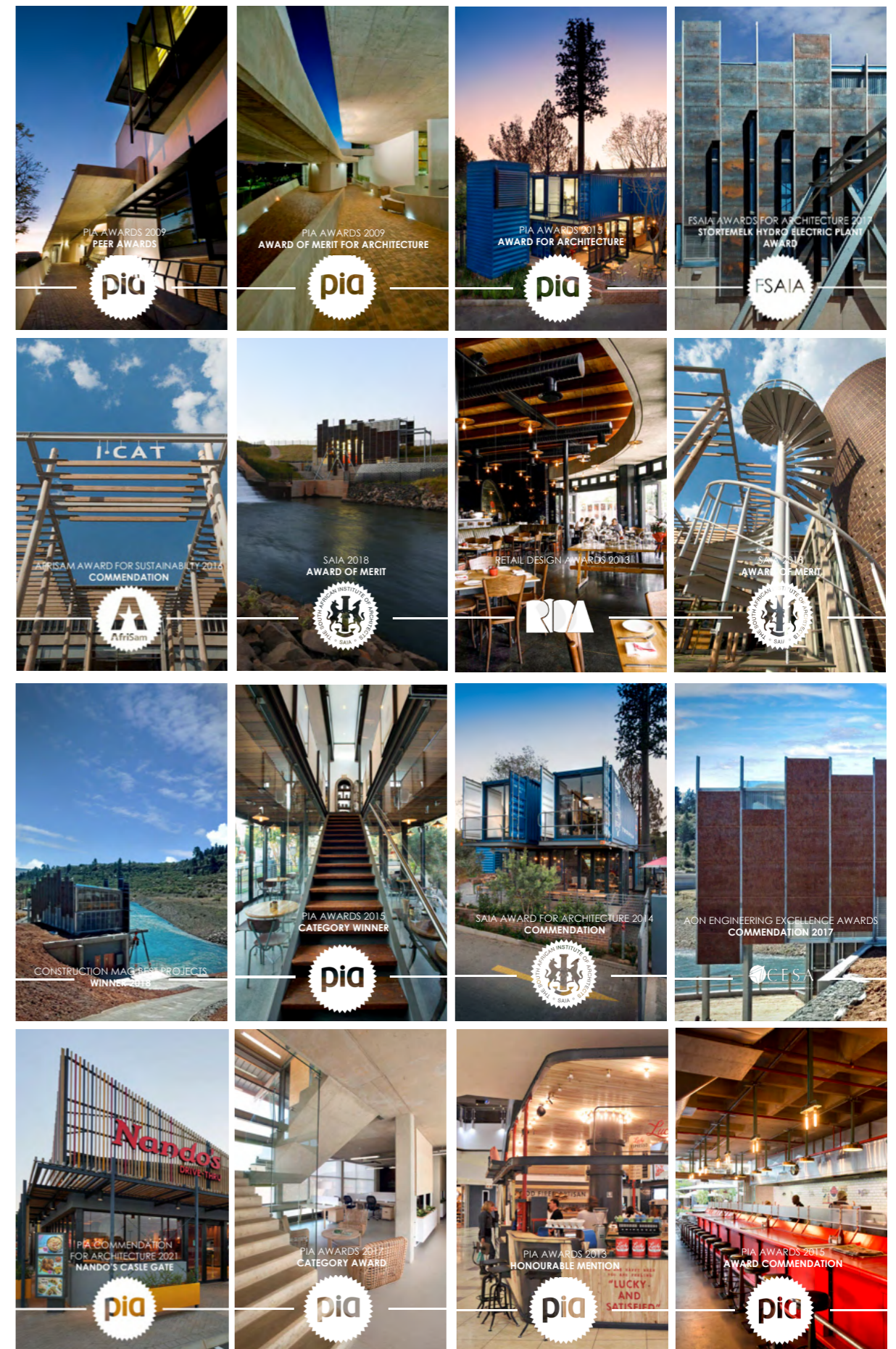
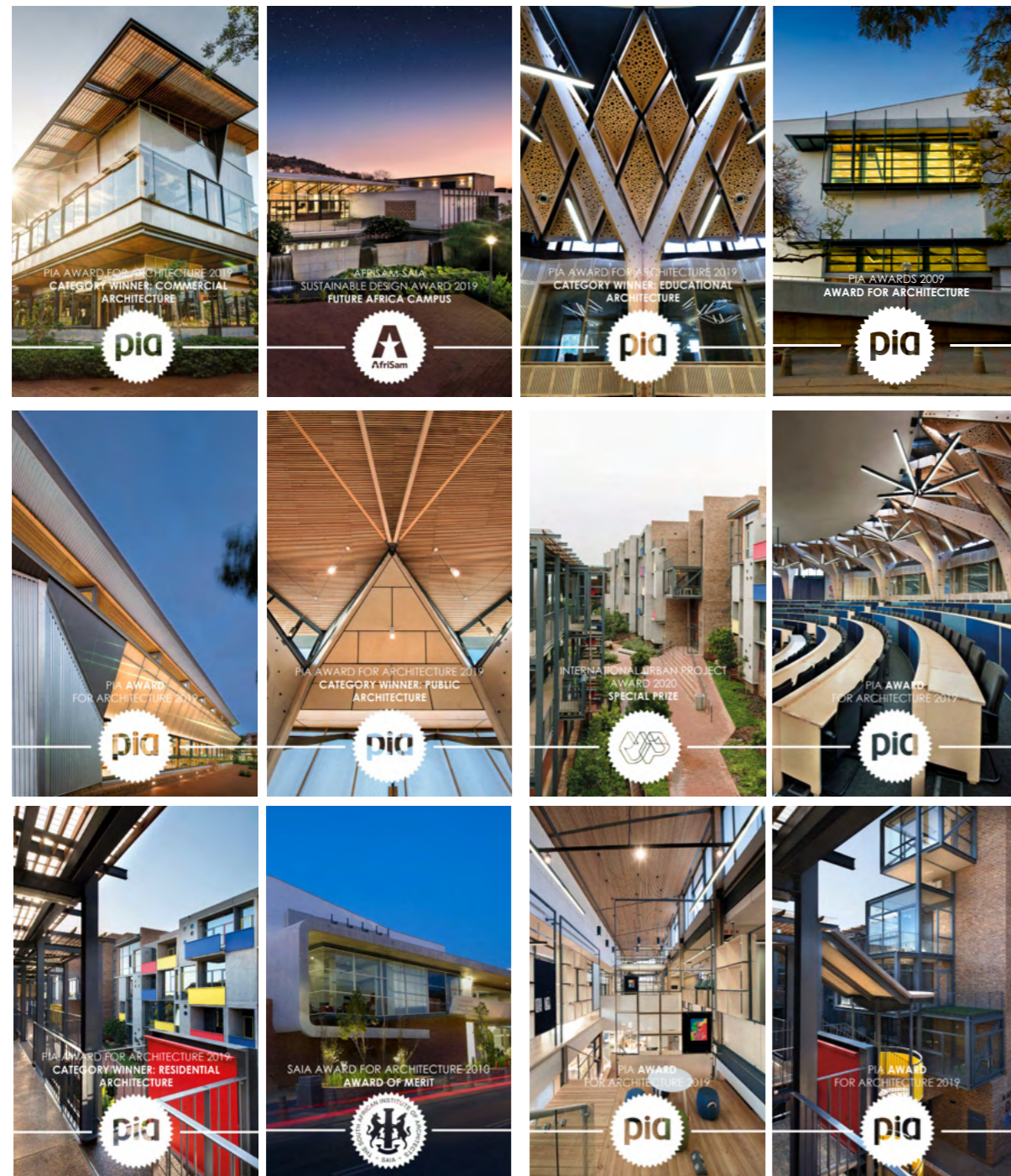
# MAGAZINES, NEWSPAPERS, ARTICLE AND BOOKS

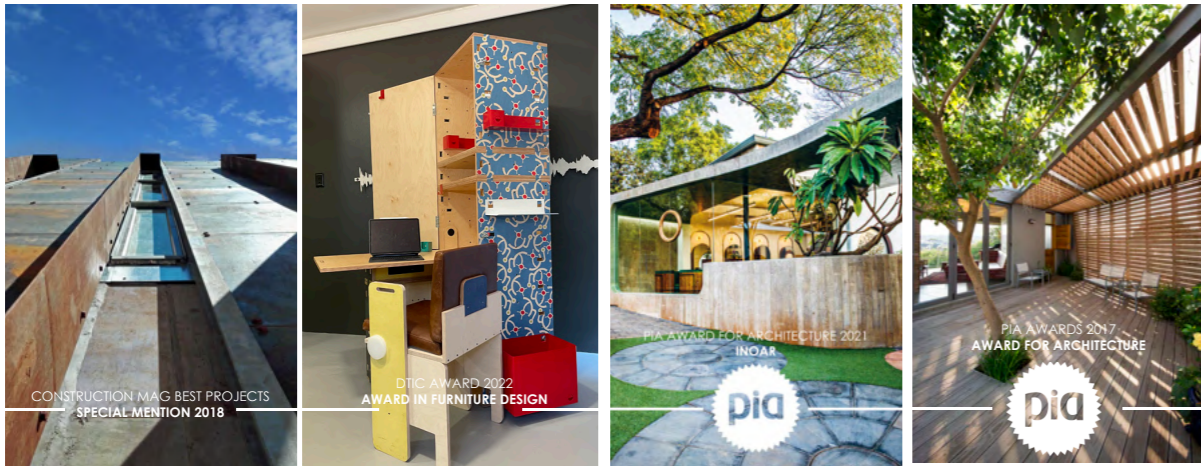
## PUBLICATIONS

- 2015: Greenwood, T. (2015). *Coffee culture*. VISI, No. 79: pg 102-109 (Magazine)  
Author unknown. (2015). *Haute Lumiere 2015. LIGHTING IN DESING*, No. 11-12/15: pg 8-9 (Magazine)
- 2014: De Villiers, B. (2014). *Foghound Interactive, Coffee Shop and Showroom*. DIGEST South African Architecture, Vol 19: pg 218-219. (Magazine)  
Eksteen, A. (2014). *House Izeboud, Lynnwood, Pretoria, Gauteng*. DIGEST South African Architecture, Vol 20: pg 202-203. (Magazine)  
De Villiers, B. (2014). *House Mouton, Pretoria, Gauteng*. DIGEST South African Architecture, Vol 19: pg 30-31. (Magazine)  
Botha, R. (2014). *I-Cat Offices and Warehouse, N4 Gateway Park, Pretoria, Gauteng*. DIGEST South African Architecture, Vol 20: pg 136-137. (Magazine)  
De Lange, A. (2014). *Raw Sophistication*. VISI, No. 74: pg 82-89 (Magazine)  
Author Unknown. (2014). *TALKING RETAIL DESING TRENDS, SHOPPINGSA*. Edition 132, August 2014:pg 34-36 (Magazine)
- 2013: Boonen, S. (2013). *HOUSE JOUBERT*. VOLKSKRANT MAGAZINE: pg 42-46 (Magazine)  
Eksteen, A. (2013). *House Gauche, Silver Lakes Golf Estate, Pretoria, Gauteng*. DIGEST South African Architecture, Vol 18: pg 138-139. (Magazine)
- 2012: *Inside Home Page - Int. Web News Letter - House Joubert -Partyhouse Pretoria - 2013* (Web page)  
Property Magazine, September 2012, page 9, Gisela Nel, *Hot Space\_It's All about Attitude* (Magazine)  
Trapido, A. (2011). *Move over Manhattan*. TASTEMAG, pg 92-97. (Magazine)
- 2011: *Dickinson Park Development - Projects Magazine, Issue 04/08, 2011, page 27* (Magazine)  
*Architectural Digest 2011* (Magazine)  
*Contemporary Capital 2011. Alpine Attitude Hotel: pg 118* (Book)  
*Contemporary Capital 2011. House*
- 2010: *Coetzer: pg 198-199* (Book)  
*Contemporary Capital 2011. Rejuve-A-Nation Project: pg 88-89* (Book)  
De Villiers, B. *TECHNOLOGY IN ARCHITECTURE. Bioclimatic design for energy-efficient buildings*. October/ November 2011: Vol. 1 no. 7 pg 34 – 38 (Magazine)  
Boruvka, N. *TOP BILLING. Power House*. November 2011: pg 68 – 70 (Magazine)
- 2009: *Inside Home Page - Int. Web News Letter - Alpine attitude - 2010* (Web page)  
*Inside Home Page - Int. Web News Letter - House Bodard - East meets South - 2009,2010* (Web page)  
Author unknown. 2010. *Fokus of Alternatiewe Energie - Eis meer terug van Eskom as son jou water tuis verhit - van Dijk*. Rapport, 20 January 2010, pg unknown (Newspaper article)  
Author unknown. 2010. *University of Pretoria adds more lecture halls at its main campus*. Construction News magazine, Volume 1 no. 7, p.13-14. (Journal)  
De Beer, D. 2010. *Architects honour top city sculptor*. Pretoria News, 8 June, p.5 (Newspaper article)
- 2009: Schriemer, R. (2009). *RESIDENCE MAGAZINE*, NI 0309: pg 26-31 (Magazine)  
Pappyn, D. (2009). *BELGIUM Magazine. WAWW What A Wonderful World*, October 2009: p.45 (Magazine)  
Roux, T. 2009. *CENTENARY BUILDING, UNIVERSITY OF PRETORIA. ARCHITECTURE SOUTH AFRICA*, November-December 2009, p.36-41 (Magazine)  
Dodd, A. 2009. *Concrete Dream - House Joubert. Elle Decoration, no.62, Kitchens Issue 2009*, p.84-91 (Magazine)  
*Bioclimatic Design for Energy-efficient buildings - van Dijk House. Walls & Roofs in Africa, vol.10.6, September 2009, p.24-25* (Magazine)  
Joubert, O. 2009. *Centenary Building, University of Pretoria. DIGEST of South African Architecture, Vol 14, p.26-27*. (Magazine)  
Joubert, O. 2009. *Centenary Building 2008. In 10 Years + 100 buildings, Architecture in a Democratic South Africa*. Edited by Joubert, O. Capetown, Bell-Roberts Publishing. (Book)  
Leyden, M. 2009. *Container living - Earthworld Architects. VISI supplementary edition 2009* (Journal)  
Van Rooyen, M (Editor). (2009). *Feature: energy efficiency. WALLS & ROOFS IN AFRICA, Vol 10.6 September 2009: pg 24-25* (Magazine)  
Viviers, A. 2009. *Concrete - Liquid stone with Soul. VISI, the 2009 concrete supplement* (Distributed with VISI 44) (Journal)  
Myburgh Chemaly, J. (2009). *Amazing Space Hip Hotel - Alpine Attitude*. VISI, No. 41: pg 124-133 (Magazine)
- 2007: Winter, J. 2007. *FUSION EVOLUTION - Bodard House. ELLE DECORATION, no.49, Winter issue 2007, p.84-91* (Magazine)  
Author unknown. 2007. *Stem groen - Huis van Dijk. Beeld Plus 1 August 2007, p.6* (Newspaper article)  
Govender, S. 2007. *Tuks expands exponentially - Centenary Building. Pretoria News, 18 April 2007, p.7* (Newspaper article)
- 2005: Author Unknown. 2005. *THE WORLD WE CREATED, Urban lung breathes new life into the community - Dorothy Nyember Par. Built, January-February 2005, p.27-29* (Magazine)  
Pretorius, R (Ed.) 2005. *SOUTH AFRICAN ARCHITECTS SHOW THEIR STEEL - Beukes House. STEEL CONSTRUCTION, vol. 29, No.3, June 2005, p.19* (Magazine)
- 2003: Polack, J. 2003. *Ultimate Comfort - House van der Walt. SOUTH AFRICAN HOME OWNER, Vol.14 No.1, January/ February 2003, p.61-65* (Magazine)  
Venter, I. 2003. *Leef Meer, NOOI DIE VREDE IN - Braam de Villiers. INSIG, No.182, May 2003, p.74* (Magazine)  
Polack, J. (Jan/Feb 2003) *Ultimate Comfort*. S.A Home Owner, 66. Johannesburg, Johnic Publishing Ltd. (Magazine)  
Schaum-Sebring, I. 2003. *Gestroop van tierlantynthjies. Bylae tot Beeld 26 February 2003, p.1, p.4* (Newspaper article)  
Smuts, C. 2003. *GEOMETRIE VIR DIE GEES - Huis Visser. Bylae tot Rapport, 2 February, p.3-4* (Newspaper article)  
Schaum Sebring, I. (2003) *Pondok to Paleis. Beeld, 26 February 2003*. Johannesburg, Naspers. (Newspaper article)
- 2002: De Beer, P. (Jan/Feb 2002) *House Coetzer Mooikloof, Pretoria. Natural Earthbound expression*. S.A. Architect. Randburg, Primedia Publishing. (Magazine)
- 1991: Nutall, J (Editor). (1991). *The M & R Des Baker awards. Planning, No. 117: pg 36*

# OUR ACHIEVEMENTS

## AWARDS





THIS IS US  
THE TEAM



André



Braam



Lise



Lizzy



Madelaine



Cynthia



Petri



Melissa



André



Twané



Andrea



Jethro



Ruben





**Pretoria Office**  
+27(0)12 346 5400  
177 Umkomaas Road  
Ashlea Gardens

**Cape Town Office**  
+27 (0)76 282 0106  
10 Van Ryneveld Street  
Strand

“ ON THE MAKING  
OF MEANINGFUL  
THINGS ”



[www.ewarch.co.za](http://www.ewarch.co.za)